

Tweatt

RED ANGUS



Annual
Bull Sale

Tuesday, February 6, 2018

1 p.m. • At the Ranch • McHenry, ND
9 miles N. of McHenry, 2 miles E. and 1/2 mile N.

DVAuction Broadcasting
Real-time Auctions



Welcome Cattlemen,

We would like to welcome you to our annual production sale. This year has been a challenging year for many. From the raging wildfires to the severe drought we have had to make tough management decisions in times of crisis. We can only pray that 2018 will bring lots of moisture to the area to relieve a lot of these drought stressed areas.

On a much more positive note it is exciting to see the cattle market move in a positive direction. Many of us are seeing 2-300 dollars increase in our feeder calves from the previous year. Red Angus heifer calves are still topping the market all over the country. The demand for Red Angus sired calves isn't slowing down. The Red Angus breed is growing at a rapid rate and is now the number two breed in the country.



Sam, Emily, Nora, Brynn & Wyatt Twedt

This is the strongest and deepest set of bulls I have offered. We are putting in about 100 embryos a year now and it is really paying off. You will find many full sibs in this offering. It brings uniformity and consistency to this offering. This is our Herd sire, Bieber Driven's first calf crop. Wow are they impressive. It is also the first calf crop of Bieber Laura 158W. Her bulls are also very impressive. We have been adding genetic pieces to the puzzle to improve our herd and offer you the best genetics this breed has to offer.

All of the bulls in this sale are raised by Twedt Red Angus. We do not have any cooperators. We are a small family run operation. I pride myself in knowing my cow herd very well. Our cows are run in a very strict manner. We cull extensively for feet, udder, disposition, and fertility. There are no excuses.

All of the bulls in the sale have been DNA tested and carcass ultra-sounded which will be provided the day of the sale. We strive in trying to provide you with the most data possible to better help you make your genetic selection.

We would like to thank all of our past customers and are excited to meet new ones. We hope to see you all Feb. 6th at the ranch. Stop out anytime to see the bulls before then.

Sam Twedt

Twedt
RED ANGUS

Sam Twedt
2061 95th Ave NE
McHenry, ND 58464
(701) 388-4035 • (701) 262-4768

twedtredangus@hotmail.com • www.twedtredangus.com

DVAuction Broadcasting Real-Time Auctions

Watch and Bid Online at DVAuction.com

Can't make the sale?

We are pleased to bring you real-time Internet bidding and a live broadcast of this sale through DVAuction. To watch or bid online, simply complete the following steps:

- Visit the DVAuction web site at www.dvauction.com
- Click on the "Creat New Account" tab
- Enter a user name, password and your contact information.
- Complete the Banking Information. (If you are only interested in viewing you can skip this section)
- Select your Time Zone, Accept the Terms and Conditions and click "Create Account"
- Complete the process by answering a few questions, selecting your subscription choices
- Click on "Apply for Bidding" in the upper left corner of your screen to select the sales you wish to bid on
- Be sure to include a personal contact at your bank, we will contact them in order to get a credit reference.
- If you would prefer to be approved using your credit card, call (402) 316-5460.
- Please be sure to apply for bidding at least a day in advance of the sale-every effort will be made to process your application in a timely manner.

DVAuction will contact you once you have been approved to bid. We do not provide buyer numbers until you have purchased a lot in the sale, and that number is only usable for that auction. After the sale contact the sale owner or manager to make arrangements for payment and delivery of your online purchases.

Please Note: High speed Internet access (DSL, T-1, or Broadband) is required to be able to bid successfully during the sale. If you have any questions, please contact DVAuction at (402) 316-5460 or email support@dvauction.com.

Proxy Bidding: If you can't access a computer during the sale, you can now place a "proxy bid" through DVAuction. Simply follow the instructions listed above, and as the sale date nears there will be a "Proxy Bidding" link under the sale listing on the main page of DVAuction. You can then place the maximum amount that you'd like to bid, and our system will represent your bid just as if you were there.

Welcome,

Thank you for making plans to attend our fourth annual Angus production sale. We are third-generation ranchers in the heart of North Dakota. We continue to use proven family practices and meticulous management. In addition, we are adding the use of advancements in technology to manage our operation. We have carefully built our herd with traits such as reproductive efficiency, docility and performance, all in moderately framed and sound structured cattle.

This year we are able to provide you with a larger selection of quality embryo calves. Our goal is to continue to offer these carefully chosen genetics, in a more superior set of bulls each year. The embryo calves for 2018's sale include genetics from cows and bulls that prominently demonstrate the characteristics imperative to the foundation of anyone's herd. Additionally, we are utilizing genetics essential for constructing modern day broody and high performing Angus cattle. The combination of these fundamental genetics, allow you as our customers, an advantage, to breed for growth, longevity, and sustainability. We are very excited to see our customers utilizing these Angus genetics and the resulting benefits.

These bulls have been fed a ration of alfalfa, corn silage, corn dry distillers and a complete mineral package. These bulls have been fed to grow and mature but not pushed too hard, in order to promote longevity of the bull. The results allow us to share our success with you. You will be pleased with your investment. At weaning, the bull calves and sale heifers received Vista Once SQ, Vision 7 Somnus, vaccinations and pour-on dewormer. Health papers will be furnished sale date for interstate shipment.

Once again, we are offering open heifers coming from the very top cut of our commercial herd. It was difficult for us to let these females go. They are

daughters out of some of our highest quality cows and they have the genetics to excel in any cow herd. This is a prime opportunity to add quality replacement females for real world cattlemen.

Whether you are a returning customer or a new friend, we appreciate your support in our program and we will continue to work towards supplying you with the genetics that are fundamental in this industry. Please call anytime to schedule a visit to the ranch. We would love to help you find the bulls specific to your needs and females for the foundation of your herd. We sincerely thank you for your business.



Ryan, Meghan, Reid, Lane, Lola and Kimmie Ressler

Ryan and Meghan Ressler

Ryan & Meghan Ressler
Cooperstown, ND

Ryan • 701-797-7212 • res80@yahoo.com
Meghan • 701-797-7213 • lady_ressler@hotmail.com
www.resslerranch.com



Annual Bull Sale
Tuesday,
February 6, 2018

1 p.m. CST • At the Twedt Ranch • McHenry, ND
2061 95th Ave NE • McHenry, ND 58464

Directions: 9 miles N. of McHenry, 2 miles E. and 1/2 mile N.

Selling:

- 50 Red Angus Yearling Bulls**
- 35 Angus Yearling Bulls**
- 20 Registered Bred Red Angus Heifers**
- 40 Commercial Angus Yearling Purebred Heifers**
- 45 Open Commercial Red Angus Heifers**

AUCTIONEER:

Roger Jacobs.....(406) 698-7686

SALE DAY PHONES:

Ranch(701) 262-4768
Sam Twedt(701) 388-4035
Seth Twedt(701) 330-5394
Ryan Ressler(701) 797-7212
Meghan Ressler(701) 797-7213

REPRESENTATIVES:

Alex Acheson, Farm & Ranch Guide.....(785) 366-1185
Vern Frey, Frey Livestock Sales & Services, Inc.....(701) 721-0344
Scott Ressler, ND Stockmen's Association(701) 391-7310
Jason Frey, Western Ag Reporter.....(701) 300-0845
Gary Fike, Red Angus Association of America(785) 410-2608

VIEW CATALOG AND VIDEOS ONLINE:

twedtredangus.com, resslerranch.com and dvauction.com

Sale Information

SALE ORDER/SUPPLEMENT SHEET

A sale order sheet will be available sale day, along with a supplement sheet with scrotal measurements and adjusted yearling weights. Red Angus bulls and heifers will sell in catalog order.

LUNCH: A complimentary sale day lunch will be served.

INSURANCE:

Bulls that are purchased sale day become the buyers' responsibility as soon as they are sold. We recommend insuring your bulls on sale day if they are staying at the ranch.

TERMS AND CONDITIONS

Terms of the sale are cash. Phone or mail bids are welcome and may be given to the auctioneer or any of the sale representatives. Live bidding will be available online at www.dvauction.com. Please review the below information and register early so you are approved as a bidder in plenty of time before the sale. Each animal will be sold to the highest bidder. Any bidding disputes will be settled by the auctioneer. Any person attending the sale does so at his/her own risk. Neither the owners, no any person connected with this sale assumes any liability, legal or otherwise. Cattle will sell according to the terms and conditions suggested by the Red Angus Association of America and/or American Angus Association.

GUARANTEE

Ressler Angus Ranch/Twedt Red Angus guarantees all bulls selling for \$2,550 or more against breeding injury for the first breeding season. Breeding season is defined as the 90-day period following the first turnout of the bull(s). If a replacement bull is available, he will be provided, or if buyer prefers, credit toward one bull will be given in the following year's sale, less salvage value of the injured bull. Under no circumstance will Ressler Angus Ranch/Twedt Red Angus be liable for more than the net purchase price of any bull. Please notify Ressler Angus Ranch/Twedt Red Angus as soon as possible, should such an injury occur, to make your claim and arrange your return of the injured bull. This guarantee ends the end of the purchase year.

Should the bull die however, he will not be covered by this guarantee. Ressler Angus Ranch/Twedt Red Angus recommends the purchase of the livestock mortality insurance to mitigate this type of loss.

FEEDING AND DELIVERY

Bulls are kept free of charge until April 1. Free delivery is offered in North Dakota or up to 300 miles on bulls (delivery beyond at cost). We will assist in any way possible to get your bull to you.

Leave delivery instructions at settlement time. Delivery on heifers is at buyer's cost.

BREEDING GUARANTEE

All bulls are guaranteed breeders and guaranteed healthy on sale day. All bulls will be semen tested before delivery. Scrotal measurements will be available sale day. Bulls are guaranteed breeders their first breeding season. Pink Eye and Foot Rot shots are available on request at the time they are semen tested.

SEMEN INTEREST:

Ressler Angus Ranch and Twedt Red Angus will retain a one-third semen interest in all bulls sold.

CATTLE VIEWING:

You are welcome to view the bulls at Ressler Angus Ranch in Cooperstown, N.D., any time prior to the sale date. On Monday, February 5, the bulls will be moved to the sale location and sorted into pens for viewing on the day of the sale.

All Twedt Red Angus bulls and heifers will be available for viewing at the sale location and sorted into pens for viewing on the day of the sale.

VIEW AND BID ONLINE:

DVAuction Broadcasting
Real-time Auctions

Live bidding will be available online at www.dvauction.com. Please review the information on the **inside front cover** and **register early so you are approved as a bidder in plenty of time before the sale.**

PROMOTION AND CATALOG DESIGN

Tracey Koester, Cow Camp Promotions(701) 475-2736
cowcampromotions.com • cowcampcatalogs.com

CATALOG PRINTED BY:

United Printing, Bismarck, N.D.(701) 223-0505





BIEBER DRIVEN C540

A BIEBER DRIVEN C540 #3474416

ISOK	BD	BW	WW	WR	Cat.	%
	3/22/15	79	844	ET	1A	100%

BIEBER HARD DRIVE Y120

LACY GOLD BAR 8123
BIEBER LAURA 158W

BIEBER JOAN 309Y

LCOC HIGH NOON A093R
BIEBER JOAN 750Z

HB	GM	CED	BW	WW	YW	M	ME	HPG	CEM	ST	Marb	YG	CW	REA	Fat
111	55	7	-1.5	79	120	18	4	11	5	7	1.02	-0.04	39	0.64	0.02
49%	8%	44%	57%	7%	11%	60%	76%	48%	50%	74%	5%	33%	15%	8%	74%



ROUSE EPITOME A33

B ROUSE EPITOME A33 #1602750

ISOK	BD	BW	WW	WR	Cat.	%
	2/14/13	80	715	112	1A	100%

BECKTON EPIC R397 K

BECKTON EPIC K F075
BECKTON KIT F468 JL

GHR FLOWER T21

GMRA LARAMIE 5110
GHR FLOWER R05

HB	GM	CED	BW	WW	YW	M	ME	HPG	CEM	ST	Marb	YG	CW	REA	Fat
143	56	4	-2.5	66	120	24	0	10	4	12	0.66	0.25	39	0.15	0.07
21%	6%	66%	40%	31%	11%	27%	53%	65%	57%	29%	21%	97%	15%	47%	98%



BIEBER FEDERALIST B543

C BIEBER FEDERALIST B543 #1689751

ISOK	BD	BW	WW	WR	Cat.	%
	3/23/14	73	724	ET	1A	100%

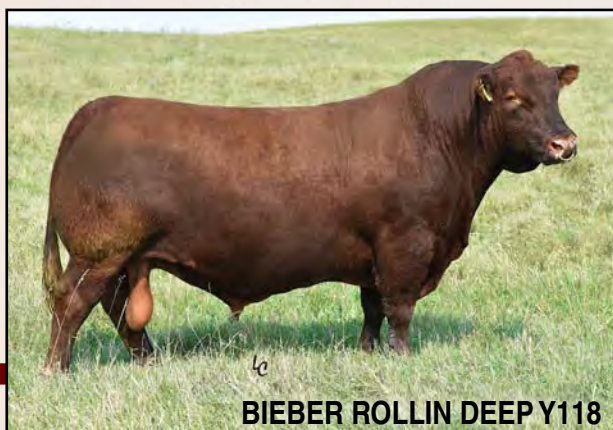
ANDRAS FUSION R236

ANDRAS IN FOCUS B175
ANDRAS BELLE B167

BASIN PRIMROSE 0T43

BASIN TREND SETTER 6074
BASIN PRIMROSE 2043

HB	GM	CED	BW	WW	YW	M	ME	HPG	CEM	ST	Marb	YG	CW	REA	Fat
136	54	6	-0.3	61	94	23	10	11	3	12	1.06	0.04	26	0.09	0.00
25%	13%	47%	72%	44%	47%	31%	97%	52%	71%	27%	4%	59%	42%	55%	51%



BIEBER ROLLIN DEEP Y118

D BIEBER ROLLIN DEEP Y118 #1436844

GGPLD	BD	BW	WW	WR	Cat.	%
	2/10/11	93	647	109	1A	100%

BIEBER ROOSEVELT W384

BIEBER ROUGH RIDER 10712
BIEBER SHEBA 960Z

BIEBER TILLY 399W

BIEBER BOONE 8000
BIEBER TILLY 303S

HB	GM	CED	BW	WW	YW	M	ME	HPG	CEM	ST	Marb	YG	CW	REA	Fat
104	52	4	0.0	75	119	26	-2	13	3	8	0.45	0.18	41	0.25	0.06
56%	29%	61%	75%	12%	13%	17%	38%	30%	73%	67%	44%	92%	12%	34%	95%



BIEBER HARD DRIVE Y120

E BIEBER HARD DRIVE Y120 #1436718
 BD BW WW WR Cat. %
GGPLD 2/11/11 82 644 108 1A 100%

LACY GOLD BAR 8123

CCF GOLD BAR 0251
 LACY MS CHEROKEE 557P

BIEBER LAURA 158W

LJC MISSION STATEMENT P27
 BASIN LAURA 5301

HB	GM	CED	BW	WW	YW	M	ME	HPG	CEM	ST	Marb	YG	CW	REA	Fat
142	57	5	-1.4	87	136	19	-1	13	2	11	0.79	-0.10	48	0.70	-0.01
21%	4%	59%	57%	2%	3%	55%	45%	30%	80%	40%	13%	17%	5%	7%	28%



F CRUMP THE BEAST 5125 #3491982
 BD BW WW WR Cat. %
GGPLD 1/29/15 86 840 130 1A 100%

CRUMP RUNAWAY 3178

CRUMP 300 ULTRA MAGNUM Y106
 BUF CRK PRIMROSE U021

MDM SUSIE 133-9

LJC JAVELIN M08
 MDM SUSIE 91-6

HB	GM	CED	BW	WW	YW	M	ME	HPG	CEM	ST	Marb	YG	CW	REA	Fat
151	54	3	0.0	88	134	17	2	8	6	13	0.66	-0.01	49	0.19	-0.04
10%	4%	68%	76%	1%	1%	62%	62%	88%	33%	10%	13%	38%	1%	29%	4%



BIEBER SPARTACUS A193

G BIEBER SPARTACUS A193 #1617230
 BD BW WW WR Cat. %
ISOK 3/5/13 80 613 100 1A 100%

BIEBER ROUSE SAMURAI X22

LCC CHEYENNE B221L
 GHR MARITA R31

BIEBER TILLY 233U

LCOC HIGH NOON A093R
 BIEBER TILLY 7334

HB	GM	CED	BW	WW	YW	M	ME	HPG	CEM	ST	Marb	YG	CW	REA	Fat
81	51	1	-4.5	69	103	21	2	13	2	7	0.63	0.05	24	0.32	0.04
74%	41%	86%	17%	24%	33%	42%	67%	31%	78%	72%	23%	62%	46%	28%	86%



PIE CINCH 4126

H PIE CINCH 4126 #1725110
 BD BW WW WR Cat. %
GGPLD 3/3/14 73 767 117 1A 100%

LSF SAGA 1040Y

BECKTON EPIC R397 K
 LSF MINOLA T7172 W9041

TKP BONNE BEL 110

HXC CONQUEST 4405P
 TKP BONNE BEL 9031

HB	GM	CED	BW	WW	YW	M	ME	HPG	CEM	ST	Marb	YG	CW	REA	Fat
121	50	3	-2.8	65	113	20	-2	8	3	12	0.10	0.30	34	-0.01	0.08
39%	52%	69%	36%	34%	19%	45%	39%	81%	75%	24%	90%	99%	23%	67%	99%



Lot 1



BIEBER SPARTACUS A193



Lot 1 this summer

1 STRA SPARTACUS 706 #3766583

GGPLD	BD	BW	WW	WR	Cat.	%	Dam's MPPA	Age
	2/10/17	89	780	ET	1A	100%	109.5	7

BIEBER SPARTACUS A193 | BIEBER ROUSE SAMURAI X22
BIEBER TILLY 233U

BIEBER BELGA 345X | BIEBER ROUGH RIDER 10712
OLC BELGA R408

HB	GM	CED	BW	WW	YW	M	ME	HPG	CEM	ST	Marb	YG	CW	REA	Fat
104	50	2	-1.3	64	97	22	0	11	4	10	0.48	0.08	26	0.32	0.05
59%	50%	80%	59%	26%	34%	26%	49%	61%	51%	51%	34%	74%	34%	15%	96%

706 has been a standout since birth. He is super stout, smooth made and is really clean fronted. This bull is a Spartacus son out of a proven donor cow that we purchased from Bieber Red Angus. Belga 345x is a moderate-framed cow with a beautiful udder. This bull travels very well and really stands out in the pen. We are really excited about him and plan to sample him this spring.



BIEBER DRIVEN C540



3K RED CRYSTAL 6228



Lot 2

2 STRA DRIVEN 765

#3766593

GGPLD	BD	BW	WW	WR	Cat.	%	Dam's MPPA	Age
	2/25/17	94	836	ET	1A	100%	104.4	11

BIEBER DRIVEN C540

BIEBER HARD DRIVE Y120
BIEBER JOAN 309Y

3K RED CRYSTAL 6228

LCC CHEYENNE B221L
TELO B001

HB	GM	CED	BW	WW	YW	M	ME	HPG	CEM	ST	Marb	YG	CW	REA	Fat
112	54	4	-1.0	78	119	21	0	13	4	8	0.91	0.07	39	0.30	0.02
49%	5%	62%	63%	3%	4%	31%	49%	19%	60%	75%	3%	73%	6%	17%	81%

765 is the first of two full sibs that have been standouts since birth. 765 is also the first Bieber Driven son to sell. As you walk through the pen of bulls, the Driven sons will stand out. 765 is super deep, thick made with a dark red hair coat. He is out of 3K Crystal 6228 who has done a outstanding job for us. She has a perfect udder and feet. This bull's full sister is probably my favorite heifer in the replacement pen. We feel this bull has a bright future ahead of him.



Lot 3

3 STRA DRIVEN 737

#3766589

GGPLD	BD	BW	WW	WR	Cat.	%	Dam's MPPA	Age
	2/21/17	80	740	ET	2	100%	104.4	11

BIEBER DRIVEN C540

BIEBER HARD DRIVE Y120
BIEBER JOAN 309Y

3K RED CRYSTAL 6228

LCC CHEYENNE B221L
TELO B001

HB	GM	CED	BW	WW	YW	M	ME	HPG	CEM	ST	Marb	YG	CW	REA	Fat
108	52	3	-1.7	73	110	21	0	12	5	9	0.86	0.11	32	0.19	0.03
54%	17%	74%	51%	6%	12%	32%	49%	32%	38%	66%	4%	84%	16%	29%	89%

737 is the more calving-ease version of the two brothers. He is super smooth made and put together very well. Unfortunately, shortly after this flush, we lost Crystal 6228 so this will be the last two sons to sell out of her. Don't miss the opportunity to purchase these genetics. 737 has white in front of the navel so he is registered as a Category 2.



BIEBER ROLLIN DEEP Y118



BIEBER LAURA 158W



BIEBER DEEP END B597, full sib



STRA LAURA 707, full sib



Lot 4

4 STRA ROLLING DEEP 725 #3766567

GGPLD	BD	BW	WW	WR	Cat.	%	Dam's MPPA	Age
	2/19/17	94	730	ET	1A	100%	111.6	8

BIEBER ROLLIN DEEP Y118

BIEBER ROOSEVELT W384
BIEBER TILLY 399W

BIEBER LAURA 158W

LJC MISSION STATEMENT P27
BASIN LAURA 5301

HB	GM	CED	BW	WW	YW	M	ME	HPG	CEM	ST	Marb	YG	CW	REA	Fat
120	51	6	-0.9	69	106	22	0	14	4	10	0.54	0.05	32	0.50	0.05
39%	25%	43%	66%	14%	17%	22%	49%	10%	63%	57%	25%	65%	17%	4%	97%

725 is the first of another set of full brothers to sell – the first of the Laura 158W sons. We purchased Laura in Denver two years ago from Biebers for \$30,000. We added her as a genetic piece to advance our program. She has not disappointed. Laura is the dam of Bieber Hard Drive, Bieber Deep End and Bieber Gladiator. She is a herd bull making machine. 725 and 701 are full sibs to Bieber Deep End. 725 is a moderate-framed, super soggy and deep-made bull.



Lot 5

5 STRA ROLLING DEEP 701 #3766559

GGPLD	BD	BW	WW	WR	Cat.	%	Dam's MPPA	Age
	2/4/17	87	670	ET	1A	100%	111.6	8

BIEBER ROLLIN DEEP Y118

BIEBER ROOSEVELT W384
BIEBER TILLY 399W

BIEBER LAURA 158W

LJC MISSION STATEMENT P27
BASIN LAURA 5301

HB	GM	CED	BW	WW	YW	M	ME	HPG	CEM	ST	Marb	YG	CW	REA	Fat
115	55	6	0.8	76	124	22	0	16	4	7	0.65	-0.04	45	0.85	0.04
45%	2%	51%	89%	4%	3%	21%	49%	4%	50%	87%	14%	23%	2%	1%	92%

701 is the other brother and not a step behind at all. I don't know which one I would pick over the other. They are both very good. 701 as a baby calf had some constipation issues starting out and had a poor recip cow which hindered his weaning weight. He has turned it on since weaning and has caught up with the rest of the bulls now. Don't overlook him because his weaning weight was a little lighter. The disposition on the Laura bulls is second to none and will add docility to your herd. Nothing startles them.



Lot 6

6 STRA SPARTACUS 713 #3766569

BD	BW	WW	WR	Cat.	%	Dam's MPPA	Age
GGPLD 2/13/17	80	895	ET	1A	100%	111.6	8

BIEBER SPARTACUS A193

BIEBER ROUSE SAMURAI X22
BIEBER TILLY 233U

BIEBER LAURA 158W

LJC MISSION STATEMENT P27
BASIN LAURA 5301

HB	GM	CED	BW	WW	YW	M	ME	HPG	CEM	ST	Marb	YG	CW	REA	Fat
119	54	2	-2.2	74	118	20	0	12	4	10	0.65	0.00	37	0.74	0.05
40%	5%	80%	41%	5%	5%	47%	49%	45%	58%	53%	14%	38%	8%	1%	97%

713 is a TANK. He is a bull that will calve easy and flat out put pounds on your next calf crop. He has more middle and depth of rib than I have ever seen a bull. He came out at 80 pounds and weaned off at 895. That's tough to beat. His is also out of Laura 158W. He is a full sib to Bieber Gladiator owned by VF Red Angus in Oregon. This bull will inject growth into anyone's herd.



Lot 6, pictured this summer



Lot 7

7 STRA DRIVEN 7103 #3766315

BD	BW	WW	WR	Cat.	%	Dam's MPPA	Age
GGPLD 3/9/17	92	793		1A	100%	100.0	8

BIEBER DRIVEN C540

BIEBER HARD DRIVE Y120
BIEBER JOAN 309Y

BIEBER PRIMROSE 107W

BASIN HOBO 0545
BASIN PRIMROSE 24T9

HB	GM	CED	BW	WW	YW	M	ME	HPG	CEM	ST	Marb	YG	CW	REA	Fat
162	54	8	-2.4	73	110	22	0	8	3	15	0.88	0.06	32	0.51	0.06
6%	7%	33%	39%	6%	12%	21%	49%	83%	93%	3%	3%	69%	18%	4%	98%

7103 is a super deep, correct-made bull. He is out of our Primrose cow that has been a female-producing machine for us for many years. Her daughters just don't miss so we started flushing her and haven't been disappointed yet. It would be tough to find a bull with a more complete EPD profile. Most of his traits rank in the top 20% in the breed. 7103 was raised at Bovagen where his dam was being flushed, so therefore he has no ratios.



Lot 8

8 STRA CINCH 763 #3766459

BD	BW	WW	WR	Cat.	%	Dam's MPPA	Age
GGPLD 2/24/17	82	834	109	1A	100%	103.6	2

PIE CINCH 4126

LSF SAGA 1040Y
TKP BONNE BEL 110

VRRA ADELLE C04

ANDRAS NEW DIRECTION R240
VRRA ADELLE T32

HB	GM	CED	BW	WW	YW	M	ME	HPG	CEM	ST	Marb	YG	CW	REA	Fat
96	50	1	-1.5	65	108	19	0	9	1	10	0.28	0.19	32	0.10	0.05
69%	42%	92%	54%	23%	14%	54%	49%	83%	93%	53%	75%	97%	16%	44%	97%

763 is the only Cinch son in the sale but boy is he a darn good one. He is super dark red and has a wicked rear end on him. He was raised by a first-calf heifer that we purchased from Valnes Red Angus. She is a beautiful Andras New Direction daughter. She weaned her first calf off at 834 pounds - he was almost as big as her at weaning. She did a great job her first year.



Lot 9

9 STRA HARD DRIVE 784 #3766351

GGPLD	BD	BW	WW	WR	Cat.	%	Dam's MPPA	Age
	2/28/17	107	911	119	1A	100%	108.7	6

BIEBER HARD DRIVE Y120

LACY GOLD BAR 8123
BIEBER LAURA 158W

STRA MISS TRACKER 141

OHRR TRACKER II 25R-13W
PFFR CHERABEL 227

HB	GM	CED	BW	WW	YW	M	ME	HPG	CEM	ST	Marb	YG	CW	REA	Fat
87	52	-1	2.3	87	133	22	0	15	2	7	0.42	0.07	52	0.25	-0.01
79%	16%	97%	98%	1%	1%	25%	49%	6%	88%	85%	45%	70%	1%	22%	32%

784 is a beast. He is one powerful, large-framed bull. If birth weight doesn't bother you too much, this guy will surely add pounds to your calf crop. This cow brings in the top weaning weight calf every year. He weaned off at 911 lbs., ratioing a 119. He is in the top 1% for WW and YW.



STRA SADIE 741, full sib to Lots 10 & 11



JACOBSON SADIE R5067

10 STRA DRIVEN 772 #3766545

GGPLD	BD	BW	WW	WR	Cat.	%	Dam's MPPA	Age
	2/26/17	103	895	ET	1A	100%	108.5	12

BIEBER DRIVEN C540

BIEBER HARD DRIVE Y120
BIEBER JOAN 309Y

JACOBSON SADIE R5067

GLACIER LOGAN 040
SEEGER RED SADIE 334

HB	GM	CED	BW	WW	YW	M	ME	HPG	CEM	ST	Marb	YG	CW	REA	Fat
92	51	-1	1.7	72	106	24	0	11	5	8	0.63	0.07	35	0.24	0.02
74%	25%	96%	95%	8%	17%	11%	49%	52%	46%	74%	15%	73%	10%	22%	79%

772 is another powerful bull. He is the first of the Sadie R5067 sons to sell. We flushed her once and got eight bulls out of the flush. You will find Sadie sons throughout the whole catalog and they could have all been at the front. They are very good bulls. This one has the most growth of the sons, weaning off at 895 lbs. This is a very impressive bull.



Lot 10

11 STRA DRIVEN 758 #3766539

GGPLD	BD	BW	WW	WR	Cat.	%	Dam's MPPA	Age
	2/24/17	88	766	ET	2	100%	108.5	12

BIEBER DRIVEN C540

BIEBER HARD DRIVE Y120
BIEBER JOAN 309Y

JACOBSON SADIE R5067

GLACIER LOGAN 040
SEEGER RED SADIE 334

HB	GM	CED	BW	WW	YW	M	ME	HPG	CEM	ST	Marb	YG	CW	REA	Fat
120	53	0	0.8	74	114	27	0	10	4	11	0.72	0.04	39	0.55	0.04
38%	7%	94%	89%	5%	8%	3%	49%	64%	53%	34%	9%	57%	6%	3%	94%

758 is another Sadie by Driven with a little more calving ease but still lots of growth. The high-selling bred heifer in our 2017 sale was out of Sadie R5067. The Sadie cow family is known throughout the breed and is a very good one. These will be her last sons to sell. We sold a full sister to him in the ND Red Select Sale in December to Turtle River Cattle Co.



Lot 11



12 STRA SPARTACUS 715

#3766585

GGPLD	BD	BW	WW	WR	Cat.	%	Dam's MPPA	Age
	2/13/17	86	736	ET	1A	100%	108.3	8

BIEBER SPARTACUS A193

BIEBER ROUSE SAMURAI X22
BIEBER TILLY 233U

BIEBER ROSE 153W

LJC MISSION STATEMENT P27
BASIN ROSE 6443

HB	GM	CED	BW	WW	YW	M	ME	HPG	CEM	ST	Marb	YG	CW	REA	Fat
144	51	4	-3.2	65	93	24	0	15	2	14	0.77	-0.07	20	0.61	0.03
15%	30%	68%	25%	24%	43%	12%	49%	6%	88%	6%	7%	17%	52%	2%	91%

715 is a deep-ribbed, fancy-made bull. We didn't get a picture of him but don't overlook him because of it. He is out of a super productive cow family. His dam boasts a 108 MPPA. This bull should work on heifers.



Lot 13

13 STRA DRIVEN 7129

#3766367

GGPLD	BD	BW	WW	WR	Cat.	%	Dam's MPPA	Age
	3/17/17	88	859	112	1A	100%	104.4	5

BIEBER DRIVEN C540

BIEBER HARD DRIVE Y120
BIEBER JOAN 309Y

STRA MISS SAKIC 209

RED SIX MILE SAKIC 832S
BAR R MISS RAMBLER 620

HB	GM	CED	BW	WW	YW	M	ME	HPG	CEM	ST	Marb	YG	CW	REA	Fat
124	49	6	-1.3	65	97	21	0	9	2	13	0.51	0.02	25	0.18	0.00
33%	52%	50%	57%	24%	35%	29%	49%	88%	81%	14%	29%	47%	35%	31%	58%

7129 is a younger bull in the sale but you won't be able to tell in the pen. He was born at 88 lbs and weaned off 859 lbs, ratiing a 112. He is out of a super productive SAKIC dam with an MPPA of 104.



Lot 14

14 STRA DRIVEN 7125

#3766333

GGPLD	BD	BW	WW	WR	Cat.	%	Dam's MPPA	Age
	3/16/17	85	827	108	1A	100%	101.6	7

BIEBER DRIVEN C540

BIEBER HARD DRIVE Y120
BIEBER JOAN 309Y

BIEBER SUPRISE 261X

BECKTON EPIC U368 KM
BIEBER SUPRISE 237S

HB	GM	CED	BW	WW	YW	M	ME	HPG	CEM	ST	Marb	YG	CW	REA	Fat
121	50	9	-3.7	62	93	27	0	9	2	12	0.55	-0.03	20	0.23	0.00
37%	47%	24%	19%	33%	43%	4%	49%	81%	87%	26%	24%	26%	54%	23%	52%

7125 is another outstanding Driven son. He was born light and grew like crazy, weaning off at 827 lbs. 261X gets it done year after year. Her Rollin Deep son last year sold to the Fetting Brothers for \$8,500. With a CED EPD of 9 and BW EPD of -3.6, this guy should work and on heifers and not give up any growth.

15 STRA DRIVEN 7135

#3766353

GGPLD	BD	BW	WW	WR	Cat.	%	Dam's MPPA	Age
	3/18/17	81	788	103	1A	100%	100.8	6

BIEBER DRIVEN C540

BIEBER HARD DRIVE Y120
BIEBER JOAN 309Y

STRA FANCY MAKER 115

BIEBER MAKIN HAY 9913
LARSON TAMARACK 353-170

HB	GM	CED	BW	WW	YW	M	ME	HPG	CEM	ST	Marb	YG	CW	REA	Fat
127	49	11	-4.1	66	99	20	0	10	3	12	0.45	0.08	22	0.12	0.03
30%	63%	13%	14%	20%	31%	38%	49%	67%	75%	23%	38%	74%	45%	40%	87%

7135 is another easy-calving Driven son. He is stout with a lot of depth. Driven really stamps his calves. He ranks in the top 13% percent for CE and 14% for BW. He should work great on heifers.

16 STRA DRIVEN 751

#3766399

GGPLD	BD	BW	WW	WR	Cat.	%	Dam's MPPA	Age
	2/24/17	75	759	99	1B	99.7%	98.0	4

BIEBER DRIVEN C540

BIEBER HARD DRIVE Y120
BIEBER JOAN 309Y

STRA 029 MISS YIELD 308

LSF HIGH YIELD 8088U
RRHR MISS RAMBO 761

HB	GM	CED	BW	WW	YW	M	ME	HPG	CEM	ST	Marb	YG	CW	REA	Fat
89	49	6	-4.9	50	74	22	0	9	2	9	0.85	0.03	7	0.11	0.03
77%	60%	42%	8%	75%	80%	26%	49%	87%	84%	65%	4%	52%	87%	44%	88%

751 is a sure-fire heifer bull. He was born at 75 lbs, and is in the top 6% for BW EEP. He is super dark red and has the Driven look to him. He goes back to one of the most productive cow families in our herd. His dam is a beautiful High Yield daughter.



Lot 17

17 STRA EPITOME 734

#3766441

GGPLD	BD	BW	WW	WR	Cat.	%	Dam's MPPA	Age
	2/20/17	76	761	99	1A	100%	98.9	3

ROUSE EPITOME A33

BECKTON EPIC R397 K
GHR FLOWER T21

STRA PRIMROSE 487

LSF HIGH YIELD 8088U
BIEBER PRIMROSE 107W

HB	GM	CED	BW	WW	YW	M	ME	HPG	CEM	ST	Marb	YG	CW	REA	Fat
175	50	8	-5.3	53	92	22	0	9	5	18	0.44	0.21	17	-0.01	0.07
3%	45%	28%	5%	65%	45%	25%	49%	80%	48%	1%	39%	97%	61%	69%	99%

734 is the first of the Epitome sons to sell and he is a dandy. He is another outstanding heifer bull prospect. He has a CED EPD of 8 and a BW of EPD of -5.3. Your heifers will appreciate him. His dam is a daughter of Bieber Primrose W107 who we are currently flushing.



Lot 18

18 STRA BEAST 770

#3766515

GGPLD	BD	BW	WW	WR	Cat.	%	Dam's MPPA	Age
	2/25/17	79	715	ET	1A	100%	102.9	13

CRUMP THE BEAST 5125

CRUMP RUNAWAY 3178
MDM SUSIE 133-9

HRR COLLEEN 429

GLACIER LOGAN 210
HOLDEN COLLEEN 6024

HB	GM	CED	BW	WW	YW	M	ME	HPG	CEM	ST	Marb	YG	CW	REA	Fat
161	52	2	-0.9	64	93	23	0	13	9	15	0.80	-0.09	24	0.27	-0.02
7%	15%	86%	66%	25%	43%	19%	49%	26%	5%	4%	6%	11%	41%	20%	11%

770 is the first of two full brothers sired by a bull we used out of the Crump program. The Beast added frame and growth to his calves. 770 is also out of Colleen 429. She set our sale on fire last year with her outstanding set of ET sons out of Rollin Deep with the high-selling bull selling to Gill Red Angus for \$14,000.



Lot 19

19 STRA BEAST 798

#3766519

GGPLD	BD	BW	WW	WR	Cat.	%	Dam's MPPA	Age
	3/5/17	92	760	ET	1A	100%	102.9	13

CRUMP THE BEAST 5125

CRUMP RUNAWAY 3178
MDM SUSIE 133-9

HRR COLLEEN 429

GLACIER LOGAN 210
HOLDEN COLLEEN 6024

HB	GM	CED	BW	WW	YW	M	ME	HPG	CEM	ST	Marb	YG	CW	REA	Fat
152	51	0	-0.4	65	93	21	0	13	8	15	0.54	-0.17	24	0.37	-0.04
10%	27%	92%	75%	24%	43%	30%	49%	30%	7%	5%	25%	5%	38%	12%	5%

798 is the other full brother to Lot 18. You will have to decide which one you like better. Both are full of muscle and move very well. A maternal sister sells as the lead-off bred heifer and is a full sib to STRA Trending 618, the high-selling bull in 2017 out of Colleen 429.



20 STRA FEDERALIST 711

#3766573

GGPLD	BD	BW	WW	WR	Cat.	%	Dam's MPPA	Age
	2/12/17	82	703	ET	1A	100%	111.6	8

BIEBER FEDERALIST B543

ANDRAS FUSION R236
BASIN PRIMROSE OT43

BIEBER LAURA 158W

LJC MISSION STATEMENT P27
BASIN LAURA 5301

HB	GM	CED	BW	WW	YW	M	ME	HPG	CEM	ST	Marb	YG	CW	REA	Fat
152	55	7	-0.3	69	112	24	0	13	4	12	0.80	-0.05	36	0.49	0.00
11%	2%	36%	75%	13%	10%	11%	49%	26%	55%	21%	5%	23%	9%	4%	54%

711 is a deep, soggy, easy-calving bull. He is another Laura son out of Bieber Federalist. He stacks two of the most popular cows in the breed, OT43 and 158W. Use this guy and keep every daughter out of him.



21 STRA SPARTACUS 720

#3766587

GGPLD	BD	BW	WW	WR	Cat.	%	Dam's MPPA	Age
	2/16/17	93	802	ET	1A	100%	108.3	8

BIEBER SPARTACUS A193

BIEBER ROUSE SAMURAI X22
BIEBER TILLY 233U

BIEBER ROSE 153W

LJC MISSION STATEMENT P27
BASIN ROSE 6443

HB	GM	CED	BW	WW	YW	M	ME	HPG	CEM	ST	Marb	YG	CW	REA	Fat
135	51	3	-2.2	71	107	20	0	10	2	14	0.52	-0.05	30	0.62	0.03
22%	23%	75%	41%	9%	15%	45%	49%	72%	87%	8%	27%	20%	21%	2%	86%

720 is another outstanding Spartacus son. He has a huge spread from BW to YW. His WW is in the top 6% of the breed and YW is top 8%. He weaned off over 800 lbs and has an outstanding dam with an MPPA of 108. Be sure to find him.



Lot 22

22 STRA DRIVEN 785

#3766549

GGPLD	BD	BW	WW	WR	Cat.	%	Dam's MPPA	Age
	2/28/17	92	800	ET	1A	100%	108.5	12

BIEBER DRIVEN C540

BIEBER HARD DRIVE Y120
BIEBER JOAN 309Y

JACOBSON SADIE R5067

GLACIER LOGAN 040
SEEGER RED SADIE 334

HB	GM	CED	BW	WW	YW	M	ME	HPG	CEM	ST	Marb	YG	CW	REA	Fat
103	51	0	-1.1	63	94	26	0	10	3	11	0.84	0.13	24	0.16	0.05
60%	32%	94%	61%	30%	40%	5%	49%	64%	68%	41%	4%	88%	39%	34%	96%

785 is another great Driven son out of the donor, Sadie R5067. He is dark cherry red with lots of length and thickness. He is one of the easier calving Sadie sons with a BW of -1.1.



Lot 23

23 STRA DRIVEN 750

#3766535

GGPLD	BD	BW	WW	WR	Cat.	%	Dam's MPPA	Age
	2/23/17	83	767	ET	2	100%	108.5	12

BIEBER DRIVEN C540

BIEBER HARD DRIVE Y120
BIEBER JOAN 309Y

JACOBSON SADIE R5067

GLACIER LOGAN 040
SEEGER RED SADIE 334

HB	GM	CED	BW	WW	YW	M	ME	HPG	CEM	ST	Marb	YG	CW	REA	Fat
99	50	-1	-1.1	66	97	26	0	11	4	10	0.57	-0.01	25	0.49	0.03
65%	42%	96%	61%	21%	35%	4%	49%	57%	65%	46%	22%	34%	35%	4%	91%

750 is another Driven out of Sadie. These bulls are tough to fault. They all have a similar look to them that is tough to pass up. The Sadie Driven combination clicked really well and I think the females out of these sons are going to be fantastic.



Lot 24

24 STRA ROLLING DEEP 752

#3766343

GGPLD	BD	BW	WW	WR	Cat.	%	Dam's MPPA	Age
	2/24/17	96	786	102	1A	100%	99.2	6

BIEBER ROLLIN DEEP Y118

BIEBER ROOSEVELT W384
BIEBER TILLY 399W

STRA MISS TRACKER 182

OHR TRACKER II 25R-13W
BAR R CANYON HOOD 607

HB	GM	CED	BW	WW	YW	M	ME	HPG	CEM	ST	Marb	YG	CW	REA	Fat
118	53	1	1.9	83	135	19	4	13	5	9	0.23	0.06	53	0.34	0.00
41%	8%	91%	97%	1%	1%	50%	82%	19%	48%	59%	85%	69%	1%	13%	49%

752 is the first of the AI-born Rollin Deep sons and boy is he a dandy. Wow for growth in this guy. His dam brings one of the top bulls every year. He ranks in the top 1% for WW and top 1% for YW. Plus, he has the phenotype to go with it.



Lot 25

25 STRA ROLLING DEEP 793

#3766403

GGPLD	BD	BW	WW	WR	Cat.	%	Dam's MPPA	Age
	3/2/17	96	769	99	1A	100%	98.7	4

BIEBER ROLLIN DEEP Y118

BIEBER ROOSEVELT W384
BIEBER TILLY 399W

STRA MARJA 355

5L NORSEMAN KING 2291
OHRR RED HAWK MARJA 685-44U

HB	GM	CED	BW	WW	YW	M	ME	HPG	CEM	ST	Marb	YG	CW	REA	Fat
69	51	0	1.1	68	108	20	-1	10	-1	7	0.24	-0.09	36	0.55	-0.01
91%	24%	94%	92%	14%	14%	45%	40%	71%	98%	88%	82%	11%	9%	3%	32%

793 is another dark-red, super deep Rollin Deep son. He is out of a very productive Norseman King daughter. The combination of Rollin Deep and Norseman King should make some excellent females.



Lot 27
is out of
the sale

26 STRA EPITOME 7111

#3766347

GGPLD	BD	BW	WW	WR	Cat.	%	Dam's MPPA	Age
	3/14/17	78	760	99	1A	100%	102.3	6

ROUSE EPITOME A33

BECKTON EPIC R397 K
GHR FLOWER T21

STRA MISS TRACKER 180

OHRR TRACKER II 25R-13W
DAMAR TINA U845

HB	GM	CED	BW	WW	YW	M	ME	HPG	CEM	ST	Marb	YG	CW	REA	Fat
121	48	6	-3.6	60	96	26	0	12	3	12	0.25	0.13	22	0.09	0.04
38%	69%	45%	19%	41%	36%	6%	49%	31%	75%	26%	82%	89%	46%	46%	95%

7111 is a dark cherry red, super thick and deep Epitome son that really stands out. Those of you that have been to this sale before know that my nephews each have a cow that runs at Twedt Red Angus. This is Liam's bull and boy is he a dandy. He came out easy and really packs on the muscle. He would be a great heifer bull prospect.



Lot 28

28 STRA HARD DRIVE 766

#3766507

GGPLD	BD	BW	WW	WR	Cat.	%	Dam's MPPA	Age
	2/25/17	84	830	108	1A	100%	103.2	2

BIEBER HARD DRIVE Y120

LACY GOLD BAR 8123
BIEBER LAURA 158W

STRA HEATHER BLOOM 597

LSF HIGH YIELD 8088U
BIEBER HEATHER BLOOM 172X

HB	GM	CED	BW	WW	YW	M	ME	HPG	CEM	ST	Marb	YG	CW	REA	Fat
144	54	5	0.0	80	125	17	0	13	2	12	0.64	-0.06	44	0.64	0.00
15%	4%	60%	80%	1%	2%	69%	49%	27%	87%	18%	14%	17%	2%	1%	54%

766 is one of the few Hard Drive sons in the sale and boy is he dandy. He is out of a first-calf High Yield heifer and she did a heck of a job on her first calf. Hard Drive x High Yield has been a mating that really has clicked for us. He is one of the top weaning weight bulls in the sale and ranks in the top 1% for WW and 2% YW.



29 STRA ROLLING DEEP 742

#3766401

GGPLD	BD	BW	WW	WR	Cat.	%	Dam's MPPA	Age
	2/22/17	83	791	102	1A	100%	100.0	4

BIEBER ROLLIN DEEP Y118

BIEBER ROOSEVELT W384
BIEBER TILLY 399W

STRA RAMBO LIBRA 340

LSF HIGH YIELD 8088U
RRHR MISS RAMBO 752

HB	GM	CED	BW	WW	YW	M	ME	HPG	CEM	ST	Marb	YG	CW	REA	Fat
118	53	4	-0.1	74	117	20	3	11	5	9	0.40	-0.04	40	0.49	0.00
40%	7%	70%	79%	5%	6%	47%	76%	62%	41%	59%	47%	23%	5%	4%	47%

742 is a Rollin Deep son out of a High Yield daughter. The High Yield daughters are really turning into some very productive cows for us. They have perfect udders and are easy-doing cows. You will find a lot of good bulls in this sale out of High Yield daughters.



Lot 30

30 STRA EPITOME 721

#3766417

GGPLD	BD	BW	WW	WR	Cat.	%	Dam's MPPA	Age
	2/16/17	99	810	106	1A	100%	102.9	4

ROUSE EPITOME A33

BECKTON EPIC R397 K
GHR FLOWER T21

STRA CHERABEL 318

5L NORSEMAN KING 2291
PFFR CHERABEL 227

HB	GM	CED	BW	WW	YW	M	ME	HPG	CEM	ST	Marb	YG	CW	REA	Fat
113	50	0	0.1	67	107	20	0	14	-1	12	0.22	0.08	34	0.30	0.03
47%	43%	94%	82%	18%	16%	38%	49%	18%	99%	23%	86%	77%	13%	17%	90%

721 is a real powerhouse of an Epitome son. On the dam side he goes back to our donor Cherabel 227. His dam is out of Norseman King and is turning into a terrific cow. This bull has a lot of growth weaning off at 810 lbs.



Lot 31

31 STRA HUGHES 7162

#3766599

GGPLD	BD	BW	WW	WR	Cat.	%	Dam's MPPA	Age
	2/26/17	108	753	ET	1A	100%	109.6	13

BIEBER H HUGHES W109

BASIN HOBO 0545
BASIN ROSE 06T0

BAR R MISS RAMBO 71P

FORSTER RAMBO 1061
BAR R MISS GRAND CANYON 023

HB	GM	CED	BW	WW	YW	M	ME	HPG	CEM	ST	Marb	YG	CW	REA	Fat
118	47	1	1.8	75	112	23	0	13	8	12	0.03	0.16	39	0.27	0.05
40%	87%	91%	96%	4%	10%	21%	49%	26%	10%	26%	96%	94%	6%	20%	97%

7162 is a powerhouse of a bull. He is an ET calf out of Rambo 71P. We have sold full sibs to this bull the past two years and many of them being high sellers. This guy is just as good. He is loaded with performance and moves very well. He has a full sister selling in the bred heifers - be sure to look her up.

32 STRA BEAST 775

#3766393

GGPLD	BD	BW	WW	WR	Cat.	%	Dam's MPPA	Age
	2/26/17	98	863	112	1A	100%	102.7	4

CRUMP THE BEAST 5125

CRUMP RUNAWAY 3178
MDM SUSIE 133-9

STRA YODDA 306

BIEBER H HUGHES W109
BIEBER YODDA 10148

HB	GM	CED	BW	WW	YW	M	ME	HPG	CEM	ST	Marb	YG	CW	REA	Fat
144	52	3	1.5	86	126	16	0	6	6	14	0.71	0.14	47	-0.14	-0.02
15%	14%	71%	94%	1%	2%	79%	49%	99%	21%	9%	10%	92%	1%	90%	15%

775 is a large-framed bull. He is out of a very good Bieber Hughes cow that is doing great things for us. This bull has major performance. He weaned off at 863 lbs ratiating a 112 and ranks in the top 1% for WW and top 2% for YW.

33 STRA DRIVEN 764

#3766541

GGPLD	BD	BW	WW	WR	Cat.	%	Dam's MPPA	Age
	2/25/17	101	850	ET	1A	100%	108.5	12

BIEBER DRIVEN C540

BIEBER HARD DRIVE Y120
BIEBER JOAN 309Y

JACOBSON SADIE R5067

GLACIER LOGAN 040
SEEGER RED SADIE 334

HB	GM	CED	BW	WW	YW	M	ME	HPG	CEM	ST	Marb	YG	CW	REA	Fat
98	51	1	0.6	71	105	25	0	10	4	9	0.59	0.05	33	0.35	0.03
67%	29%	88%	87%	9%	18%	8%	49%	71%	50%	65%	19%	65%	14%	12%	88%

764 is another terrific Sadie Driven. We spread the Sadie Driven throughout the catalog but really they all could have went in the front. This guy weaned off at 850 lbs! He will add a little more frame.

34 STRA DRIVEN 757

#3766537

GGPLD	BD	BW	WW	WR	Cat.	%	Dam's MPPA	Age
	2/24/17	94	788	ET	1A	100%	108.5	12

BIEBER DRIVEN C540

BIEBER HARD DRIVE Y120
BIEBER JOAN 309Y

JACOBSON SADIE R5067

GLACIER LOGAN 040
SEEGER RED SADIE 334

HB	GM	CED	BW	WW	YW	M	ME	HPG	CEM	ST	Marb	YG	CW	REA	Fat
81	48	1	0.0	63	91	27	0	8	4	9	0.52	0.03	24	0.30	0.03
83%	67%	92%	79%	28%	48%	3%	49%	93%	65%	66%	28%	52%	41%	16%	88%

757 is another Sadie Driven that really did things well. These bulls will add performance, maternal and carcass to your cow herd. Don't miss out on them.

35 STRA DRIVEN 795

#3766445

GGPLD	BD	BW	WW	WR	Cat.	%	Dam's MPPA	Age
	3/3/17	79	787	103	2	100%	102.9	3

BIEBER DRIVEN C540

BIEBER HARD DRIVE Y120
BIEBER JOAN 309Y

STRA ENCHANTRESS 477

LSF HIGH YIELD 8088U
BIEBER ENCHANTRESS 203X

HB	GM	CED	BW	WW	YW	M	ME	HPG	CEM	ST	Marb	YG	CW	REA	Fat
121	53	9	-3.4	68	105	21	0	11	1	10	0.86	0.03	27	0.31	0.02
37%	9%	25%	22%	16%	19%	37%	49%	57%	92%	49%	4%	52%	29%	15%	84%

795 is another easy-calving Driven son out of a fantastic High Yield daughter. This bull came out at 79 lbs and weaned off at 787. He has a CED of 9 and a BW of -3.4. He should work good on heifers.

36 STRA DRIVEN 7146 #3766371
 BD BW WW WR Cat. % Dam's MPPA Age
 GGPLD 3/22/17 87 764 100 1A 100% 104.4 5

BIEBER DRIVEN C540

BIEBER HARD DRIVE Y120
BIEBER JOAN 309Y

STRA MISS OUTRIDER 228

BIEBER OUTRIDER W388
OHRR RED HAWK MARJA 685-44U

HB	GM	CED	BW	WW	YW	M	ME	HPG	CEM	ST	Marb	YG	CW	REA	Fat
107	50	4	-2.3	62	93	23	0	8	0	12	0.62	0.06	22	0.30	0.04
55%	45%	66%	40%	33%	42%	18%	49%	91%	96%	27%	16%	66%	46%	16%	95%

7146 is deep and easy-fleshing Driven son from a cow that gets the job done every year. Her bulls are always good. This one is a little younger but still keeps up with the older bulls. This guy will calve easy and not give up the growth.

37 STRA EPITOME 7114 #3766425
 BD BW WW WR Cat. % Dam's MPPA Age
 GGPLD 3/14/17 82 741 97 1A 100% 98.0 4

ROUSE EPITOME A33

BECKTON EPIC R397 K
GHR FLOWER T21

STRA SCYNTHIA 384

LSF HIGH YIELD 8088U
BAR MISS CANYON 159

HB	GM	CED	BW	WW	YW	M	ME	HPG	CEM	ST	Marb	YG	CW	REA	Fat
159	50	6	-3.6	55	93	24	0	15	3	15	0.49	0.27	20	-0.05	0.08
7%	45%	46%	19%	58%	43%	13%	49%	6%	69%	3%	31%	99%	52%	75%	99%

7114 is another easy-calving Epitome son. He is super long and thick made. He will work well on heifers.

38 STRA FEDERALIST 7120 #3766479
 BD BW WW WR Cat. % Dam's MPPA Age
 GGPLD 3/15/17 70 716 93 1A 100% 97.2 2

BIEBER FEDERALIST B543

ANDRAS FUSION R236
BASIN PRIMROSE OT43

STRA RACHLE 554

BIEBER HARD DRIVE Y120
STRA RAMBO RACHLE 339

HB	GM	CED	BW	WW	YW	M	ME	HPG	CEM	ST	Marb	YG	CW	REA	Fat
137	52	9	-3.4	54	86	24	0	13	1	12	0.83	0.05	17	-0.02	0.01
20%	15%	24%	23%	64%	58%	13%	49%	30%	89%	20%	5%	61%	64%	71%	60%

7120 is a dark cherry Federalist son that is super thick and deep. He is out of one of the first Hard Drive daughters we have calved. She had lots of milk and a beautiful udder. This guy should work well on heifers.

39 STRA EPITOME 7118 #3766397
 BD BW WW WR Cat. % Dam's MPPA Age
 GGPLD 3/15/17 83 738 96 1A 100% 99.3 4

ROUSE EPITOME A33

BECKTON EPIC R397 K
GHR FLOWER T21

STRA RAMBO RACHLE 339

LJC MISSION STATEMENT P27
RRHR MISS RAMBO 717

HB	GM	CED	BW	WW	YW	M	ME	HPG	CEM	ST	Marb	YG	CW	REA	Fat
131	51	5	-3.0	55	95	22	0	14	2	12	0.23	-0.01	23	0.39	0.02
26%	32%	57%	27%	59%	38%	25%	49%	16%	84%	19%	83%	34%	44%	10%	85%

7118 is a dark cherry red Epitome son. He is out of a really good Mission Statement daughter. He is on the fence as far as being a good heifer bull but will for sure calve easy on cows.

40 STRA DRIVEN 761 #3766303
 BD BW WW WR Cat. % Dam's MPPA Age
 GGPLD 2/24/17 87 766 100 1B 99.5% 106.0 11

BIEBER DRIVEN C540

BIEBER HARD DRIVE Y120
BIEBER JOAN 309Y

BAR R MISS DATA 617

SHOCO DATA
BAR R MISS G.CANYON 029

HB	GM	CED	BW	WW	YW	M	ME	HPG	CEM	ST	Marb	YG	CW	REA	Fat
92	49	3	-1.4	64	90	25	0	11	2	9	0.78	0.08	21	0.05	0.02
74%	56%	78%	57%	27%	49%	9%	49%	54%	83%	59%	6%	74%	49%	54%	79%

761 is a super thick and deep Driven son out of 617. She will be 11 years old and has raised some of the top bulls in the sale for years. She stuck AI again this year. This bull's grandmother stayed in the herd and stuck AI her last three years before she was sold at age 14. Longevity runs deep in this cow family.

41 STRA DRIVEN 767 #3766543
 BD BW WW WR Cat. % Dam's MPPA Age
 GGPLD 2/25/17 93 798 ET 1A 100% 108.5 12

BIEBER DRIVEN C540

BIEBER HARD DRIVE Y120
BIEBER JOAN 309Y

JACOBSON SADIE R5067

GLACIER LOGAN 040
SEEGER RED SADIE 334

HB	GM	CED	BW	WW	YW	M	ME	HPG	CEM	ST	Marb	YG	CW	REA	Fat
92	51	1	-0.2	65	94	26	0	7	4	10	0.77	0.03	25	0.30	0.03
74%	34%	91%	78%	24%	41%	5%	49%	98%	57%	56%	7%	56%	35%	16%	86%

767 is another really good Sadie Driven son that weaned off at almost 800 lbs. These bulls will make a difference in your herd.

42 STRA HUGHES 7160 #3766595
 BD BW WW WR Cat. % Dam's MPPA Age
 2/21/17 96 717 ET 1A 100% 109.6 13

BIEBER H HUGHES W109

BASIN HOBO 0545
BASIN ROSE 06T0

BAR R MISS RAMBO 71P

FORSTER RAMBO 1061
BAR R MISS GRAND CANYON 023

HB	GM	CED	BW	WW	YW	M	ME	HPG	CEM	ST	Marb	YG	CW	REA	Fat
115	47	2	-0.3	65	96	25	0	14	9	11	0.33	0.15	27	0.00	0.03
45%	86%	83%	76%	23%	35%	7%	0%	13%	6%	38%	64%	93%	31%	66%	91%

7160 is another Bieber Hughes son out of Rambo 71P. The Rambo 71P sons have been outstanding and are turning into some great bulls.

43 STRA DRIVEN 7136 #3766345
 BD BW WW WR Cat. % Dam's MPPA Age
 GGPLD 3/18/17 98 792 103 1A 100% 102.3 6

BIEBER DRIVEN C540

BIEBER HARD DRIVE Y120
BIEBER JOAN 309Y

STRA VALUE STATEMENT 129

LJC MISSION STATEMENT P27
RRHR MISS TOP VALUE 762

HB	GM	CED	BW	WW	YW	M	ME	HPG	CEM	ST	Marb	YG	CW	REA	Fat
96	53	0	0.8	76	118	15	0	10	-1	10	0.64	-0.04	41	0.48	0.00
69%	8%	94%	90%	3%	5%	82%	49%	71%	99%	57%	15%	26%	4%	4%	44%

7136 is another deep-ribbed, soggy Driven son that really stacks the performance. He is a younger calf but still just as powerful. He weaned off just under 800 lbs. This guy is a sleeper in this sale be sure to find him.

44 STRA HARD DRIVE 726 #3766421
 BD BW WW WR Cat. % Dam's MPPA Age
 GGPLD 2/19/17 95 730 95 1A 100% 98.0 4

BIEBER HARD DRIVE Y120

LACY GOLD BAR 8123
BIEBER LAURA 158W

STRA REBALAS

LSF HIGH YIELD 8088U
GLACIER REBALAS 485

HB	GM	CED	BW	WW	YW	M	ME	HPG	CEM	ST	Marb	YG	CW	REA	Fat
154	53	4	-0.1	71	109	16	0	13	3	14	0.60	-0.08	35	0.17	-0.05
10%	7%	70%	79%	9%	13%	78%	49%	26%	71%	7%	18%	13%	11%	31%	4%

726 is the last Hard Drive to sell. Hard Drive no longer produces semen and his sons are tough to beat. Don't miss the chance to buy one of his sons before it's too late. He is out of a great High Yield daughter.

45 STRA EPITOME 781 #3766365
 BD BW WW WR Cat. % Dam's MPPA Age
 GGPLD 2/27/17 77 612 90 1A 100% 100.7 5

ROUSE EPITOME A33

BECKTON EPIC R397 K
GHR FLOWER T21

STRA MISS SAKIC 242

RED SIX MILE SAKIC 832S
BAR R NISS SWEETNESS 657

HB	GM	CED	BW	WW	YW	M	ME	HPG	CEM	ST	Marb	YG	CW	REA	Fat
115	47	4	-2.9	52	80	25	0	13	5	11	0.19	0.18	13	-0.15	0.05
45%	87%	69%	30%	71%	71%	7%	49%	26%	39%	28%	88%	96%	73%	90%	96%

781 is a moderate-framed, easy-fleshing Epitome son. He is out of really good SAKIC daughter that is doing a great job for us. He will work on heifers.

46 STRA FEDERALIST 749 #3766491
 BD BW WW WR Cat. % Dam's MPPA Age
 GGPLD 2/23/17 80 673 88 1A 100% 95.2 2

BIEBER FEDERALIST B543

ANDRAS FUSION R236
BASIN PRIMROSE OT43

STRA MISS RAMBO 528 ET

BIEBER H HUGHES W109
BAR R MISS RAMBO 71P

HB	GM	CED	BW	WW	YW	M	ME	HPG	CEM	ST	Marb	YG	CW	REA	Fat
121	47	6	-1.3	51	71	25	0	12	6	12	0.58	0.12	10	-0.13	0.03
37%	86%	50%	57%	73%	84%	9%	49%	38%	24%	21%	20%	86%	81%	89%	88%

749 is the last Federalist son in the sale. Federalist is known for his low BW and easy fleshing. His daughters are going to be fantastic cows. He will work on heifers.

47 STRA EPITOME 799 #3766433
 BD BW WW WR Cat. % Dam's MPPA Age
 GGPLD 3/6/17 83 711 93 1B 99.6% 94.3 3

ROUSE EPITOME A33

BECKTON EPIC R397 K
GHR FLOWER T21

STRA MARIAS 419

BIEBER H HUGHES W109
BAR R MISS MAYOR LEAGUE 521

HB	GM	CED	BW	WW	YW	M	ME	HPG	CEM	ST	Marb	YG	CW	REA	Fat
170	51	2	-1.5	71	113	22	0	15	5	16	0.18	0.17	35	0.28	0.06
4%	31%	83%	55%	10%	9%	26%	49%	8%	46%	1%	89%	95%	11%	18%	99%

799 is another real good Epitome son. Epitome adds lots of length and thickness to his calves.

48 STRA EPITOME 783 #3766443
 BD BW WW WR Cat. % Dam's MPPA Age
 GGPLD 2/27/17 86 680 101 1A 100% 98.9 3

ROUSE EPITOME A33

BECKTON EPIC R397 K
GHR FLOWER T21

STRA COPPER 403

BIEBER ROOSEVELT W384
MISS BHR COPPER D 981

HB	GM	CED	BW	WW	YW	M	ME	HPG	CEM	ST	Marb	YG	CW	REA	Fat
143	48	3	-1.7	53	81	21	0	14	4	14	0.25	0.01	16	0.24	0.03
16%	72%	74%	51%	67%	69%	32%	49%	14%	50%	6%	82%	46%	66%	22%	86%

783 is also another Epitome son. He is raised by a Bieber Roosevelt Daughter. The Roosevelt daughters are turning into some terrific cows.

49 STRA DRIVEN 789 #3766551
 BD BW WW WR Cat. % Dam's MPPA Age
 GGPLD 3/1/17 83 703 ET 1A 100% 108.5 12

BIEBER DRIVEN C540

BIEBER HARD DRIVE Y120
BIEBER JOAN 309Y

JACOBSON SADIE R5067

GLACIER LOGAN 040
SEEGER RED SADIE 334

HB	GM	CED	BW	WW	YW	M	ME	HPG	CEM	ST	Marb	YG	CW	REA	Fat
77	50	0	-0.8	66	98	24	0	9	4	7	0.61	0.05	27	0.19	0.02
87%	41%	94%	68%	19%	33%	13%	49%	88%	53%	82%	17%	61%	31%	30%	75%

789 is one of the last Driven's out of Sadie R5067. This is another good son out of that flush. The consistency in it was outstanding.

50 STRA DRIVEN 746 #3766553
 BD BW WW WR Cat. % Dam's MPPA Age
 GGPLD 2/23/17 73 670 ET 1A 100% 108.5 12

BIEBER DRIVEN C540

BIEBER HARD DRIVE Y120
BIEBER JOAN 309Y

JACOBSON SADIE R5067

GLACIER LOGAN 040
SEEGER RED SADIE 334

HB	GM	CED	BW	WW	YW	M	ME	HPG	CEM	ST	Marb	YG	CW	REA	Fat
77	50	0	0.1	69	100	26	0	7	4	8	0.55	0.09	29	0.15	0.02
87%	48%	92%	81%	13%	27%	6%	49%	98%	57%	79%	24%	80%	23%	36%	84%

746 is the last one out of Sadie R5067. He was born a little lighter and didn't have as good of a recip cow but has really turned it on since weaning.

51 STRA BEAST 779 #3766419
 BD BW WW WR Cat. % Dam's MPPA Age
 GGPLD 2/27/17 92 704 104 1A 100% 100.7 4

CRUMP THE BEAST 5125

CRUMP RUNAWAY 3178
MDM SUSIE 133-9

STRA HAY DAY 335

BIEBER MAKIN HAY 9913
HLG MISS MAKE MY DAY 229

HB	GM	CED	BW	WW	YW	M	ME	HPG	CEM	ST	Marb	YG	CW	REA	Fat
119	53	5	0.0	77	116	17	0	6	3	11	0.61	-0.04	39	0.09	-0.05
40%	9%	56%	79%	3%	6%	67%	49%	99%	76%	34%	17%	26%	6%	48%	4%

779 is another bull out of The Beast. He is the top 3% for WW and top 6% for YW. Beast puts a lot of performance in his calves. He is also out of a really easy-keeping Makin Hay Daughter.

52 STRA DRIVEN 774 #3766327
 BD BW WW WR Cat. % Dam's MPPA Age
 GGPLD 2/26/17 96 711 105 1A 100% 101.6 7

BIEBER DRIVEN C540

BIEBER HARD DRIVE Y120
 BIEBER JOAN 309Y

BIEBER GALLE 175X

LOOSLI NEW DEAL 503
 BIEBER GALLE 188S

HB	GM	CED	BW	WW	YW	M	ME	HPG	CEM	ST	Marb	YG	CW	REA	Fat
91	51	2	-0.6	67	99	19	0	14	-2	9	0.82	0.19	28	-0.02	0.05
75%	31%	80%	70%	18%	30%	54%	49%	15%	99%	66%	5%	97%	28%	69%	96%

774 is another real good Driven son out of a cow that has brought a good one to the sale every year.

53 STRA EPITOME 7141 #3766337
 BD BW WW WR Cat. % Dam's MPPA Age
 GGPLD 3/20/17 89 749 97 1A 100% 96.2 6

STRA WINCHESTER 357

SIX MILE WIN-CHESTER 745W
 BAR R MISS COLTER 968

BIEBER LARKABA 141Y

VGW OLY 903
 BASIN LARKABA W179

HB	GM	CED	BW	WW	YW	M	ME	HPG	CEM	ST	Marb	YG	CW	REA	Fat
147	52	3	-1.9	58	104	20	1	10	5	14	0.38	0.15	30	0.24	0.06
13%	18%	75%	48%	49%	21%	38%	55%	74%	35%	6%	53%	92%	22%	22%	98%

7141 is the only Winchester 357 son in the sale. We raised Winchester and used him as a clean up bull for a few years. His calves show a lot of natural thickness and his daughters are turning into great cows.

RED RIGHT. NOW.

Red Angus are the industry favorite for high-quality feeder cattle and ranch-ready replacements. The highly identifiable "Yellow Tag" adds even greater value through marketing options.

Ranch Tested. Rancher Trusted.

Red Angus
redangus.org

Call today for FREE enrollment in the Feeder Calf Certification Program:
940-387-3502, Ext. 2





S A V RECHARGE 3436

D

S A V RECHARGE 3436

17633838

BD	BW	WW	WR	YW	YR
1/3/13	72	969	ET	1472	ET

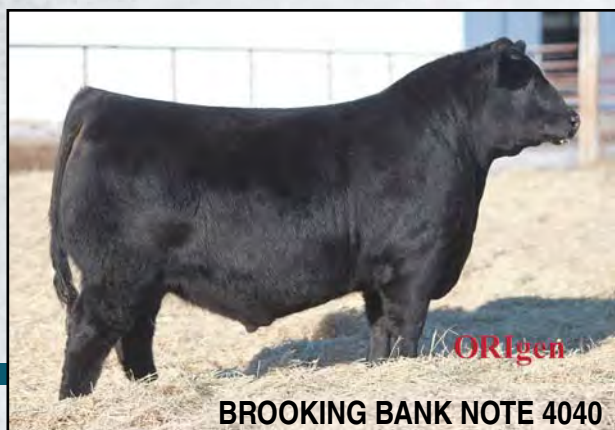
RITO 707 OF IDEAL 3407 7075

R R RITO 707
IDEAL 3407 OF 1418 076

S A V BLACKCAP MAY 4136

S A V 8180 TRAVELER 004
S A V MAY 2397

CED	BW	WW	YW	MILK	MARB	REA	\$W	\$B
2	2.5	68	128	26	-0.04	0.76	60.99	120.82
80%	75%	10%	4%	35%	95%	10%	20%	40%



BROOKING BANK NOTE 4040

D

BROOKING BANK NOTE 4040

18069951

BD	BW	WW	WR	YW	YR
1/28/14	86	921		1548	

CONNELLY EARNAN 076E

CONNELLY CONSENSUS
BRAZILA OF CONANGA 3991 839A

E A ROSE 918

S A V FINAL ANSWER 0035
E A ROSE 738

CED	BW	WW	YW	MILK	MARB	REA	\$W	\$B
4	2.6	73	120	12	0.62	0.52	61.07	134.39
70%	80%	4%	10%	12%	30%	40%	20%	25%



K C F BENNETT FORTRESS

K

K C F BENNETT FORTRESS

17259012

BD	BW	WW	WR	YW	YR
9/25/11	76	635	ET	1054	ET

CONNELLY CONSENSUS

KMK ALLIANCE 6595 I87
BLINDA OF CONANGA 004

THOMAS PATRICIA 9705

S S OBJECTIVE T510 OT26
THOMAS PATRICIA 71138

CED	BW	WW	YW	MILK	MARB	REA	\$W	\$B
13	0.0	77	132	31	0.59	0.65	86.82	128.17
10%	25%	2%	3%	10%	35%	20%	1%	35%



SAC CONVERSATION

L

SAC CONVERSATION

17808532

BD	BW	WW	WR	YW	YR
11/12/13					

SILVEIRAS CONVERSION 8064

BT CROSSOVER 758N
EXG SARAS DREAM S609 R3

LAFILNS FARRAH 0252

S A V 004 PREDOMINANT 4438
LAFILNS FARRAH 7215

CED	BW	WW	YW	MILK	MARB	REA	\$W	\$B
2	1.4	41	81	28	0.47	0.81	43.64	105.44
80%	55%	80%	65%	20%	50%	10%	65%	60%



M SILVEIRAS CONVERSION 8064 16262077
 BD BW WW WR YW YR
 1/19/08 76 888 124 1502 117

BT CROSSOVER 758N

C A FUTURE DIRECTION 5321
 BT ROYAL PRIDE 237G

EXG SARAS DREAM S609 R3

BR MIDLAND
 EXAR SARAS DREAM 9809

CED	BW	WW	YW	MILK	MARB	REA	\$W	\$B
-3	4.4	66	117	22	0.76	0.92	53.09	171.27
95%	95%	10%	10%	60%	20%	3%	40%	3%



N DEER VALLEY ALL IN 17307074
 BD BW WW WR YW YR
 1/23/12 69 772 102

A A R TEN X 7008 S A

MYTTY IN FOCUS
 A A R LADY KELTON 5551

DEER VALLEY RITA 0274

SITZ UPWARD 307R
 G A R OBJECTIVE 2345

CED	BW	WW	YW	MILK	MARB	REA	\$W	\$B
11	0.4	74	128	21	0.65	0.71	77.81	142.29
15%	30%	3%	4%	70%	30%	15%	2%	20%



O MUSGRAVE BIG SKY 17614813
 BD BW WW WR YW YR
 1/16/13 86 915 1467

CONNELLY EARNAN 076E

CONNELLY CONSENSUS
 BRAZILA OF CONANGA 3991 839A

SAV PRIMROSE 7861

S A F 598 BANDO 5175
 S A V PRIMROSE 8244

CED	BW	WW	YW	MILK	MARB	REA	\$W	\$B
9	1.8	66	114	27	78	32	64.53	140.57
30%	60%	10%	15%	30%	15%	70%	15%	20%

P MOGCK BULLSEYE 303 17671310
 BD BW WW WR YW YR
 1/24/13 93 935 117 1420 111

MOGCK BULLSEYE

MOGCK SURE SHOT
 MOGCK MARY 1255

MOGCK ENTELLO 1041

MOGCK WHISPERING WIND 1297
 MOGCK ENTELLO 1859

CED	BW	WW	YW	MILK	MARB	REA	\$W	\$B
1	2.5	74	125	33	0.49	0.57	81.25	134.27
85%	75%	3%	5%	5%	45%	430%	1%	25%

Q DCC IRON MOUNTAIN 910X 358 17585947
 BD BW WW WR YW YR
 4/6/13

PEAK DOT IRON MOUNTAIN 910X

S A V IRON MOUNTAIN 8066
 PANSY OF PEAK DOT 552S

DCC PRIMROSE UP 029

SITZ UPWARD 307R
 DCC PRIMROSE LTN 410

CED	BW	WW	YW	MILK	MARB	REA	\$W	\$B
-3	5.5	62	103	11	0.28	0.51	29.99	115.38
95%	95%	20%	30%	95%	80%	40%	90%	40%



SAC CONVERSION



SAC MESSENGER

54 Ressler CONVERSION 735 18962037
 BD BW WW WR Dam's AVG WR
ANGUS 03/02/17 93 731 100 4-121

SILVEIRAS CONVERSION 8064 | BT CROSSOVER 758N
 EXG SARAS DREAM S609 R3

LAF LINS FARRAH 0252 | S A V 004 PREDOMINANT 4438
 LAFLINS FARRAH 7215

CED	BW	WW	YW	MILK	MARB	REA	\$W	\$B
3	2.6	61	110	23	0.19	0.59	56.73	130.31
75%	80%	20%	15%	55%	90%	35%	25%	30%

This is a rare opportunity to own a FULL brother of the \$100,000 Select Sires stud bull, SAC Conversation. He is a phenotypic stand out worthy of your consideration. We kept every single Conversation heifer, each one exudes style, depth and extreme eye appeal. We predict that you will want to keep every one of the daughters as they will exhibit the same feminine package.

Lot 54 is a full brother to SAC Conversation who sold for \$100,000 to Select Sires.

Lot 54 is also a full brother to SAC Messenger who sold to Mohnen Angus & ST Genetics for \$70,000.



EA MADAME PRIDE 0400, dam

55 Ressler CONVERSATION 718 19008632
 BD BW WW WR Dam's AVG WR
ANGUS 02/24/17 89 720 100 5-104

SAC CONVERSATION

SILVEIRAS CONVERSION 8064
 LAFLINS FARRAH 0252

EA MADAME PRIDE 0040

SITZ DIMENSION 8607
 EA MADAME PRIDE 8828

CED	BW	WW	YW	MILK	MARB	REA	\$W	\$B
3	2.6	48	86	30	0.49	0.49	50.23	91.12
75%	80%	60%	60%	10%	55%	50%	40%	80%

Ressler Conversation 718 comes from a carefully chosen mating that resulted in a bull expansive in his rib, wide across his top, and stands down with extra base in his hind quarter. He's out of one of our best donor cows. She raised Accelerated Genetics stud bull, Ellingson Secretary 2011. The full sisters out of this mating look PHENOMINAL. They are easy fleshing, deep ribbed, and thick into the hind quarter.



Lot 56

56 Ressler ALL IN 701 18961482
 BD BW WW WR Dam's AVG WR

02/15/17 92 777 109 3-106

DEER VALLEY ALL IN

A A R TEN X 7008 S A
 DEER VALLEY RITA 0274

RAR MENTOR 646 R307

CONNEALY MENTOR 7374
 SILVER C SHOSHON NCHPTR H646

CED	BW	WW	YW	MILK	MARB	REA	\$W	\$B
6	2.0	69	118	26	0.68	0.60	64.87	139.49
50%	65%	5%	10%	30%	30%	30%	10%	20%

This is a great herdsire prospect that will increase profitability with his consistently high scores in the \$Value department and an impressive +118 YW. His dam started her career with a weaning ratio of 3@106 and he earned an individual weaning ratio of 109. 701 demonstrates that ideal Angus breed phenotype, flare through his shoulder, square through his hip, and depth in his rib.



A paternal sister to lot 57.



EA MADAME PRIDE 0400, dam

This cow has produced progeny that have sold for more than \$50,000 combined. This is a prime example of PROVEN genetics.

57 Ressler CONVERSATION 726

19008634

BD	BW	WW	WR	Dam's AVG WR
02/26/17	88	692	100	5-104

ANGUS

SAC CONVERSATION

SILVEIRAS CONVERSION 8064
LAFLINS FARRAH 0252

EA MADAME PRIDE 0040

SITZ DIMENSION 8607
EA MADAME PRIDE 8828

CED	BW	WW	YW	MILK	MARB	REA	\$W	\$B
2	2.4	60	108	23	0.53	0.60	57.01	115.30
85%	75%	20%	20%	55%	45%	30%	25%	50%

Here is a phenotypic standout with lots of capacity and volume through his midsection. This bulls dam raised Ellingson Secretary 2011, purchased by Accelerated Genetics. Don't miss this opportunity to own a maternal brother that sold for \$30,000, one that will raise the bar with his offspring.



Lot 56

58 Ressler FORTRESS 728

18954130

BD	BW	WW	WR	Dam's AVG WR
02/26/17	92	834	117	6-107

K C F BENNETT FORTRESS

CONNELY CONSENSUS
THOMAS PATRICIA 9705

MOGCK ELBA 2040

MOGCK STRATEGIST 175
MOGCK ELBA 243

CED	BW	WW	YW	MILK	MARB	REA	\$W	\$B
6	1.9	79	136	30	0.59	0.62	77.95	146.69
50%	65%	1%	1%	10%	40%	27%	2%	15%

Ressler Fortress 728 has dominated his peers in overall power and performance. He is in the top 1% for WW and YW, the top 2% for \$W \$F and the top 10% for YH, Milk, and Fat. Compile all that into a naturally thick and deep sided bull with sound foot and leg structure. He should sire powerfully constructed progeny that will increased profitability.



Lot 59

59 Ressler RECHARGE 725

18962644

BD	BW	WW	WR	Dam's AVG WR
02/26/17	86	764	107	4-104

S A V RECHARGE 3436

RITO 707 OF IDEAL 3407 7075
S A V BLACKCAP MAY 4136

RAR MENTOR 828 Z217

CONNELLY MENTOR 7374
SILVER CREEK GRIDTOPPERH828

CED	BW	WW	YW	MILK	MARB	REA	\$W	\$B
8	0.8	66	122	25	0.32	0.68	61.01	139.98
35%	35%	10%	5%	40%	80%	20%	15%	20%

What a specimen. Width from top to bottom and extra substance in his bone. This bull comes from a cow that consistently throws the light BW calves and then turns around and weans them off heavy with a WR of 4@104. He has the ability to add extreme performance to a set of feeder calves with a +121 YW. A maternal brother sold to Zach Hintze of Tappen, ND.



Lot 60

60 Ressler RECHARGE 708

18962703

BD	BW	WW	WR	Dam's AVG WR
02/21/17	79	778	109	7-102

S A V RECHARGE 3436

RITO 707 OF IDEAL 3407 7075
S A V BLACKCAP MAY 4136

SILVER C LAU MAV GM H778

G A R GRID MAKER
LAUS BANDO 155 TRAVELER 5204

CED	BW	WW	YW	MILK	MARB	REA	\$W	\$B
8	0.4	61	104	25	0.22	0.57	60.51	113.41
35%	30%	20%	25%	40%	90%	35%	20%	50%

A stout Recharge son possessing extra muscle mass, bone substance, and boldness of rib. He has that phenotypic balance and power that will fulfill the genomic and phenotypic goals you are striving for. With a modest birth weight, +11 CE and an Adj WW of 778, he should sire consistently moderate birth weight calves that perform at weaning time. You cannot miss with this bull.



Lot 61



EA Rose 918, granddam of Lot 61

61 Ressler BANK NOTE 704

18962723

BD	BW	WW	WR	Dam's AVG WR
03/12/17	74	761	107	2-104

BROOKING BANK NOTE 4040

CONNEALY EARNAN 076E
E A ROSE 918

RESSLER S ENTELLO 425

MOGCK HEMISPHERE 742
MOGCK ENTELLO 1148

CED	BW	WW	YW	MILK	MARB	REA	\$W	\$B
9	-0.3	64	111	21	0.51	0.43	56.44	127.22
25%	20%	15%	15%	70%	50%	60%	25%	32%

A stout Bank Note son that exhibits expressive muscle, easy fleshing ability, and a spacious rib capacity. Use all that to improve not only the look of your calves but also their carcass scores. This bull's dam has just started her career and started it right with a weaning ratio of 2@104 and comes from a long line of calving ease in her pedigree.



Lot 62

62 Ressler BIG SKY 711

18961985

BD	BW	WW	WR	Dam's AVG WR
02/22/17	98	780	107	1-86

ANGUS

MUSGRAVE BIG SKY

CONNEALY EARNAN 076E
SAV PRIMROSE 7861

B/R RUBY 529

S A V BISMARCK 5682
B/R RUBY 1224

CED	BW	WW	YW	MILK	MARB	REA	\$W	\$B
6	2.8	58	100	34	0.48	0.67	63.22	137.41
50%	80%	25%	30%	3%	55%	20%	15%	25%

A definite phenotypic stand out full of muscle and natural thickness down his top, through his hind quarter and into his base. He is ranking in the top 6% of the Angus breed for Milk and weaned off at 815 lbs. He should sire extra performance, pounds at weaning, and extra dollars on sale day.



Lot 63

63 Ressler RECHARGE 738

18962669

BD	BW	WW	WR	Dam's AVG WR
03/03/17	98	786	110	4-100

S A V RECHARGE 3436

RITO 707 OF IDEAL 3407 7075
S A V BLACKCAP MAY 4136

RAR MENTOR H516 R165

CONNELLY MENTOR 7374
SILVER C MAVERICK EXP H516

CED	BW	WW	YW	MILK	MARB	REA	\$W	\$B
2	3.4	67	122	25	0.24	0.67	51.05	118.95
85%	90%	10%	5%	40%	85%	20%	40%	40%

Ressler Recharge 738 has commanded our attention every time we walk in the pen. He is extremely expressive in his muscling, stands down in his circumference of bone, is tremendously wide over his top and has expansive depth in his rib. He is out of a model angus broody cow. Talk about increasing your profitability with the performance he will provide.

64 Ressler ALL IN 700

18962576

BD	BW	WW	WR	Dam's AVG WR
02/13/17	79	657	92	4-97

DEER VALLEY ALL IN

A A R TEN X 7008 S A
DEER VALLEY RITA 0274

RAR CHISUM 470 Z218

S CHISUM 6175
SILVER C MAVERICK ND208 470C

CED	BW	WW	YW	MILK	MARB	REA	\$W	\$B
12	-0.4	57	98	23	0.53	0.51	53.60	130.43
10%	15%	30%	35%	55%	45%	45%	30%	30%

This bull has the potential to be your next heifer bull with a 79 lb BW and a +12 CE EPD. In addition, he weaned off at 705 lbs. It is hard to find a bull with a lower birth weight that can still crank out a weaning weight in the fall that will compete with his contemporaries. He adds serious maternal strength to your future replacement heifers especially scoring in the top 2% for CEM. That is just his numbers. Now let talk about his phenotype. He demonstrates that ideal Angus breed look, flare in his shoulder, square in his hip, and depth in his rib. What a complete package.

65 Ressler FORTRESS 729

18954115

BD	BW	WW	WR	Dam's AVG WR
02/28/17	88	716	100	4-99

K C F BENNETT FORTRESS

CONNELLY CONSENSUS
THOMAS PATRICIA 9705

RAR WAR ALLIANCE 805 Z205

WAR ALLIANCE 9126 6006
SILVER CREEK SHOSH 112 H805J

CED	BW	WW	YW	MILK	MARB	REA	\$W	\$B
8	1.1	64	111	27	0.49	0.56	60.42	126.80
35%	45%	15%	15%	25%	55%	37%	20%	

This Fortress son owns a strong and balanced set of EPDS. His natural thickness carries from his shoulders to his hindquarter and continues into his base. He is the kind of bull that will build a reputation for your feeder calves.



Lot 66

66 Ressler BANK NOTE 724

18962739

BD	BW	WW	WR	Dam's AVG WR
02/25/17	97	745	100	1-86

BROOKING BANK NOTE 4040

CONNELLY EARNAN 076E
E A ROSE 918

B/R RUBY 529

S A V BISMARCK 5682
B/R RUBY 1224

CED	BW	WW	YW	MILK	MARB	REA	\$W	\$B
8	2.2	58	99	18	0.58	0.51	54.01	130.45
35%	70%	25%	30%	90%	40%	45%	30%	30%

Ressler Bank Note 724 exhibits a smooth shoulder, deep rib, and width across his top. His dam is stamping all her progeny with this same look, and her daughters have started doing the same. We like these genetics so much we retained a maternal brother for our own herd.



BR Ruby 529X



Maternal sister to lot 67.



Lot 67

67 Ressler BIG SKY 706

18927954

ANGUS	BD	BW	WW	WR	Dam's AVG WR
	02/20/17	86	709	100	1-86

MUSGRAVE BIG SKY

CONNEALY EARNAN 076E
SAV PRIMROSE 7861

B/R RUBY 529

S A V BISMARCK 5682
B/R RUBY 1224

CED	BW	WW	YW	MILK	MARB	REA	\$W	\$B
16	-0.8	43	78	28	0.41	0.82	53.52	126.92
1%	10%	75%	75%	20%	65%	10%	30%	35%

This Big Sky son is a smooth made bull with a moderate 86 lb BW, a +11 CE rating, and a 745 lb WW. He is uniformly made with the muscling carrying all the way through to his base. He should add consistent stretch and thickness to a set of calves.



Lot 68

68 Ressler RECHARGE 719

18962658

	BD	BW	WW	WR	Dam's AVG WR
	02/24/17	89	654	92	4-99

S A V RECHARGE 3436

RITO 707 OF IDEAL 3407 7075
S A V BLACKCAP MAY 4136

SILVERCREEK JODY EXPECT H095

G A R EXPECTATION 4915
SILVER C JODY GM H648

CED	BW	WW	YW	MILK	MARB	REA	\$W	\$B
7	1.8	48	89	24	0.25	0.51	42.40	103.98
45%	60%	60%	50%	45%	85%	45%	65%	65%

Ressler Fortress 723 is out of a phenomenal cow. Last year she produced a quality bull purchase by Verlin Stepler of Montana. This year's calf is another deep barreled and naturally thick example. He excelled in the feed lot and should sire the same kind of calves. If you are looking to add performance to your females and pounds to your feeder calves, this is your bull.



A paternal sister to lot 69.

69 Ressler CONVERSATION 716

18962706

	BD	BW	WW	WR	Dam's AVG WR
	02/23/17	88	705	99	7-102

SAC CONVERSATION

SILVEIRAS CONVERSION 8064
LAFLINS FARRAH 0252

MOGCK ELBA 2019

S A V PAY DAY 3261
MOGCK ELBA 976

CED	BW	WW	YW	MILK	MARB	REA	\$W	\$B
4	0.8	37	70	30	0.72	0.76	41.03	105.48
70%	35%	90%	85%	10%	25%	15%	70%	60%

This Conversation bull offers cattlemen an outcross deep in his rib, thick over his top, and excellent in his foot and leg structure. With his Dam holding a weaning ratio of 7@102, an IMF ratio of 3@116 and a RE ratio 3@102, he should sire high functioning females that perform. He ranks in the top 10% for Milk, \$G, and \$YG.



Lot 70

70 Ressler BANK NOTE 703

18962752

BD	BW	WW	WR	Dam's AVG WR
02/19/17	85	722	101	8-101

BROOKING BANK NOTE 4040

CONNELLY EARNAN 076E
E A ROSE 918

MOGCK ENTELLO 1148

QUAKER HILL OBJECTIVE 3J15
MOGCK ENTELLO 1454

CED	BW	WW	YW	MILK	MARB	REA	\$W	\$B
6	1.5	59	99	20	0.40	0.37	52.60	109.98
50%	55%	25%	30%	80%	65%	70%	35%	55%

This moderate framed bull is naturally balanced in his shape, deep in his rib, and expressive in his muscling. Add that to a balanced set of EPD and you have a bull you can use to add stretch to his progeny and improve the carcass scores of your feeder calves. This bulls dam has a calving ease pedigree, but this year we bred her to a cow bull.



Lot 71

71 Ressler BULLSEYE 758

18928033

BD	BW	WW	WR	Dam's AVG WR
03/17/17	83	735	103	1-103

MOGCK BULLSEYE 303

MOGCK BULLSEYE
MOGCK ENTELLO 1041

RESSLER S JODY 406

CONNELLY CAPITALIST 028
SILVER CREEK JODY 208 H395C

CED	BW	WW	YW	MILK	MARB	REA	\$W	\$B
7	1.1	63	107	31	0.54	0.50	64.35	120.35
45%	45%	15%	20%	10%	43%	47%	10%	40%

This smooth and stylishly made Bullseye son is out of a moderately framed easy fleshing cow. She has a tight udder with small teats. This is the last year to get your hand on one of these Bullseye sons. His calves are known for producing performance driven daughters with good temperaments and steers that pack on the pounds in the feed lots. Pair that with the maternal strength found in his grand-dam, boasting a weaning ration of 11@113.



Lot 72

72 Ressler BULLSEYE 762

19009094

BD	BW	WW	WR	Dam's AVG WR
ANGUS 03/18/17	96	760	107	4-101

MOGCK BULLSEYE 303

MOGCK BULLSEYE
MOGCK ENTELLO 1041

RAR CONNELLY 828 R153

CONNELLY MENTOR 7374
SILVER CREEK GRIDTOPPERH828

CED	BW	WW	YW	MILK	MARB	REA	\$W	\$B
1	4.0	78	133	25	0.76	0.68	71.14	143.76
90%	95%	1%	2%	40%	20%	20%	5%	15%

This bull is out of a cow that produces a consistent type every year. He is one of the youngest on the sale and he has still earned his keep. He is a larger framed Bullseye son that will add performance, pounds, and profit to your calf crop.



Lot 73

73 Ressler RECHARGE 702

18962705

BD	BW	WW	WR	Dam's AVG WR
02/16/17	95	737	103	9-101

S A V RECHARGE 3436

RITO 707 OF IDEAL 3407 7075
S A V BLACKCAP MAY 4136

SILVER C LAUS MAV GM H651

G A R GRID MAKER
LAUS BANDO 155 TRAVELER 5204

CED	BW	WW	YW	MILK	MARB	REA	\$W	\$B
2	3.3	60	104	21	0.24	0.53	46.85	105.15
85%	90%	20%	25%	70%	85%	40%	50%	60%

Ressler Recharge 702 reigns from a prolific bloodline of broody cows. She successfully raises a top notch calf year after year. This year's calf is no different. He expresses that natural thickness through his hip and shoulder all the way into lower quarter and down into his base as well as excellent foot and leg design.



Lot 74



A paternal sister to lot 74.

74 Ressler RECHARGE 705

18962704

BD BW WW WR Dam's AVG WR
02/20/17 93 745 104 7-101

S A V RECHARGE 3436

RITO 707 OF IDEAL 3407 7075
S A V BLACKCAP MAY 4136

MOGCK ENTELLO 108

MOGCK WHISPERING WIND 584
MOGCK ENTELLO 586

CED	BW	WW	YW	MILK	MARB	REA	\$W	\$B
3	2.4	59	104	24	0.11	0.45	51.49	99.72
75%	75%	25%	25%	45%	95%	55%	35%	70%

This Recharge son comes from a dam has a weaning ratio of 7@101 and IMF scores with 3 @107. He himself ranks in the top 10% carcass Fat. With his explosive growth and those genetics, he should inject pounds, profit, and carcass quality in your calves.



EA MADAME PRIDE 0400, dam

Lot 75's dam, as a heifer, produced a son, Ellingson Secretary 2011, that sold for \$30,000 at Ellingson Angus in their 2013 sale.



A paternal sister to lot 75.

75 Ressler CONVERSATION 745

19009129

BD BW WW WR Dam's AVG WR
03/10/17 87 683 100 5-104

SAC CONVERSATION

SILVEIRAS CONVERSION 8064
LAFLINS FARRAH 0252

EA MADAME PRIDE 0040

SITZ DIMENSION 8607
EA MADAME PRIDE 8828

CED	BW	WW	YW	MILK	MARB	REA	\$W	\$B
7	0.3	50	90	26	0.62	0.24	57.58	83.08
45%	25%	55%	50%	30%	35%	85%	25%	85%

This is one of only 3 Conversation and Madame matings offered in this sale. These sons provide a unique outcross for many of today's ranchers with performance running deep in the bloodlines. 745's expressive muscle pattern carries through into his thick hindquarter and his top expresses amiable dimension. We have retained every single heifer from this mating and you will want to do the same with his daughters. It truly is his maternal attributes that will command your attention.



Lot 76

76 Ressler BANK NOTE 715

18962754

BD	BW	WW	WR	Dam's AVG WR
02/23/17	81	690	97	6-100

BROOKING BANK NOTE 4040

CONNEALY EARNAN 076E
E A ROSE 918

DDA GRETTA 709

DDA SURE ENOUGH 6D
DDA GRETTA 556

CED	BW	WW	YW	MILK	MARB	REA	\$W	\$B
7	0.9	49	76	16	0.31	0.41	44.55	82.38
45%	40%	55%	75%	95%	80%	65%	60%	85%

Ressler Bank Note 715 is a well balanced calving ease prospect that offers cattlemen an outcross. He has ideal length and expresses a big hip in a moderate frame. His dam is that ideal sized cow producing a consistent BW. He should stamp his calves with that same phenotypic look, the look that will take your calves to the next level come sale day.



Lot 77

77 Ressler RECHARGE 713

18962656

BD	BW	WW	WR	Dam's AVG WR
02/23/17	97	765	107	4-105

S A V RECHARGE 3436

RITO 707 OF IDEAL 3407 7075
S A V BLACKCAP MAY 4136

SILVER CREEK JODY GM H086

G A R GRID MAKER
SILVER C JODY ND208 H772

CED	BW	WW	YW	MILK	MARB	REA	\$W	\$B
2	3.3	64	117	25	0.22	0.57	49.04	101.57
85%	90%	15%	10%	40%	90%	35%	45%	

This is a very complete maternal Recharge son out of a top producing cow in our herd. He has a maternal quality in his pedigree, one needed to sire fertile and high functioning females. He also has the genetics to sire a quality set of feeder calves, especially with an impressive +117 YW. You will recognize his true value when his daughters come into production.



Lot 78

78 Ressler ALL IN 739

18927907

BD	BW	WW	WR	Dam's AVG WR
03/03/17	88	711	100	1-100

DEER VALLEY ALL IN

A A R TEN X 7008 S A
DEER VALLEY RITA 0274

RESSLER ERALINE 538

DCC IRON MOUNTAIN 910X 358
MOGCK ERALINE 1408

CED	BW	WW	YW	MILK	MARB	REA	\$W	\$B
-1	3.6	68	116	21	0.47	0.61	50.41	128.58
95%	95%	10%	10%	70%	57%	28%	40%	30%

This All In son has unexpected size, stretch, and muscle mass coming from a first calf heifer. He models that Angus breed look, in terms of his extra thickness in his hind quarter, voluminous shape in his rib, and natural width over his top. His dam expresses that same model Angus look and comes from a long line of proven producers.



79 Ressler BANK NOTE 732

18996266

BD	BW	WW	WR	Dam's AVG WR
03/02/17	79	787	110	2-111

BROOKING BANK NOTE 4040

CONNEALY EARNAN 076E
E A ROSE 918

RESSLER M ENTELLO 422

MOGCK TIMELESS 1252
MOGCK ENTELLO 1919

CED	BW	WW	YW	MILK	MARB	REA	\$W	\$B
6	1.9	68	115	27	0.99	0.64	76.57	170.26
50%	65%	10%	10%	25%	10%	25%	2%	3%

Bank Note son out of a cow that has made a lot of noise early in her production career. She boasts a weaning ratio of 2@111. 732 is moderately framed and carries shape into his rib and hind quarter on a sound set of feet and legs. He is the kind that should sire high growth calves.



Lot 80

80 Ressler BULLSEYE 753

18927949

BD	BW	WW	WR	Dam's AVG WR
03/14/17	87	758	106	2-104

MOGCK BULLSEYE 303

MOGCK BULLSEYE
MOGCK ENTELLO 1041

RESSLER M ERALINE 418

MOGCK HEMISPHERE 742
MOGCK ERALINE 387

CED	BW	WW	YW	MILK	MARB	REA	\$W	\$B
2	1.8	73	128	32	0.60	0.49	69.44	148.45
85%	60%	3%	3%	10%	38%	50%	10%	

This is a moderate BW Bullseye son that stands down in his circumference of bone, square in his structure, smooth in his shoulder, and ample shape to his top and hind quarter. He owns an imposing set of performance traits, +73 WW and +128 YW. His young dam carries a weaning ratio of 2@104 and his grand dam holds a noteworthy wean ratio of 9@110. Once again, a bull that influences fertility, longevity, and performance all into one package.



81 Ressler BANK NOTE 714

18962753

BD	BW	WW	WR	Dam's AVG WR
02/23/17	76	674	95	6-98

BROOKING BANK NOTE 4040

CONNEALY EARNAN 076E
E A ROSE 918

DDA GRETTA 799

DDA FAHREN 5Z
DDA GRETTA 017

CED	BW	WW	YW	MILK	MARB	REA	\$W	\$B
9	-0.2	47	73	14	0.35	0.18	41.57	69.80
25%	20%	65%	80%	95%	75%	90%	65%	95%

An attractively made Bank Note son out of a smaller framed cow with an excellent udder and small teats. He harnesses strong maternal strengths coming from both the top and bottom sides. This should provide a fancy set of future replacement heifers to choose from. May be suitable for heifers.

82 Ressler BULLSEYE 764

18928030

BD	BW	WW	WR	Dam's AVG WR
03/22/17	76	723	101	4-98

MOGCK BULLSEYE 303

MOGCK BULLSEYE
MOGCK ENTELLO 1041

RAR RITO H778 R150

RITO 7065 OF RITA 5M46 OBJ
SILVER C LAU MAV GM H778

CED	BW	WW	YW	MILK	MARB	REA	\$W	\$B
10	-0.3	59	97	29	0.72	0.48	62.89	114.92
20%	20%	25%	35%	15%	25%	52%	15%	50%

Here is a moderately framed Bullseye son out of an ideal sized and easy keeping cow. He expresses that natural muscle on a working set of feet and legs, allowing him to move out athletically across the pen. He should make an excellent addition to anyone's herd.

83 Ressler FORTRESS 742

19009088

BD	BW	WW	WR	Dam's AVG WR
03/08/17	78	734	103	1-103

K C F BENNETT FORTRESS

CONNEALY CONSENSUS
THOMAS PATRICIA 9705

RESSLER JODY 503

DEER VALLEY ALL IN
SILVER CREEK JODY GM H813C

CED	BW	WW	YW	MILK	MARB	REA	\$W	\$B
14	1.2	83	140	24	0.35	0.45	84.84	145.04
3%	45%	1%	1%	45%	75%	55%	1%	15%

Ressler Fortress 742 offers a calving ease outcross in a double bred performance package. He could see considerable application in some of the most popular bloodlines cattlemen currently have in their herds. His docile dam exhibits a flawless udder and teats. This bull is stacked with maternal quality going back several generations. His grand-dam earned a weaning ratio of 8@104 and his great grand-dam boasts a weaning ratio of 11@113. This bull will instill maternal quality into a group of replacements.

84 Ressler IRON 752

18928020

BD	BW	WW	WR	Dam's AVG WR
03/14/17	88	703	99	7-101

DCC IRON MOUNTAIN 910X 358

PEAK DOT IRON MOUNTAIN 910X
DCC PRIMROSE UP 029

MOGCK ERALINE 1408

K C F BENNETT PERFORMER
MOGCK ERALINE 1084

CED	BW	WW	YW	MILK	MARB	REA	\$W	\$B
1	2.9	56	92	20	0.30	0.51	45.54	111.22
90%	85%	30%	45%	80%	80%	45%	55%	55%

This is a deep profiled individual that moves out athletically across the pen. He comes from a line of performance bloodlines that also excel in first time heifer pregnancy retentions. His dam has a HP (fertility rate in daughters) that is ranked in the top 3% in the Angus breed. His strengths many not be realized until his first daughters calves start hitting the ground.

85 Ressler ALL IN 710

18927925

BD	BW	WW	WR	Dam's AVG WR
02/22/17	97	726	102	3-98

DEER VALLEY ALL IN

A A R TEN X 7008 S A
DEER VALLEY RITA 0274

RAR MENTOR 213 R309

CONNEALY MENTOR 7374
SILVER C LAUS JODY 616 H213

CED	BW	WW	YW	MILK	MARB	REA	\$W	\$B
3	2.6	59	103	21	0.58	0.59	45.75	116.45
75%	80%	25%	25%	70%	40%	35%	55%	

Ressler All In 710 incorporates structural integrity and maternal quality. He has base to his rib and breadth across his top. He is smooth made on a sound set of feet and legs. His granddam has a dependable weaning ratio of 13@101. This bull is phenotypically pleasing to the eye and bring the genetics to your herd.



A paternal sister to lots 86 & 87.

86 Ressler **FORTRESS 744**

18954089

BD	BW	WW	WR	Dam's AVG WR
03/10/17	83	673	94	1-94

K C F BENNETT FORTRESS

CONNELLY CONSENSUS
THOMAS PATRICIA 9705

RESSLER JODY 501

WERNER WAR PARTY 2417
SILVER CREEK JODY GRANT H087

CED	BW	WW	YW	MILK	MARB	REA	\$W	\$B
7	1.7	62	111	29	0.44	0.67	57.87	117.92
45%	60%	15%	15%	15%	60%	20%	20%	

Ressler Fortress 744 is a herd sire prospect offering another opportunity for an outcross. He is a smooth made, moderate BW bull, Al'd 6 generations back. His grand-dam displays a weaning ratio of 4@103 and he himself owns a strong set of WW and YW performance traits. This is an excellent opportunity to own a herd sire that comes from a direct result of strong reproductive fertility.

87 Ressler **FORTRESS 723**

18954085

BD	BW	WW	WR	Dam's AVG WR
02/25/17	74	700	98	1-98

K C F BENNETT FORTRESS

CONNELLY CONSENSUS
THOMAS PATRICIA 9705

RESSLER JILT 502

WERNER WAR PARTY 2417
MOGCK JILT 1515

CED	BW	WW	YW	MILK	MARB	REA	\$W	\$B
14	-1.6	59	108	31	0.53	0.57	61.77	126.21
3%	5%	25%	20%	10%	45%	35%	15%	

This is an attractive Fortress son easily classified as a sleep all night heifer bull. Raised by a young but big barreled, easy fleshing cow, sound in her structure. His grand dam boasts a weaning ratio of 9@110. He has the genetic heritage to produce some powerfully constructed progeny delivered in a calving ease package.



88 Ressler **BULLSEYE 747**

18996305

BD	BW	WW	WR	Dam's AVG WR
03/12/17	74	693	97	6-96

ANGUS

MOGCK BULLSEYE 303

MOGCK BULLSEYE
MOGCK ENTELLO 1041

MOGCK ROSEBUD 249

WOODHILL MAINLINE
MOGCK ROSEBUD 2297

CED	BW	WW	YW	MILK	MARB	REA	\$W	\$B
13	-3.0	50	83	31	0.51	0.37	61.53	99.04
5%	1%	55%	65%	10%	50%	70%	15%	70%

Ressler Bullseye 747 excels in the calving ease department and was bred with commercial cattlemen in mind. He stems from a cow moderately framed with consistent producing career and the ability to keep her condition through each year. This bull has lots of volume and capacity through his midsection and moves out effortlessly on a superior set of feet and legs.



SERVICE SIRES OF BRED HEIFERS



BIEBER FEDERALIST B543



PIE JUST RIGHT 540



PIE CINCH 4126



Lot 89

89 STRA COLLEEN 607

#3556539

BD	BW	WW	WR	Cat.	%	Dam's MPPA	Age
2/6/16	76	611	ET	1A	100%	102.9	12

BIEBER ROLLIN DEEP Y118

BIEBER ROOSEVELT W384
BIEBER TILLY 399W

HRR COLLEEN 429

GLACIER LOGAN 210
HOLDEN COLLEEN 6024

Wow what a bred heifer to start off the bred heifers with. She is a tank. In our ET program this is the type of heifers we strive to produce. This heifer is super deep ribbed and thick. She is a full sister to our high-selling bull in our 2017 sale to Gill Red Angus. The Colleen 429 and Rollin Deep full was one of the most consistent flushes I have done. This is an opportunity to purchase part of that. She is selling AI bred to Pieper Just Right. This calf could be special. Due 2-22-2018.

HB	GM	CED	BW	WW	YW	M	ME	HPG	CEM	ST	Marb	YG	CW	REA	Fat
109	50	3	-0.9	56	87	28	1	12	6	10	0.54	0.02	21	0.20	0.02
49%	34%	76%	63%	53%	54%	2%	59%	33%	26%	53%	22%	50%	49%	25%	80%



HRR COLLEEN 429



BIEBER ROLLIN DEEP Y118



STRA TRENDING 618



CRUMP FORERUNNER 6601



Lot 90



Lot 91



Lot 92

90 STRA YODDA 6104

#3556484

BD	BW	WW	WR	Cat.	%	Dam's MPPA	Age
3/5/16	79	692	105	1A	100%	102.7	3

ROUSE EPITOME A33

BECKTON EPIC R397 K
GHR FLOWER T21

STRA YODDA 306

BIEBER H HUGHES W109
BIEBER YODDA 10148

HB	GM	CED	BW	WW	YW	M	ME	HPG	CEM	ST	Marb	YG	CW	REA	Fat
145	52	1	-0.7	69	114	22	0	13	7	13	0.46	0.22	37	-0.01	0.04
12%	17%	87%	66%	13%	8%	26%	46%	22%	16%	10%	33%	99%	8%	68%	97%

6104 is an outstanding Epitome bred heifer. I selected a few of the Epitome heifers for this sale to show you what this sire can do. Epitome on the top and Bieber Hughes on the bottom is going to make an awesome cow. Dam has an MPPA of 102.7. She is dark cherry red and super long with lots of rib. She is also AI bred to our exciting new herd sire, Crump Forerunner 6601, that we purchased last year from Crump Red Angus. We are excited to see the first calf crop out of him. Due 2-22-2018.

91 STRA SAM 6119

#3556455

BD	BW	WW	WR	Cat.	%	Dam's MPPA	Age
3/13/16	72	652	99	1A	100%	104.0	5

ROUSE EPITOME A33

BECKTON EPIC R397 K
GHR FLOWER T21

BIEBER SAM 393Y

BIEBER BOEING W381
BASIN SAM 25S6

HB	GM	CED	BW	WW	YW	M	ME	HPG	CEM	ST	Marb	YG	CW	REA	Fat
115	51	2	-0.2	61	106	22	1	11	7	10	0.35	0.18	33	0.07	0.04
40%	21%	83%	75%	34%	17%	22%	56%	50%	14%	50%	57%	97%	13%	50%	96%

Wow, for another outstanding Epitome bred heifer. She is out of phenotypically one of my favorite cows. She has been on the list of possibly flushing for many years. She brings in a great one every year. Dam has an MPPA of 104. She is AI bred to Pieper Just Right. Due 2-22-2018.

92 STRA TINA 662

#3556529

BD	BW	WW	WR	Cat.	%	Dam's MPPA	Age
2/21/16	76	768	111	1A	100%	105.7	2

BIEBER SPARTACUS A193

BIEBER ROUSE SAMURAI X22
BIEBER TILLY 233U

STRA TINA 457

LSF HIGH YIELD 8088U
DAMAR TINA U845

HB	GM	CED	BW	WW	YW	M	ME	HPG	CEM	ST	Marb	YG	CW	REA	Fat
97	51	1	-2.1	72	109	20	8	10	2	9	0.64	0.11	31	0.12	0.03
66%	26%	89%	41%	8%	13%	46%	98%	67%	81%	56%	12%	86%	18%	39%	88%

662 is a tough heifer to part with. She was one of my favorite heifers as a calf and that never really changed as she got older. She is offered to you today because she fell outside our calving window. This heifer is out of a beautiful, perfect-uddered High Yield daughter. She is going to do great things. She is bred to Federalist. 4-25-2018.



Lot 93

93 STRA RAMBO 655

#3556563

BD	BW	WW	WR	Cat.	%	Dam's MPPA	Age
2/21/16	75	677	ET	1A	100%	109.6	12

BIEBER H HUGHES W109

BASIN HOBO 0545
BASIN ROSE 06T0

BAR R MISS RAMBO 71P

FORSTER RAMBO 1061
BAR R MISS GRAND CANYON 023

HB	GM	CED	BW	WW	YW	M	ME	HPG	CEM	ST	Marb	YG	CW	REA	Fat
115	47	2	-0.3	65	96	25	3	14	9	11	0.33	0.15	27	0.00	0.03
42%	86%	82%	73%	22%	34%	6%	79%	11%	6%	34%	62%	94%	30%	66%	93%

655 comes right off the top of the replacement pen. She is an ET daughter out of our great Rambo 71P. 71P is a performance cow that has raised many sale highlight bulls each year. Her daughters have lots of milk and really know how to raise a good one. She sells AI bred to Federalist. Due 2-22-2018.



Lot 94

94 STRA CHERABEL 676

#3556552

BD	BW	WW	WR	Cat.	%	Dam's MPPA	Age
2/25/16	86	627	ET	1A	100%	106.7	14

ANDRAS NEW DIRECTION R240

ANDRAS IN FOCUS B152
ANDRAS KURUBA B111

PFFR CHERABEL 227

BADLANDS CUT ABOVE 012
SBCC CHERABEL L-419

HB	GM	CED	BW	WW	YW	M	ME	HPG	CEM	ST	Marb	YG	CW	REA	Fat
68	49	1	0.3	63	99	16	-6	11	2	6	0.35	0.14	30	-0.10	0.01
90%	55%	89%	82%	28%	28%	78%	8%	47%	82%	89%	57%	92%	22%	86%	73%

We have not offered to many daughters out of the Cherabel cow family. These daughters always rise to the top. They exhibit perfect udders. The Cherabel daughter's know how to bring in the top weaning weight bulls. Lots 9 and 30 are both bull raised by Cherabel daughters. This heifer is also sired by the popular Genex sire, Andras New Direction. This heifer should make one heck of cow. She bred to Federalist. Due 3-13-2018.



Lot 95

95 STRA CHERABEL 6135

#3556475

BD	BW	WW	WR	Cat.	%	Dam's MPPA	Age
3/23/16	79	702	107	1A	100%	102.2	4

LSF HIGH YIELD 8088U

MESSMER PACKER S008
LSF COVER GIRL K1426 R5057

STRA MISS IRON WOMAN 249

BAR R IRON MAN 806
PFFR CHERABEL 227

HB	GM	CED	BW	WW	YW	M	ME	HPG	CEM	ST	Marb	YG	CW	REA	Fat
101	51	2	-0.5	64	100	16	7	10	0	10	0.53	0.00	29	0.01	-0.03
60%	23%	83%	70%	26%	27%	76%	96%	73%	96%	41%	23%	40%	24%	64%	8%

6135 is a beautiful High Yield daughter. High Yield daughters are fantastic uddered and really turning into some awesome daughters in our herd. As you can see throughout the bulls, many were raised by High Yield daughters. On the bottom side this heifer was raised by Cherabel 227 daughter. With High Yield and Cherabel 227 in this heifer's pedigree, I don't think you can go wrong. She sells AI bred to Pie Cinch. Due 2-22-2018.

96 STRA RACHLE 6128

#3556512

BD	BW	WW	WR	Cat.	%	Dam's MPPA	Age
3/15/16	96	689	100	1A	100%	100.0	2

BIEBER FEDERALIST B543

ANDRAS FUSION R236
BASIN PRIMROSE 0T43

STRA RACHLE 432

BIEBER H HUGHES W109
BAR R MISS RED LIGHTNING 628

HB	GM	CED	BW	WW	YW	M	ME	HPG	CEM	ST	Marb	YG	CW	REA	Fat
118	51	0	3.7	69	104	20	1	12	4	11	0.60	0.16	37	-0.09	0.01
37%	21%	92%	99%	13%	20%	38%	61%	39%	50%	30%	15%	95%	8%	84%	69%

6128 is the only Federalist heifer to sell. We didn't have many Federalist daughters his first year but we decided to let one go. She is a good one. She is out of a beautiful first-calf Hughes daughter that did a great job her first year. She sells AI bred to Pie Cinch. Due 2-22-2018.

97 STRA MONA 692

#3556530

BD	BW	WW	WR	Cat.	%	Dam's MPPA	Age
2/27/16	68	689	105	1B	99.3%	101.7	6

ROUSE EPITOME A33

BECKTON EPIC R397 K
GHR FLOWER T21

BAR M MS DIRECT KING 0054

FEDDES DIRECT KING 7144
BARM LODI PRINCE 2632-3051

HB	GM	CED	BW	WW	YW	M	ME	HPG	CEM	ST	Marb	YG	CW	REA	Fat
121	50	3	-2.4	55	95	28	-2	14	5	11	0.34	0.10	24	0.14	0.04
33%	37%	69%	36%	56%	37%	2%	30%	12%	43%	34%	60%	83%	39%	35%	95%

692 is a really good Epitome daughter. She has lots of middle and lots of length. She has the look to make a great cow. She sells AI bred to Pie Just Right. Due 2-22-2018.



98 STRA COVER GIRL 6103 #3556487

BD	BW	WW	WR	Cat.	%	Dam's MPPA	Age
3/3/16	59	600	91	1A	100%	98.0	3

ROUSE EPITOME A33

BECKTON EPIC R397 K
GHR FLOWER T21

STRA COVER GIRL 325

RED SIX MILE SAKIC 832S
BAR R MISS COVER GIRL 627

HB	GM	CED	BW	WW	YW	M	ME	HPG	CEM	ST	Marb	YG	CW	REA	Fat
137	48	4	-4.7	50	81	24	1	11	7	13	0.24	0.10	12	-0.05	0.03
17%	68%	58%	8%	75%	66%	12%	57%	47%	13%	8%	82%	83%	76%	77%	92%

6103 is a moderate-framed, easy-fleshing heifer. She is going to make one heck of a cow. She is out of a SAKIC daughter that gets the job done every year. She sells AI bred to PIE CINCH 4126. 2-22-2018.

99 STRA LARS 6125 #3556456

BD	BW	WW	WR	Cat.	%	Dam's MPPA	Age
3/15/16	70	576	88	1A	100%	95.4	5

ROUSE EPITOME A33

BECKTON EPIC R397 K
GHR FLOWER T21

STRA MISS KING 116

5L NORSEMAN KING 2291
BAR R MISS LARS 508

HB	GM	CED	BW	WW	YW	M	ME	HPG	CEM	ST	Marb	YG	CW	REA	Fat
110	50	6	-3.2	47	82	22	0	12	2	10	0.32	0.03	15	0.15	0.02
48%	43%	46%	23%	83%	65%	26%	44%	27%	85%	46%	65%	55%	69%	33%	87%

6125 is a real fancy dark red Epitome heifer that is out of a Norseman King daughter that we really like. She has a beautiful udder that will surely pass on to her daughter. She sells bred to Federalist. 3-13-2018.

100 STRA MARIAS 620 #3556467

BD	BW	WW	WR	Cat.	%	Dam's MPPA	Age
2/13/16	45	570		1B	99.6%	93.5	4

ROUSE EPITOME A33

BECKTON EPIC R397 K
GHR FLOWER T21

STRA MISS LIGHTNING 231

MAJESTIC LIGHTNING 717 SGMR
BAR R MISS MAYOR LEAGUE 521

HB	GM	CED	BW	WW	YW	M	ME	HPG	CEM	ST	Marb	YG	CW	REA	Fat
110	51	0	-1.2	63	101	22	-1	11	2	11	0.38	0.12	29	0.09	0.03
48%	32%	93%	57%	30%	24%	25%	40%	56%	83%	30%	50%	89%	24%	45%	91%

620 is another terrific Epitome daughter. She was a twin to a heifer. Both heifers stuck AI so I decided to keep one and offer the one up for sale. She sells AI bred to PIE CINCH 4126. Due 2-22-2018.

101 STRA RAMBLER 688 #3556496

BD	BW	WW	WR	Cat.	%	Dam's MPPA	Age
2/26/16	72	676	103	1B	99.9%	100.7	3

ROUSE EPITOME A33

BECKTON EPIC R397 K
GHR FLOWER T21

STRA RAMBLER 317

MESSMER PACKER S008
STRA MISS KING 105

HB	GM	CED	BW	WW	YW	M	ME	HPG	CEM	ST	Marb	YG	CW	REA	Fat
118	52	4	-2.2	61	103	21	2	11	3	11	0.41	0.10	29	0.25	0.04
37%	17%	65%	39%	36%	21%	28%	65%	53%	79%	34%	43%	83%	25%	19%	96%

688 is an Epitome heifer out of a beautiful Packer daughter. This heifer is going to make one heck of a cow. She sells AI Bred to PIE CINCH 4126. Due 2-22-2018.

102 STRA REBA 622 #3556497

BD	BW	WW	WR	Cat.	%	Dam's MPPA	Age
2/12/16	87	670	102	1A	100%	100.7	3

ROUSE EPITOME A33

BECKTON EPIC R397 K
GHR FLOWER T21

STRA REBA 312

MESSMER PACKER S008
STRA VALUE STATEMENT 129

HB	GM	CED	BW	WW	YW	M	ME	HPG	CEM	ST	Marb	YG	CW	REA	Fat
120	54	-2	1.2	75	126	17	3	12	2	11	0.42	0.18	47	0.25	0.04
34%	5%	98%	92%	4%	2%	73%	80%	31%	85%	30%	41%	97%	1%	19%	96%

622 is another great Epitome heifer. You can now see the consistency of these Epitome heifers. They are all going to be long and easy keeping. 622 sells bred to Federalist. Due 4-3-2018.

103 STRA LODI-PRINCE 660 #3556463

BD	BW	WW	WR	Cat.	%	Dam's MPPA	Age
2/21/16	63	608	92	1A	100%	101.5	5

LJC MISSION STATEMENT P27

LJC LANCER 806
LJC HANNAH 106

STRA EPIC 192

MLK CRK EPIC 8171
BAR R VALUE HIGH 914

HB	GM	CED	BW	WW	YW	M	ME	HPG	CEM	ST	Marb	YG	CW	REA	Fat
129	52	6	-3.5	54	91	20	6	12	3	12	0.45	-0.10	19	0.39	-0.01
24%	16%	47%	19%	62%	46%	39%	95%	28%	69%	23%	35%	10%	54%	9%	38%

660 is the only Mission Statement daughter. There aren't too many of these left for sale around the country. She wouldn't have been either but she slipped outside our calving window. She sells bred to Federalist. 5-15-2018.

104 STRA CHERABEL 661 #3556558

BD	BW	WW	WR	Cat.	%	Dam's MPPA	Age
2/21/16	79	633	ET	1A	100%	106.7	14

BIEBER ROOSEVELT W384

BIEBER ROUGH RIDER 10712
BIEBER SHEBA 9602

PFFR CHERABEL 227

BADLANDS CUT ABOVE 012
SBCC CHERABEL L-419

HB	GM	CED	BW	WW	YW	M	ME	HPG	CEM	ST	Marb	YG	CW	REA	Fat
99	48	1	1.9	58	84	20	-8	12	0	11	0.35	0.12	23	-0.13	0.01
63%	74%	90%	96%	45%	61%	44%	3%	35%	95%	38%	57%	89%	43%	90%	72%

661 is sad a one to see go. She is a beautiful Cherabel daughter out of the great Bieber Roosevelt. She is going to make a great cow. She sells bred to Federalist. Due 4-24-2018.

106 STRA CANYON 6112 #3556466

BD	BW	WW	WR	Cat.	%	Dam's MPPA	Age
3/11/16	85	699	106	1B	99.5%	103.6	4

LSF HIGH YIELD 8088U

MESSMER PACKER S008
LSF COVER GIRL K1426 R5057

STRA WORTH A LOT 204

BADLANDS NET WORTH 23U
BAR R MISS G.CANYON 029

HB	GM	CED	BW	WW	YW	M	ME	HPG	CEM	ST	Marb	YG	CW	REA	Fat
86	52	-3	2.0	71	113	16	4	12	4	8	0.54	0.06	40	0.04	-0.02
77%	17%	99%	96%	8%	9%	78%	85%	30%	64%	77%	22%	69%	5%	57%	15%

6112 is another High Yield daughter. This is the last of the High Yield daughters we will have for sale ever. Don't miss the opportunity to own one. You won't regret it. She sells bred to Federalist. Due 3-13-2018.

105 CER MS. WILHELMINA 607D #3566248

BD	BW	WW	WR	Cat.	%	Dam's MPPA	Age
2/19/16	61	609	90	1A	100%	96.0	3

BRYLOR WRAZ MAKN WAVES 39X

BIEBER MAKIN HAY 9913
RED BRYLOR CHEROK 19U

WCR MISS KURUBA 102A

RED COCKBURN RIBEYE 308U
WSF MS ALICIA 136W

HB	GM	CED	BW	WW	YW	M	ME	HPG	CEM	ST	Marb	YG	CW	REA	Fat
124	49	6	-3.2	45	71	15	-4	11	4	12	0.33	-0.16	8	0.11	-0.05
29%	60%	42%	23%	87%	82%	84%	16%	52%	50%	20%	62%	6%	85%	41%	5%

607D is a heifer we purchased from the Cutting Edge Ranch this spring and has unfortunately fallen outside our calving window so we are offering her to you today. She is a beautiful heifer. She sells bred to Federalist. Due 4-29-2018.

107 STRA TOP DAY 650 #3556436

BD	BW	WW	WR	Cat.	%	Dam's MPPA	Age
2/20/16	81	681	104	1A	100%	98.3	9

BIEBER ROOSEVELT W384

BIEBER ROUGH RIDER 10712
BIEBER SHEBA 9602

RRHR MISS TOP DAY 735

BIEBER TOP VALUE 10088
HLG MISS MAKE MY DAY 229

HB	GM	CED	BW	WW	YW	M	ME	HPG	CEM	ST	Marb	YG	CW	REA	Fat
87	48	2	-0.2	57	84	14	-4	13	2	8	0.49	0.15	20	-0.09	0.03
76%	67%	79%	75%	51%	60%	89%	18%	25%	86%	73%	28%	94%	52%	84%	91%

650 is a real fancy Bieber Roosevelt Daughter. She is out of a super easy-fleshing dam that always sticks AI. She is going to make a great cow. Sells bred to Federalist. Due 3-13-2018.

RED

RIGHT. NOW.

The Red Angus female is the rancher favorite for replacements that deliver real profitability.

An independent university study compared six years of Superior Livestock Auction data, revealing Red Angus-sired heifers commanded from \$5 to \$9/cwt. more than females of all other breed types.

Learn more about the value of Red Angus-sired replacement females at
redangus.org.

Ranch Tested. Rancher Trusted.

Red Angus

108 45 Commercial Red Angus x Simmental Open Heifers

These heifers are about as uniform group of open heifers as you will find. They were hand-picked to out of a group of about 110 heifers. The heifers were selected from the commercial side of our operation that my dad, Gerald Twedt runs. These heifers are out of Twedt Red Angus bulls as well as a few Simmental bulls that were used. These heifers will make an excellent group of cows. The heifers are tagged 701-745. The buyer takes a minimum of 5 head and can take the whole group. Heifers will sell in order of tag. These heifers have been Bangs vaccinated, Preg checked and are breedable.



109 40 Commercial Purebred Angus Open Heifers

This complete set of stylish heifers is hard not to get excited about. They are direct daughters from top end of our commercial females. The dams of these heifers raise a consistent type season after season, steers that perform and heifers that are maternal. These stout profiled brood cow prospects will be a profitable contribution to any aspect of the beef industry. Many of these females could see success in the show ring before making a lasting impact through their production career in your herd.

This group of heifers was fed a balanced ration of hay, corn silage, dry distillers, and a complete mineral package. This custom ration allowed for the heifers to slowly mature in order to insure their longevity and more milk capacity. In the beginning of January they vet checked open, bangs vaccinated, poured and weighed with an average weight of 813 lbs.



Sam Twedt
2061 95th Ave NE
McHenry, ND 58464

PRESORTED
FIRST CLASS
US POSTAGE PAID
UNITED PRINTNG

RETURN SERVICE REQUESTED

Twedt
RED ANGUS

RR
Ressler Angus Ranch

*Annual
Bull Sale*

Tuesday, February 6, 2018

1 p.m. • At the Ranch • McHenry, ND

9 miles N. of McHenry, 2 miles E. and 1/2 mile N.

DVAuction Broadcasting
Real-time Auctions



"Like" us on
Facebook/
Twedt Red
Angus
and
Ressler Ranch

