

Online EMBRYO Sale

Opens: Tuesday, April 6, 2021 • 12 p.m. CDT

Closes: Wednesday, April 7, 2021 • 7 p.m. CDT

Featuring:

70 Embryos from Twedt Red Angus
40 Embryos from Boot Jack Red Angus

DVAuction Broadcasting
Real-time Auctions

Sires Include:

U2 TOWNSHIP
MINBURN COPENHAGEN 3Y
U2 BLUE COLLAR
CRUMP SUPREME 7813
STRA GENERAL 882
RREDS SENECA 731C

PIE CINCH 4126
STRA RELENTLESS
BIEBER STOCKMARKET E119
BIEBER ENERGIZE F121
3SCC DOMAIN A163
EGL GUIDANCE 9117



Bieber Laura 158W



Larson Flo Marie 245-369



Bieber Dateline 308Y



Bieber Belga 345X



NSFR MTX W14



TBJR lone 413



C-Bar Stony 818F



BJR Abigrace 805F



TBJR Dina 306



STRA Laura 718



BJR Dory Jiba 902G



BJR Essence 904G



BJR Copper Queen 801F



Paul C. Haugen

406-366-2855 • bootjack@middrivers.com
232 Cedar St. • Lewistown, MT 59457

Twedt
RED ANGUS

Sam Twedt

C: (701) 388-4035
H: (701) 262-4768

twedtredangus@hotmail.com
www.twedtredangus.com

2061 95th Ave NE • McHenry, ND 58464



3 3 IVF EMBRYOS

BIEBER LAURA 158W X RED U2 BLUE COLLAR 295E

ProS	HB	GM	TWEDT RED ANGUS												
155	94	61	STORED AT BOVAGEN EMBRYO TRANSFER CENTER, BRITTON, SD												
14%	36%	43%													
CED	BW	WW	YW	ADG	DMI	M	ME	HPG	CEM	ST	MARB	YG	CW	REA	FAT
11	0.3	71	114	0.27	1.92	29	-5	11	8	16	0.6	0.07	37	0.29	0.02
54%	72%	15%	19%	27%	90%	24%	36%	53%	32%	50%	28%	54%	28%	34%	51%

RED U2 BLUE COLLAR 295E

RED U-2 RECKONING 149A
RED U-2 ANEXA 439A

RED U-2 RECON 192Y
RED U-2 ANEXA 271Y
RED MINBURN COPENHAGEN 3Y
RED U-2 ANEXA 443Y

BIEBER LAURA 158W

LJC MISSION STATEMENT P27
BASIN LAURA 5301

LJC LANCER 806
LJC HANNAH 106
C A FUTURE DIRECTION 5321
BASIN LAURA 3673

U2 Blue Collar is another sire that is starting to leave his mark on the breed. We feel this mating is really going to click. U2 Blue Collar was the \$76,000 bull that sold to Rust Mountain.



RED U2 BLUE COLLAR 295E

4 3 IVF EMBRYOS

BIEBER LAURA 158W X CRUMP FORERUNNER 6601

ProS	HB	GM	TWEDT RED ANGUS												
159	84	76	STORED AT BOVAGEN EMBRYO TRANSFER CENTER, BRITTON, SD												
9%	43%	18%													
CED	BW	WW	YW	ADG	DMI	M	ME	HPG	CEM	ST	MARB	YG	CW	REA	FAT
16	-2.8	71	119	0.31	1.92	30	4	12	10	15	0.66	0.06	41	0.32	0.01
12%	33%	16%	11%	9%	90%	22%	70%	43%	11%	57%	17%	51%	18%	28%	43%

CRUMP FORERUNNER 6601

CRUMP PACESETTER 491
MDM SUSIE 133-9

5L MTN SIGN 435-10Z
MDM VERNICE 1020
LJC JAVELIN M08
MDM SUSIE 91-6

BIEBER LAURA 158W

LJC MISSION STATEMENT P27
BASIN LAURA 5301

LJC LANCER 806
LJC HANNAH 106
C A FUTURE DIRECTION 5321
BASIN LAURA 3673

The last mating is to Crump Forerunner 6601 who is one of our herd bulls. Forerunner has put some awesome daughters back in our program and we feel this mating is really going click. Don't miss out on this opportunity to put embryos in out of truly one of the great cows in the breed.



CRUMP FORERUNNER 6601



BIEBER DEEP END B597, son



BIEBER GLADIATOR C386, son



BIEBER HARD DRIVE Y120, son



LAURA son



LAURA son



LAURA son



STRA LAURA 718, daughter



LAURA daughter



LAURA daughter



LAURA daughter

Larson Flo - Marie 245 - 369



LARSON FLO-MARIE 245-369

Larson Flo-Marie 245-369 was a cow we purchased from VF Red Angus in 2018 for \$15,000. Flo-Marie has been an outstanding cow for us. We are calving our first daughters this spring and they are awesome cows – beautifully uddered and easy fleshing. Her Hard Drive son this winter was the second-high-selling bull for \$20,000 at our annual production sale.

5 3 CONVENTIONAL EMBRYOS LARSON FLO-MARIE 245-369 X RED U2 TOWNSHIP 17G

ProS		HB	GM	TWEDT RED ANGUS																
112	77	35	STORED AT BOVAGEN EMBRYO TRANSFER CENTER, BRITTON, SD																	
56%	57%	50%																		
CED	BW	WW	YW	ADG	DMI	M	ME	HPG	CEM	ST	MARB	YG	CW	REA	FAT					
12	-0.8	59	96	0.23	1.5	27	-3	13	7	14	0.37	0.06	18	0.07	0.01	52%	64%			
52%	64%	49%	44%	38%	60%	43%	45%	22%	49%	74%	55%	50%	50%	51%	47%					

RED U2 TOWNSHIP 17G

- RED MRLA RESOURCE 137E
- U2 BEAUTY 113Z
- MRLA RELOAD 56C
- MRLA MISS 4422B
- RED U-2 MAMA'S BOY 167X
- RED U-2 BEAUTY 48X
- BECKTON NEBULA P P707
- LARSON SUN KING 016
- LARSON FLO-MARIE 245-369
- LARSON FLO-MARIE 369-18
- LARSON TAMARA 545-556
- LCHMN HEVN'S SAKE 1002F
- LARSON FLO-MARIE 185

LARSON FLO-MARIE 245-369

First set of embryos we are offering is out of the \$115,000 U2 Township. We feel this mating is going to be outstanding.



RED U2 TOWNSHIP 17G

6 5 CONVENTIONAL EMBRYOS LARSON FLO-MARIE 245-369 X BIEBER DRIVEN C540

ProS		HB	GM	TWEDT RED ANGUS																
146	93	53	STORED AT BOVAGEN EMBRYO TRANSFER CENTER, BRITTON, SD																	
21%	25%	26%																		
CED	BW	WW	YW	ADG	DMI	M	ME	HPG	CEM	ST	MARB	YG	CW	REA	FAT					
13	-2.2	70	110	0.25	1.89	30	7	12	9	17	0.61	0.07	31	0.29	0.03	39%	39%			
39%	39%	23%	24%	30%	88%	17%	86%	41%	13%	41%	15%	53%	31%	37%	71%					

BIEBER DRIVEN C540

- BIEBER HARD DRIVE Y120
- BIEBER JOAN 309Y
- LARSON SUN KING 016
- LARSON FLO-MARIE 245-369
- LARSON FLO-MARIE 369-18
- LACY GOLD BAR 8123
- BIEBER LAURA 158W
- LCOC HIGH NOON A093R
- BIEBER JOAN 7502
- BECKTON NEBULA P P707
- LARSON TAMARA 545-556
- LCHMN HEVN'S SAKE 1002F
- LARSON FLO-MARIE 185

LARSON FLO-MARIE 245-369

Bieber Driven C540 has been a program-changing sire for us. The daughters out of Driven are second to none. They are perfect uddered, super mothers and are always at the top in performance.



BIEBER DRIVEN C540

Bieber Primrose 107W



BIEBER PRIMROSE 107W

Bieber Primrose 107W has truly been a herd-changing cow for our program. She has left many daughters behind in our program. The Primrose line has been one of the top cow lines in the breed and we truly feel 107W is one of the best. She is the dam of STRA General 882 whose sons just averaged \$9,000 in our bull sale in 2021. She ranks top 7% for ProS and top 2% for HB.

8 5 CONVENTIONAL EMBRYOS BIEBER PRIMROSE 107W X PIE THE COWBOY KIND 343

ProS	HB	GM	TWEDT RED ANGUS																
141	85	56	STORED AT BOVAGEN EMBRYO TRANSFER CENTER, BRITTON, SD																
18%	46%	27%																	
CED	BW	WW	YW	ADG	DMI	M	ME	HPG	CEM	ST	MARB	YG	CW	REA	FAT				
13	-1.9	57	95	0.24	1.5	27	2	10	8	18	0.54	0.04	24	0.13	0.01				
45%	49%	59%	51%	47%	59%	35%	52%	79%	36%	44%	21%	45%	40%	37%	50%				

PIE THE COWBOY KIND 343

- BUF CRK THE RIGHT KIND U199
- BUF CRK LANCER R017
- BUF CRK SHOSHONE R353
- PIE CASCADE 561
- PIE CODE RED 9058
- TPIE CASCADE 561
- BASIN HOBO 0545
- BASIN HOBO 79E
- BASIN ERICA 330E
- BASIN TREND SETTER 6074
- BASIN PRIMROSE 24T9
- BASIN PRIMROSE 2043

We think the Pie The Cowboy Kind 343 mating is really going to click with Bieber Primrose 107W.



PIE THE COWBOY KIND 343

9 3 CONVENTIONAL EMBRYOS BIEBER PRIMROSE 107W X CRUMP SUPREME 7813

ProS	HB	GM	TWEDT RED ANGUS																
133	95	38	STORED AT BOVAGEN EMBRYO TRANSFER CENTER, BRITTON, SD																
29%	33%	44%																	
CED	BW	WW	YW	ADG	DMI	M	ME	HPG	CEM	ST	MARB	YG	CW	REA	FAT				
10	-0.7	83	130	0.29	2.09	28	8	13	6	19	0.52	0.1	26	0.16	0.03				
52%	53%	40%	42%	44%	77%	27%	64%	44%	50%	35%	24%	67%	37%	33%	63%				

CRUMP SUPREME 7813

- PIE ONE OF A KIND 352
- MLK CRK SHEBA 048
- BASIN HOBO 0545
- BASIN PRIMROSE 24T9
- BUF CRK THE RIGHT KIND U199
- PIE FAYETTE 1160
- 5L BLAZIN TRAIL 1336-237V
- MLK CRK SHEBA 748
- BASIN HOBO 79E
- BASIN ERICA 330E
- BASIN TREND SETTER 6074
- BASIN PRIMROSE 2043

Crump Supreme 7813 is our high-growth herd sire. When you add Primrose's calving ease and Supreme's growth, who ranks in the top 1% for WW and YW, you're going to get some awesome sons or daughters.



CRUMP SUPREME 7813

Bieber Primrose 107W



BIEBER PRIMROSE son



BIEBER PRIMROSE son



BIEBER PRIMROSE son



BIEBER PRIMROSE son



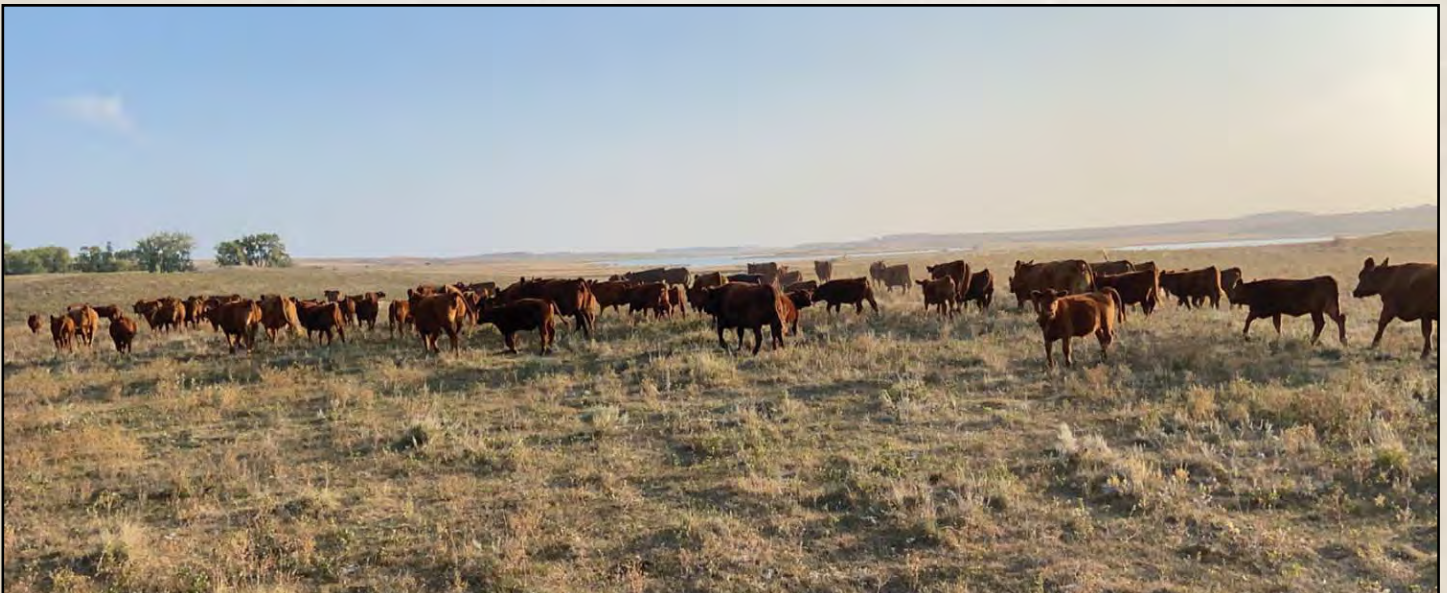
BIEBER PRIMROSE daughter



BIEBER PRIMROSE daughter



BIEBER PRIMROSE granddaughter



12 5 IVF EMBRYOS

BIEBER DATELINE 308Y X PIE CINCH 4126

ProS HB GM TWEDT RED ANGUS

85 73 13 STORED AT BOVAGEN EMBRYO TRANSFER CENTER, BRITTON, SD

87% 61% 82%

CED	BW	WW	YW	ADG	DMI	M	ME	HPG	CEM	ST	MARB	YG	CW	REA	FAT
14	-3	73	114	0.26	1.61	26	1	10	5	16	0.14	0.11	22	0.02	0.03
31%	27%	11%	14%	24%	69%	43%	51%	70%	84%	49%	89%	65%	36%	55%	63%

PIE CINCH 4126

LSF SAGA 1040Y

TKP BONNE BEL 110

BIEBER DATELINE 308Y

HUST CHIEF SEQUOYA R336

BASIN ROSE 7127

BECKTON EPIC R397 K
LSF MINOLA T7172 W9041
HXC CONQUEST 4405P
TKP BONNE BEL 9031
CCF SEQUOYA 0361
LCC REBELLA NA123
BASIN CHEROKEE 4246
BASIN ROSE 1938

PIE Cinch has been a bull we have used heavily in our program with great success. We feel this mating will work really good.



PIE CINCH 4126

13 5 IVF EMBRYOS

BIEBER DATELINE 308Y X CRUMP SUPREME 7813

ProS HB GM TWEDT RED ANGUS

100 66 34 STORED AT BOVAGEN EMBRYO TRANSFER CENTER, BRITTON, SD

70% 74% 53%

CED	BW	WW	YW	ADG	DMI	M	ME	HPG	CEM	ST	MARB	YG	CW	REA	FAT
8	0.2	95	150	0.34	2.24	28	11	13	3	15	0.36	0.06	31	0.22	0.02
60%	60%	3%	5%	10%	91%	28%	87%	42%	95%	60%	57%	47%	18%	22%	43%

CRUMP SUPREME 7813

PIE ONE OF A KIND 352

MLK CRK SHEBA 048

BIEBER DATELINE 308Y

HUST CHIEF SEQUOYA R336

BASIN ROSE 7127

BUF CRK THE RIGHT KIND U199
PIE FAYETTE 1160
5L BLAZIN TRAIL 1336-237V
MLK CRK SHEBA 748
CCF SEQUOYA 0361
LCC REBELLA NA123
BASIN CHEROKEE 4246
BASIN ROSE 1938

If you want powerful, high-growth cattle, this Crump Supreme mating will really work for you.



CRUMP SUPREME 7813

14 5 IVF EMBRYOS

BIEBER DATELINE 308Y X BIEBER FEDERALIST B543

ProS HB GM TWEDT RED ANGUS

136 88 48 STORED AT BOVAGEN EMBRYO TRANSFER CENTER, BRITTON, SD

44% 43% 37%

CED	BW	WW	YW	ADG	DMI	M	ME	HPG	CEM	ST	MARB	YG	CW	REA	FAT
13	-1.3	67	105	0.24	1.44	28	4	9	6	19	0.58	0.12	26	0.02	0.03
45%	54%	28%	32%	38%	56%	26%	71%	83%	60%	27%	40%	67%	27%	55%	63%

BIEBER FEDERALIST B543

ANDRAS FUSION R236

BASIN PRIMROSE 0T43

BIEBER DATELINE 308Y

HUST CHIEF SEQUOYA R336

BASIN ROSE 7127

ANDRAS IN FOCUS B175
ANDRAS BELLE B167
BASIN TREND SETTER 6074
BASIN PRIMROSE 2043
CCF SEQUOYA 0361
LCC REBELLA NA123
BASIN CHEROKEE 4246
BASIN ROSE 1938

Bieber Federalist is a bull we purchased with Genex. He is a true cow maker. If you want some awesome daughters, this mating will work great.



BIEBER FEDERALIST B543



BIEBER DATELINE daughter



BIEBER CL ATOMIC C218, son



BIEBER DATELINE son



BIEBER DATELINE son



BIEBER DATELINE son

NSFR MTX W14



NSFR MTX W14 is a cow that flat out gets the job done. She was born and raised at Nordlund Stock Farm where she was purchased by Rust Mountain View Ranch. She was a donor at Rust Mountain for many years before we

acquired her. The MTX cow family is a true cow-maker family. The daughters we have in our herd are outstanding. She also raises awesome sons with her PIE Cinch son topping the sale in 2020 to Weber Red Angus and Charolais.

15 5 IVF EMBRYOS NSFR MTX W14 X STRA RELENTLESS

ProS	HB	GM	TWEDT RED ANGUS												
126	101	25	STORED AT BOVAGEN EMBRYO TRANSFER CENTER, BRITTON, SD												
43%	14%	62%													
CED	BW	WW	YW	ADG	DMI	M	ME	HPG	CEM	ST	MARB	YG	CW	REA	FAT
18	-4.7	53	80	0.17	1.27	30	5	11	12	19	0.57	0.08	6	-0.07	0.03
10%	16%	73%	79%	82%	46%	30%	76%	58%	8%	13%	44%	61%	71%	66%	68%

STRA RELENTLESS

BIEBER DRIVEN C540
BIEBER HARD DRIVE Y120
BIEBER JOAN 309Y
LARSON SUN KING 016
STRA MISS TRACKER 141
RED SIX MILE AVIATOR 217P
RED SIX MILE SIERA 257P
FORSTER KING ROB 9028
LMG MTX 672-827

NSFR MTX W14

LMG MTX 3032

Relentless is turning into a great bull – a true calving-ease and cow-maker sire. We think this mating will be really good.



STRA RELENTLESS

16 5 IVF EMBRYOS NSFR MTX W14 X RED U2 BLUE COLLAR 295E

ProS	HB	GM	TWEDT RED ANGUS												
114	107	8	STORED AT BOVAGEN EMBRYO TRANSFER CENTER, BRITTON, SD												
52%	11%	91%													
CED	BW	WW	YW	ADG	DMI	M	ME	HPG	CEM	ST	MARB	YG	CW	REA	FAT
11	-0.3	58	89	0.19	1.29	28	-6	8	8	21	0.29	0.09	4	-0.16	0.02
57%	63%	55%	60%	67%	46%	33%	34%	85%	34%	7%	71%	66%	77%	83%	63%

RED U2 BLUE COLLAR 295E

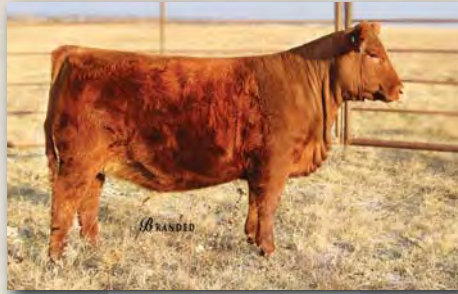
RED U-2 RECKONING 149A
RED U-2 ANEXA 439A
RED U-2 ANEXA 271Y
RED MINBURN COPENHAGEN 3Y
RED U-2 ANEXA 443Y
RED SIX MILE AVIATOR 217P
RED SIX MILE SIERA 257P
FORSTER KING ROB 9028
LMG MTX 672-827

NSFR MTX W14

We think the U2 Blue Collar mating on this cow is really going to work well.



RED U2 BLUE COLLAR 295E



NSFR MTX daughter



NSFR MTX daughter



NSFR MTX son



NSFR MTX son



NSFR MTX son



NSFR MTX son



NSFR MTX son



Bieber Belga 345X



Bieber Belga 345X was a cow we purchased from Biebers. She started her career with us by raising one of our high sellers, STRA Hercules, to Nordlund Stock Farm. Hercules is doing an awesome job for them. She ranks in the top 1% for HB and 7% for PROS. She has a 108 MPPA. Belga is making a difference in our program and I know she can do it in yours too.

We are selling 5 embryos each by U2 Blue Collar and RREDS Seneca. Both of these matings should really work great. I don't think you can go wrong with either one.

17 5 CONVENTIONAL EMBRYOS BIEBER BELGA 345X X RREDS SENECA 731C

ProS	HB	GM	TWEEDT RED ANGUS												
116	110	6	STORED AT BOVAGEN EMBRYO TRANSFER CENTER, BRITTON, SD												
47%	16%	95%													
CED	BW	WW	YW	ADG	DMI	M	ME	HPG	CEM	ST	MARB	YG	CW	REA	FAT
15	-2.4	63	101	0.24	1.7	24	-1	13	8	20	0.03	0.11	23	0.24	0.05
34%	36%	43%	40%	38%	73%	53%	38%	33%	46%	10%	99%	71%	36%	20%	91%

RREDS SENECA 731C

BIEBER ROLLIN DEEP Y118
BIEBER ROOSEVELT W384
BIEBER TILLY 399W
BECKTON EPIC R397 K
MLK CRK ASTER 175
BASIN TREND SETTER 6074
BIEBER ADELLE 8958
OLC VALOR N131
OLC BELGA L407

BIEBER BELGA 345X



RREDS SENECA 731C

18 5 CONVENTIONAL EMBRYOS BIEBER BELGA 345X X RED U2 BLUE COLLAR 295E

ProS	HB	GM	TWEEDT RED ANGUS												
136	124	11	STORED AT BOVAGEN EMBRYO TRANSFER CENTER, BRITTON, SD												
21%	2%	90%													
CED	BW	WW	YW	ADG	DMI	M	ME	HPG	CEM	ST	MARB	YG	CW	REA	FAT
12	-0.1	61	95	0.21	1.7	30	-10	11	10	21	0.19	0.09	18	0.09	0.03
51%	66%	48%	50%	53%	73%	13%	9%	56%	27%	5%	77%	65%	50%	46%	80%

RED U2 BLUE COLLAR 295E

RED U-2 RECKONING 149A
RED U-2 ANEXA 271Y
RED MINBURN COPENHAGEN 3Y
RED U-2 ANEXA 443Y
BASIN TREND SETTER 6074
BIEBER ADELLE 8958
OLC VALOR N131
OLC BELGA L407

BIEBER BELGA 345X



RED U2 BLUE COLLAR 295E



BIEBER BELGA daughter



BIEBER BELGA daughter



BIEBER BELGA daughter



BIEBER BELGA daughter



BIEBER BELGA son



BIEBER BELGA son



BIEBER BELGA son



BIEBER BELGA son

BJR Dory Jiba 902G



BJR DORY JIBA 902G

19 3 CONVENTIONAL EMBRYOS

BJR DORY JIBA 902G X BIEBER CL STOCKMARKET E119

ProS HB GM **BOOT JACK RANCH**
173 102 71 STORED AT GENEX, BILLINGS, MT

6%	11%	11%																	
CED	BW	WW	YW	ADG	DMI	M	ME	HPG	CEM	ST	MARB	YG	CW	REA	FAT				
14	-4.2	69	111	0.27	1.91	28	8	13	10	18	0.96	0	24	0.43	0.03				
38%	15%	20%	20%	24%	88%	27%	91%	30%	28%	17%	1%	31%	43%	14%	59%				

BIEBER CL STOCKMARKET E119	PIE STOCKMAN 4051	LSF SAGA 1040Y
	BIEBER CL ADELLE 475C	PIE LAKOTA 046
BJR DORY JIBA 902G	BIEBER HARD DRIVE Y120	ANDRAS FUSION R236
	TBJR DORY JIBA 460	BIEBER ADELLE 297Y
		LACY GOLD BAR 8123
		BIEBER LAURA 158W
		LSF BOXED BEEF 9063W
		SRR DORY-JIBA 0121-663



TBJR DORY JIBA 460
 (dam of DORY JIBA 902G &
 maternal sister to the \$100,000 Takeback)



BIEBER CL STOCKMARKET E119 (sire of embryos)

Elite Data sort of BW, YW, MK, MB, REA of this mating results in NO MATCHES. The Dory Jiba 902G with the same sort only results 902G in the entire Red Angus Database. 902G's dam is a maternal sister to the \$100,000 Takeback bull that scanned an 8.43 for marbling! 902G is a special BJR donor that these are the first embryos offered. Her natural calf is an outstanding heifer calf of this exact mating + BJR is implanting embryos by this mating this spring!

Stockmarket @ Bieber's Sale had 47 sons average \$8,989 with 5 ranging from \$18,500 to \$30,000! With 494 progeny registered, his elite data checks all the boxes with EPD rankings in top 1-30% for ProS, HB, GM, CED, BW, WW, YW, ADG, MK, CEM, STAY, MARB, & REA!



STRA LAURA 718

20 3 CONVENTIONAL EMBRYOS
STRA LAURA 718 X STRA RELENTLESS

ProS	HB	GM	BOOT JACK RANCH																			
168	96	72	STORED AT GENEX, BILLINGS, MT																			
5%	24%	13%																				
CED	BW	WW	YW	ADG	DMI	M	ME	HPG	CEM	ST	MARB	YG	CW	REA	FAT							
18	-4.3	64	97	0.21	1.74	32	5	13	12	16	0.97	0.15	35	0.17	0.04							
10%	24%	36%	44%	52%	79%	13%	74%	28%	4%	49%	1%	82%	22%	30%	88%							

Laura 718 is the #1 Marbling offspring of the legendary Laura 158W that also produced Hard Drive, Deep End @ Genex, and \$64,000 Gladiator. Laura 718's daughter Laura 912G is also the #1 Marbling offspring of her sire, Seneca! Imagine the result of these embryos at .98 Marbling. But that is far from what this package offers ranking in the top 1-35% for ProS, HB, GM, CED, BW, WW, MK, HPG, CEM, STAY, MARB, & CW! These are the last embryos of this mating available, and I feel the dimension and shape of this mating will be impressive with a nice data package to build on.

STRA RELENTLESS

- BIEBER DRIVEN C540
- STRA CHEREBAL 305
- BIEBER FEDERALIST B543
- BIEBER LAURA 158W
- BIEBER HARD DRIVE Y120
- BIEBER JOAN 309Y
- LARSON SUN KING 016
- STRA MISS TRACKER 141
- ANDRAS FUSION R236
- BASIN PRIMROSE 0T43
- LJC MISSION STATEMENT P27
- BASIN LAURA 5301

STRA LAURA 718

Relentless is a popular sire at ST Genetics for body dimension in an elite calving ease package, outstanding milk, and marbling. He ranks in the Top 1-7% for ProS, HB, CED, BW, Mk, CEM, and Marbling!! His dam has a 105 MPPA, his MGDam has a 108 MPPA, and the MGGDam has a 107 MPPA. That is maternal production that you can count on!!



STRA RELENTLESS (sire of embryos)



BJR LAURA 912G
(SENECA daughter of LAURA 718)



BIEBER HARD DRIVE Y120
(Maternal brother to LAURA 718)



BIEBER LAURA 158W
(\$30,000 dam of LAURA 718)

TBJR Ione 413



TBJR IONE 413

The beautiful Ione 413 has always been a fan favorite for her volume and stature with a fantastic frontend and perfect udder. We lost her in December, so the embryos are limited out of her.

21 4 CONVENTIONAL EMBRYOS

TBJR IONE 413 X 3SCC DOMAIN A163

BOOT JACK RANCH															
ProS	HB	GM	STORED AT GENEX, BILLINGS, MT												
129	76	54													
38%	53%	18%													
CED	BW	WW	YW	ADG	DMI	M	ME	HPG	CEM	ST	MARB	YG	CW	REA	FAT
13	-2.3	60	97	0.24	1.23	24	0	14	4	17	0.64	0.12	19	0.11	0.04
46%	38%	48%	45%	43%	36%	58%	43%	19%	91%	48%	10%	62%	49%	41%	83%

3SCC DOMAIN A163

BECKTON DOMINOR T122 Z1	BECKTON DOMINOR Z1 R610
3SCC EUCLA X723	BKT LARKABEL R038 WA
	BASIN HOBO 0545
	BSKF EUCLA U278
	HXC CONQUEST 4405P
LSF TAKEOVER 9943W	LSF WIDELoad R5014 U8061
SRR IONE 101	TR EPIC ST618
	SRR KIMA 977-308

TBJR IONE 413

These are the last of the Domain embryos. BJR sold a package last year at the Iowa Beef Expo to Garth Griffin and he has reported that he got 2 beautiful females.

Domain has 3,520 progeny registered proving his EPDs ranking in top 1-35% for ProS, HB, GM, CED, YW, ADG, ME, HPG, STAY, & MARB! He also adds dimension and type to his offspring! BJR has daughters entering the donor program.



3SCC DOMAIN A163 (sire of embryos)

22 3 CONVENTIONAL EMBRYOS

TBJR IONE 413 X BIEBER CL ENERGIZE F121

BOOT JACK RANCH															
ProS	HB	GM	STORED AT GENEX, BILLINGS, MT												
136	73	63													
36%	57%	11%													
CED	BW	WW	YW	ADG	DMI	M	ME	HPG	CEM	ST	MARB	YG	CW	REA	FAT
14	-4.7	63	104	0.26	1.54	28	3	13	8	14	0.63	0.05	27	0.32	0.03
34%	12%	38%	35%	34%	56%	31%	60%	33%	49%	61%	10%	42%	34%	14%	74%

BIEBER CL ENERGIZE F121

BIEBER CL ATOMIC C218	ANDRAS FUSION R236
BIEBER CL ADELLE 575D	BIEBER DATELINE 308Y
	BIEBER HARD DRIVE Y120
	BIEBER ADELLE 297Y
	HXC CONQUEST 4405P
LSF TAKEOVER 9943W	LSF WIDELoad R5014 U8061
SRR IONE 101	TR EPIC ST618
	SRR KIMA 977-308

TBJR IONE 413

Ione 413's last flush was to Energize. These are the first Energize embryos that we have sold.

Energize @ ABS is a data leader ranking in top 3-28% PROS, HB, GM, CED, BW, WW, YW, ADG, MK, CEM, STAY, MARB, CW, & REA! He has all the bases covered and reports of his first calves are exciting! Note that his MGDam is the same as the MGDam of the popular Stockmarket!



BIEBER CL ENERGIZE F121 (sire of embryos)



C-BAR-RJ STONY 818F

The stylish Stony 818F has outstanding type and pedigree of elite females. Her MGDam [W909] is a full sister to Stony W914 and W928 producing greats such as Stony A302 [the C-Bar front cover female and embryos have demanded over \$3,000 per embryo], Stony A305, Legit [scanned a 10.23 for marbling], Eldorado to name a few. Boot Jack has 4 daughters out of Stony

818F including BJR Stony 012H that when sorted by BW, YW, MK, MB, REA = only 6 in the entire database. The Stony 818F embryos in this event are the last from the BJR inventory. Stony 818F has sold to our great friends at Murray Hay & Cattle for their donor program.

23 3 CONVENTIONAL EMBRYOS

C-BAR-RJ STONY 818F X BIEBER CL ENERGIZE F121

ProS	HB	GM	BOOT JACK RANCH												
132	71	61	STORED AT GENEX, BILLINGS, MT												
42%	58%	14%													
CED	BW	WW	YW	ADG	DMI	M	ME	HPG	CEM	ST	MARB	YG	CW	REA	FAT
17	-5.8	61	104	0.27	1.81	26	2	12	9	13	0.67	0.06	24	0.21	0.03
10%	4%	45%	35%	25%	82%	45%	54%	38%	20%	63%	8%	47%	45%	37%	63%

BIEBER CL ENERGIZE F121	BIEBER CL ATOMIC C218	ANDRAS FUSION R236
	BIEBER CL ADELLE 575D	BIEBER DATELINE 308Y
		BIEBER HARD DRIVE Y120
		BIEBER ADELLE 297Y
		BUF CRK THE RIGHT KIND U199
C-BAR-RJ STONY 818F	5L INDEPENDENCE 560-298Y	5L BLACK ADINA 525-560
	C-BAR-RJ STONY 659D	C-BAR CONTOUR 107X
		C-BAR STONY W909

Energize @ ABS is a data leader ranking in top 3-28% PROS, HB, GM, CED, BW, WW, YW, ADG, MK, CEM, STAY, MARB, CW, & REA! He has all the bases covered and reports of his first calves are exciting! Note that his MGDam is the same as the MGDam of the popular Stockmarket!

24 4 CONVENTIONAL EMBRYOS

C-BAR-RJ STONY 818F X EGL GUIDANCE 9117

ProS	HB	GM	BOOT JACK RANCH												
122	62	61	STORED AT GENEX, BILLINGS, MT												
43%	76%	13%													
CED	BW	WW	YW	ADG	DMI	M	ME	HPG	CEM	ST	MARB	YG	CW	REA	FAT
15	-2.9	64	108	0.28	2.02	26	-1	12	9	11	0.71	0.09	25	0.11	0.02
29%	40%	37%	29%	21%	85%	43%	34%	39%	22%	93%	4%	64%	42%	43%	65%

EGL GUIDANCE 9117	MCD SPUR 6111	SPUR FRANCHISE OF GARTON
	AHL DUCHESS 427B	MCD-2 RITOESS 3155
		BROWN JYJ REDEMPTION Y1334
		AHL DUCHESS 9U
		BUF CRK THE RIGHT KIND U199
C-BAR-RJ STONY 818F	5L INDEPENDENCE 560-298Y	5L BLACK ADINA 525-560
	C-BAR-RJ STONY 659D	C-BAR CONTOUR 107X
		C-BAR STONY W909

Guidance is the \$80,000 stunning individual in type, data, and pedigree. His sire is MCD Spur 61111 was a feed efficiency star and son of Spur Franchise of Garton. His MGDam is sired by Mytty In Focus. Outcross genetics that have it all – get in on the ground floor of these outstanding genetics!!



BIEBER CL ENERGIZE F121
(sire of embryos)



C-BAR STONY W914 (full sister
to MGDam of STONY 818F)



EGL GUIDANCE 9117
(sire of embryos)



C-BAR STONY W928 (full sister
to MGDam of STONY 818F)

BJR Abigrace 805F



BJR ABIGRACE 905F

Abigrace 805F is sired by the \$150,000 Platinum and out of the famous Abigrace 209Z [a BJR donor that topped ND Red Select Sale to Brian Severance] who is a full sister to the Select Sires stud – Contour. 209Z has a 108 MPPA and her first daughters first bull topped C-Bar sale at \$17,000. 209Z currently has 25 calves registered to her. Abigrace 805F has a stunning set of Stockmarket ET calves on the ground.

25 3 CONVENTIONAL EMBRYOS

BJR ABIGRACE 805F X 3SCC DOMAIN A163

ProS HB GM BOOT JACK RANCH															
141	70	71	STORED AT GENEX, BILLINGS, MT												
19%	56%	10%													
CED	BW	WW	YW	ADG	DMI	M	ME	HPG	CEM	ST	MARB	YG	CW	REA	FAT
13	-1.6	65	112	0.3	1.35	25	7	12	5	17	0.69	0.17	27	0.16	0.05
47%	51%	30%	20%	14%	46%	52%	67%	46%	69%	49%	7%	88%	25%	36%	98%

3SCC DOMAIN A163

- BECKTON DOMINOR T122 Z1
- BKT LARKABEL R038 WA
- BASIN HOBO 0545
- BSKF EUCLA U278
- BROWN INCREDABULL Z7277
- BROWN MS NEW STANDARD A7053
- HXC CONQUEST 4405P
- BROWN C- ABIGRACE S602

BJR ABIGRACE 805F

- LSF MEW PLATINUM 5660C
- C-BAR ABIGRACE 209Z

Domain has 3,520 progeny registered proving his EPDs ranking in top 1-35% for ProS, HB, GM, CED, YW, ADG, ME, HPG, STAY, & MARB! He also adds dimension and type to his offspring! BJR has daughters entering the donor program.

26 3 CONVENTIONAL EMBRYOS

BJR ABIGRACE 805F X STRA RELENTLESS

ProS HB GM BOOT JACK RANCH															
141	73	68	STORED AT GENEX, BILLINGS, MT												
19%	53%	13%													
CED	BW	WW	YW	ADG	DMI	M	ME	HPG	CEM	ST	MARB	YG	CW	REA	FAT
16	-4.3	63	103	0.25	1.59	32	11	11	11	15	0.82	0.11	27	0.24	0.04
31%	24%	38%	39%	42%	64%	13%	94%	53%	23%	56%	2%	73%	26%	21%	92%

STRA RELENTLESS

- BIEBER DRIVEN C540
- BIEBER HARD DRIVE Y120
- BIEBER JOAN 309Y
- LARSON SUN KING 016
- STRA MISS TRACKER 141
- BROWN INCREDABULL Z7277
- BROWN MS NEW STANDARD A7053
- HXC CONQUEST 4405P
- BROWN C- ABIGRACE S602

BJR ABIGRACE 805F

- LSF MEW PLATINUM 5660C
- C-BAR ABIGRACE 209Z

Relentless is a popular sire at ST Genetics for body dimension in an elite calving ease package, outstanding milk, and marbling. He ranks in the Top 1-7% for ProS, HB, CED, BW, Mk, CEM, and Marbling!! His dam has a 105 MPPA, his MGDam has a 108 MPPA, and the MGGDam has a 107 MPPA. That is maternal production that you can count on!!



3SCC DOMAIN A163 (sire of embryos)



C-BAR ABIGRACE 209Z
(dam of Abigrace 805F)



STRA RELENTLESS (sire of embryos)



Dina 306 is one of the most proven and productive donors at BJR. 306 has a 106 MPPA. With 19 calves registered to her including her first 3 ET sons by Redemption averaged \$11,500; 2 outstanding Stockmarket sons to sell April 10th in the Ludvigson Herdbuilder Sale; 4 ET calves by Energize born this spring, etc. 306's dam has a 103 MPPA and 24 calves registered to her – in fact, Dina 306 is the 6th consecutive generational donor in this cow family! Talk about consistence of excellence!

27 3 CONVENTIONAL EMBRYOS
TBJR DINA 306 X EGL GUIDANCE 9117

ProS	HB	GM	BOOT JACK RANCH													
130	72	58	STORED AT GENEX, BILLINGS, MT													
31%	65%	17%														
CED	BW	WW	YW	ADG	DMI	M	ME	HPG	CEM	ST	MARB	YG	CW	REA	FAT	
14	-1.4	67	113	0.29	1.88	29	2	12	8	13	0.56	0.13	31	0.17	0.04	
35%	55%	25%	20%	16%	70%	19%	52%	46%	32%	80%	22%	85%	19%	29%	88%	

EGL GUIDANCE 9117

MCD SPUR 6111
AHL DUCHESS 427B

TBJR DINA 306

LSF SAGA 1040Y
LSF DINA N3044 S6120

SPUR FRANCHISE OF GARTON
MCD-2 RITOEISS 3155
BROWN JYJ REDEMPTION Y1334
AHL DUCHESS 9J
BECKTON EPIC R397 K
LSF MINOLA T7172 W9041
BUF CRK ROMEO L081
LSF DINA J1404 N3044

Guidance is the \$80,000 stunning individual in type, data, and pedigree. His sire is MCD Spur 61111 was a feed efficiency star and son of Spur Franchise of Garton. His MGDam is sired by Mytty In Focus. Outcross genetics that have it all – get in on the ground floor of these outstanding genetics!!



EGL GUIDANCE 9117
(sire of embryos)



LSF TBJ PROFITDRIVEN 5877C
(REDEMPTION son)



LSF BJR STOCK EXCHANGE 0804H
(STOCKMARKET son)

BJR Copper Queen 801F



BJR COPPER QUEEN 801F

Copper Queen 801F is a daughter of the \$150,000 Platinum and out of the many time syndicated LazyJ Scarlet 2201 that has topped several sales and currently has a syndicate of 6 owners. 2201 embryos demanded \$850/embryo at the Reds on the Prairie. 801F's MGGGDam is the \$50,000 Miss Forster CPRTOP 591 donor with an amazing 124 MPPA! 591's daughter, Forster CopperQueen 7168 [a past BJR Donor] produced sons such as National Champion Grand Prix and Sequoia. Copper Queen 801F has the look that will mature into her lineage. This 801F mating's should be amazing.

28 3 CONVENTIONAL EMBRYOS BJR COPPER QUEEN 801F X EGL GUIDANCE 9117

ProS HB GM **BOOT JACK RANCH**
152 66 87 **STORED AT GENEX, BILLINGS, MT**
6% 74% 2%

CED	BW	WW	YW	ADG	DMI	M	ME	HPG	CEM	ST	MARB	YG	CW	REA	FAT
12	0.3	74	130	0.35	1.97	25	6	13	8	12	0.68	0.14	46	0.29	0.03
62%	82%	6%	2%	1%	79%	52%	64%	33%	29%	92%	5%	89%	2%	14%	84%

EGL GUIDANCE 9117

MCD SPUR 6111	SPUR FRANCHISE OF GARTON
AHL DUCHESS 427B	MCD-2 RITOESS 3155
	BROWN JYJ REDEMPTION Y1334
	AHL DUCHESS 9U
LSF MEW PLATINUM 5660C	BROWN INCREDABULL Z7277
LAZYJ MS SCARLET 2201-5053	BROWN MS NEW STANDARD A7053
	RED FINE LINE MULBERRY 26P
	SRN COPPER CAP 5053

Guidance is the \$80,000 stunning individual in type, data, and pedigree. His sire is MCD Spur 61111 was a feed efficiency star and son of Spur Franchise of Garton. His MGDam is sired by Mytty In Focus. Outcross genetics that have it all – get in on the ground floor of these outstanding genetics!!



EGL GUIDANCE 9117 (sire of embryos)



LAZY J SCARLET 2201 (dam of COPPER QUEEN 801F)

29 3 CONVENTIONAL EMBRYOS
BJR COPPER QUEEN 801F X STRA RELENTLESS

ProS	HB	GM	BOOT JACK RANCH												
156	81	75	STORED AT GENEX, BILLINGS, MT												
6%	49%	13%													
CED	BW	WW	YW	ADG	DMI	M	ME	HPG	CEM	ST	MARB	YG	CW	REA	FAT
15	-3	66	109	0.27	1.69	28	11	14	11	15	0.78	0.12	36	0.26	0.04
39%	45%	33%	37%	42%	73%	42%	94%	25%	23%	56%	4%	77%	22%	20%	85%

STRA RELENTLESS

BIEBER DRIVEN C540
STRA CHEREBAL 305

BJR COPPER QUEEN 801F

LSF MEW PLATINUM 5660C
LAZYJ MS SCARLET 2201-5053
BIEBER HARD DRIVE Y120
BIEBER JOAN 309Y
LARSON SUN KING 016
STRA MISS TRACKER 141
BROWN INCREDABULL Z7277
BROWN MS NEW STANDARD A7053
RED FINE LINE MULBERRY 26P
SRN COPPER CAP 5053

Relentless is a popular sire at ST Genetics for body dimension in an elite calving ease package, outstanding milk, and marbling. He ranks in the Top 1-7% for ProS, HB, CED, BW, Mk, CEM, and Marbling!! His dam has a 105 MPPA, his MGDam has a 108 MPPA, and the MGGDam has a 107 MPPA. That is maternal production that you can count on!!



STRA RELENTLESS (sire of embryos)

30 3 CONVENTIONAL EMBRYOS
BJR COPPER QUEEN 801F X BIEBER CL ENERGIZE F121

ProS	HB	GM	BOOT JACK RANCH												
162	75	87	STORED AT GENEX, BILLINGS, MT												
4%	55%	3%													
CED	BW	WW	YW	ADG	DMI	M	ME	HPG	CEM	ST	MARB	YG	CW	REA	FAT
14	-2.6	71	125	0.34	1.76	25	9	13	9	14	0.65	0.11	45	0.39	0.04
42%	46%	15%	8%	5%	76%	54%	85%	32%	27%	62%	9%	72%	5%	8%	82%

BIEBER CL ENERGIZE F121

BIEBER CL ATOMIC C218
BIEBER CL ADELLE 575D

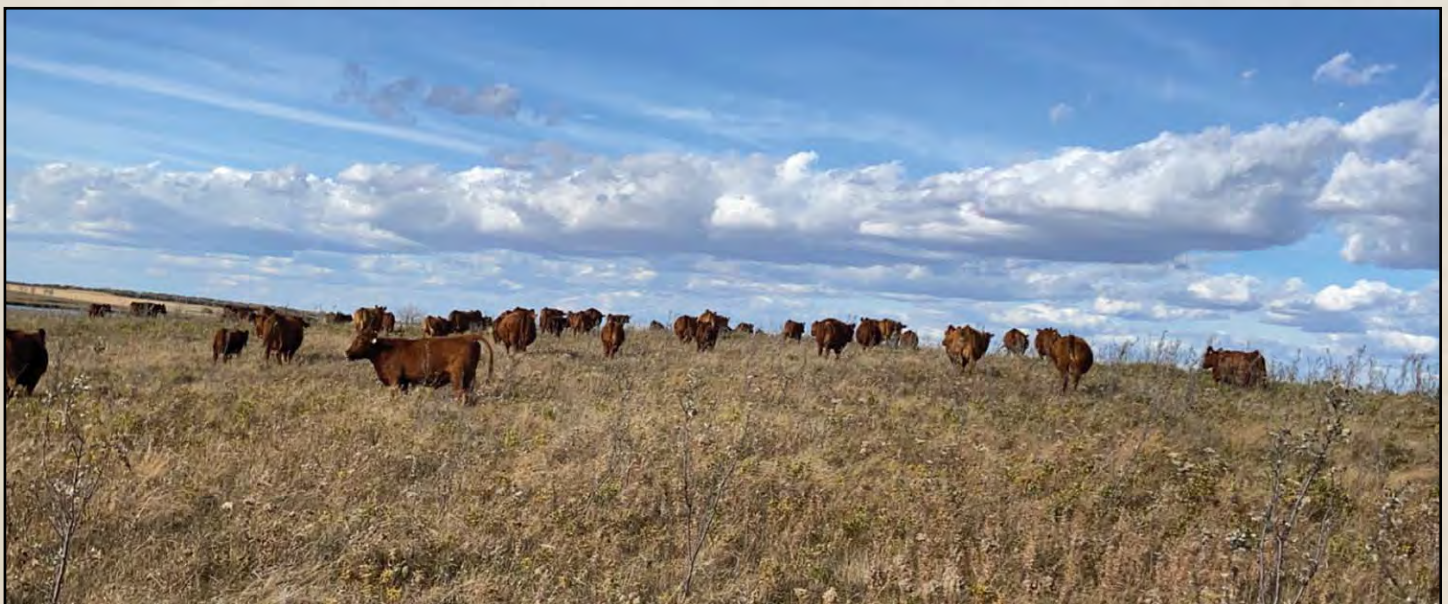
BJR COPPER QUEEN 801F

LSF MEW PLATINUM 5660C
LAZYJ MS SCARLET 2201-5053
ANDRAS FUSION R236
BIEBER DATELINE 308Y
BIEBER HARD DRIVE Y120
BIEBER ADELLE 297Y
BROWN INCREDABULL Z7277
BROWN MS NEW STANDARD A7053
RED FINE LINE MULBERRY 26P
SRN COPPER CAP 5053

Energize @ ABS is a data leader ranking in top 3-28% PROS, HB, GM, CED, BW, WW, YW, ADG, MK, CEM, STAY, MARB, CW, & REA! He has all the bases covered and reports of his first calves are exciting! Note that his MGDam is the same as the MGDam of the popular Stockmarket!



BIEBER CL ENERGIZE F121 (sire of embryos)



BJR Essence 904G



BJR ESSENCE 904G

From any angle, Essence 904G is gorgeous! Her MGDam sold for \$19,200 in the Brylor Sale as a heifer to Garth Griffin. 904G's MGGGDam is the \$50,000 for 50% Essence 42G that was 2X Agribition Supreme Champion Female. Essence 904G scanned a 5.87 for Marbling. At Boot Jack, we are excited about the outcross genetics blended with data in an attractive package. This calving ease, maternal, marbling embryo package should be in one of the most attractive packages available.

31 4 CONVENTIONAL EMBRYOS

BJR ESSENCE 904G X STRA RELENTLESS

ProS	HB	GM	BOOT JACK RANCH												
124	83	41	STORED AT GENEX, BILLINGS, MT												
48%	46%	48%													
CED	BW	WW	YW	ADG	DMI	M	ME	HPG	CEM	ST	MARB	YG	CW	REA	FAT
18	-5.9	56	85	0.18	1.89	29	-2	14	10	14	0.79	0.07	14	0.12	0.03
7%	4%	65%	73%	79%	88%	38%	46%	23%	41%	56%	4%	49%	68%	45%	78%

STRA RELENTLESS

BIEBER DRIVEN C540	BIEBER HARD DRIVE Y120
STRA CHEREBAL 305	BIEBER JOAN 309Y
	LARSON SUN KING 016
	STRA MISS TRACKER 141
5L DEFENDER 560-30Z	5L ADVOCATE 817-14W
GNRA MISS ESSENCE 622	5L BLACK ADINA 525-560
	XO CROWFOOT 0102X
	RED BRYLOR 230U ESSENCE 72A

BJR ESSENCE 904G



BJR ESSENCE 904G



BJR ESSENCE 904G

Relentless is a popular sire at ST Genetics for body dimension in an elite calving ease package, outstanding milk, and marbling. He ranks in the Top 1-7% for ProS, HB, CED, BW, Mk, CEM, and Marbling!! His dam has a 105 MPPA, his MGDam has a 108 MPPA, and the MGGDam has a 107 MPPA. That is maternal production that you can count on!!



STRA RELENTLESS (sire of embryos)



**GNRA MISS ESSENCE 622
(dam of ESSENCE 904G)**



**RED BRYLOR 230U ESSENCE 72A
(The \$19,200 MGDam of ESSENCE 904G)**



Online EMBRYO Sale

Opens: Tuesday, April 6, 2021 • 12 p.m. CDT

Closes: Wednesday, April 7, 2021 • 7 p.m. CDT

Selling: 120 Red Angus Embryos

CONTACTS:

Sam Twedt (701) 388-4035
Paul Haugen (406) 366-2855

VIEW CATALOG ONLINE:

twedtredangus.com and dvauction.com

SETTLEMENT:

Terms of Sale are cash. Buyers must settle with each ranch whom they have purchased embryos with. Invoices will be mailed out to keep buyer. Embryos will be released to each buyer upon settlement.

STORAGE:

Twedt Red Angus embryos are stored at Bovagen Embryo Transfer Center, Britton SD.
Boot Jack Ranch embryos are stored at Genex in Billings, Montana.

SHIPPING:

Buyer is responsible for shipping or pick up of embryos.

GUARANTEE:

Buyers are guaranteed one pregnancy per mating if implanted by a certified technician.

VIEW AND BID ONLINE:

Live bidding will be available online at www.dvauction.com.

PROMOTION AND CATALOG DESIGN

Tracey Koester, Cow Camp Promotions (701) 391-5440
cowcamppromotions.com • cowcampcatalogs.com

DVAuction
Broadcasting Real-Time Auctions
www.DVAuction.com

Watch & Bid online for FREE!

DVAuction Online Only Auctions How they work:

This means that bidders will be able to preview the lots online with complete information, including their pedigree, EPDs, and possibly a video, for several days prior to the sale. During that time, bidders can leave a maximum bid, which the system will represent confidentially up to that amount. Bidders can also bid incrementally, as the bid advances prior to the close.

All lots will close at the same time. Bidding will be extended if a bid is placed on any lot near the closing time. Bidding will officially close when there are no bids placed within a 5 minute period of time.

For General Questions Please Contact Our Office:
(402) 316-5460 or support@dvauction.com

*High Speed Internet Access Required



Paul C. Haugen

406-366-2855 • bootjack@middrivers.com
232 Cedar St. • Lewistown, MT 59457

Twedt
RED ANGUS

Sam Twedt

C: (701) 388-4035

H: (701) 262-4768

twedtredangus@hotmail.com

www.twedtredangus.com

2061 95th Ave NE • McHenry, ND 58464

