

# Online Embryo Sale **DVAuction** Broadcasting Real-time Auctions

## Thursday, April 6, 2023

*Bidding Opens:* 12 Noon CDT • *Bidding Closes:* 7 p.m. CDT

*Selling:*

75 Embryos plus some rare semen lots including  
5 units of PIE Quarterback 789!



*Embryos by these great donors sell!*



**RED U2 LAKOTA 54B – #4362489**



**RED U-2 RAINBOW 417C – #2585248**



**BIEBER LAURA 158W – #1311673**

**DVAuction**  
Broadcasting Real-Time Auctions  
[www.DVAuction.com](http://www.DVAuction.com)

Watch & Bid online for FREE!

### DVAuction Online Only Auctions How they work:

This means that bidders will be able to preview the lots online with complete information, including their pedigree, EPDs, and possibly a video, for several days prior to the sale. During that time, bidders can leave a maximum bid, which the system will represent confidentially up to that amount. Bidders can also bid incrementally, as the bid advances prior to the close. All lots will close at the same time. Bidding will be extended if a bid is placed on any lot near the closing time. Bidding will officially close when there are no bids placed within a 5 minute period of time.

For General Questions Please Contact Our Office:  
(402) 316-5460 or [support@dvauction.com](mailto:support@dvauction.com)

\*High Speed Internet Access Required

**CONTACT:** Sam Twedt.....(701) 388-4035

**VIEW CATALOG ONLINE:** [twedtredangus.com](http://twedtredangus.com) and [dvauction.com](http://dvauction.com)

**SETTLEMENT:** Terms of Sale are cash. Invoices will be mailed out to each buyer. Embryos will be released to each buyer upon settlement.

**STORAGE:** Twedt Red Angus embryos are stored at Bovagen Embryo Transfer Center, Britton SD.

**SHIPPING:** Buyer is responsible for shipping or pick up of embryos.

**GUARANTEE:** Buyers are guaranteed one pregnancy per mating if implanted by a certified technician.

**VIEW AND BID ONLINE:** Live bidding will be available online at [www.dvauction.com](http://www.dvauction.com).

**Twedt**  
**RED ANGUS**

**Sam Twedt**

C: (701) 388-4035 • H: (701) 262-4768  
[twedtredangus@hotmail.com](mailto:twedtredangus@hotmail.com)

2061 95th Ave NE • McHenry, ND 58464  
[www.twedtredangus.com](http://www.twedtredangus.com)





# Red U2 Lakota 54B



**RED U2 LAKOTA 54B**

For the first time ever, we are offering embryos off of 54B. She is the second-high-selling cow from the U2 dispersion selling for \$55,000. One of the most beautiful cows you will ever see. She is perfect footed and flat out just gets it done. We have calves on the group on this mating and they are incredible. These will probably be the only embryos ever offered on this cow.

**1**

## 3 IVF EMBRYOS

RED U2 LAKOTA 54B X RREDS BLUE PRINT H001

ProS	HB	GM	STORED AT BOVAGEN EMBRYO TRANSFER CENTER, BRITTON, SD														
49	52	-4															
90%	56%	97%															
CED	BW	WW	YW	ADG	DMI	M	ME	HPG	CEM	ST	MARB	YG	CW	REA	FAT		
14	-2.7	60	94	0.21	1.71	26	5	9	8	17	0.02	0.03	24	0.31	0.03		
41%	37%	52%	56%	60%	72%	48%	57%	82%	48%	40%	99%	38%	43%	34%	63%		

RREDS BLUE PRINT H001

GLACIER CHATEAU 744

RREDS PRIMROSE F835

RED U2 LAKOTA 54B

RED MINBURN COPENHAGEN 3Y

RED U-2 LAKOTA 318Y

LMAN KING ROB 8621

GLACIER REBALA

RREDS SENECA 731C

STRA PRIMROSE 530

RED RMJ REDMAN 1T

MINBURN MAY 112M

RED U2 MISSION 61W

RED FLYING K LAKOTA 45U



**RREDS BLUE PRINT H001**



**DAUGHTER OF 54B**





**RAINBOW 417C DAUGHTER**



**RAINBOW 417C DAUGHTER**



**RAINBOW 417C SON**



**BIEBER JUMPSTART J137**



**STRA ADMIRAL 0150**



**RED U-2 RAINBOW 417C**

## 2A 3 OR 5 CONVENTIONAL EMBRYOS RED U-2 RAINBOW 417C X BIEBER JUMPSTART J137

ProS	HB	GM	STORED AT BOVAGEN EMBRYO TRANSFER CENTER, BRITTON, SD													
99	48	52	38%	68%	19%											
CED	BW	WW	YW	ADG	DMI	M	ME	HPG	CEM	ST	MARB	YG	CW	REA	FAT	
15	-1.5	71	118	0.29	1.96	33	17	11	9	16	0.42	0.09	44	0.40	0.03	
18%	53%	29%	32%	35%	78%	9%	61%	50%	12%	56%	46%	59%	3%	11%	68%	

BIEBER JUMPSTART J137

BIEBER CL ENERGIZE F121

BIEBER GALLEE 390G

RED U-2 RAINBOW 417C

RED U-2 RECON 192Y

RED U2 RAINBOW 172Z

BIEBER CL ATOMIC C218  
BIEBER CL ADELLE 575D  
GMRA TRINITY 5222  
BIEBER GALLEE 550D  
RED U2 MISSION 61W  
RED U-2 LARKABA 8133U  
RED HOWE MAGNUM 169W  
RED U-2 RAINBOW 6012S

Combining Rainbow and the \$185,000 Jumpstart is a mating we are super excited about and a mating that we feel is going to really work. These ones could be special.

U2 Rainbow 417C is another that is rising to the top. She was our pick of the cows on the dis-persion at U2 for \$25,000. Her calves and daughters are getting it done. We plan to flush her Resource daughter this spring. Her Relentless daughters have sold for \$8,500 to Jake Feddes and one to Ed Kalinoff and Jim Cravens for \$10,000. She is perfect footed and perfect uddered.

## 2B 3 OR 5 CONVENTIONAL EMBRYOS RED U-2 RAINBOW 417C X STRA ADMIRAL 0150

ProS	HB	GM	STORED AT BOVAGEN EMBRYO TRANSFER CENTER, BRITTON, SD													
93	64	29	45%	39%	55%											
CED	BW	WW	YW	ADG	DMI	M	ME	HPG	CEM	ST	MARB	YG	CW	REA	FAT	
15	-1.0	74	109	0.22	1.96	32	6	9	11	16	0.38	0.09	38	0.19	0.01	
25%	62%	29%	36%	54%	78%	17%	57%	68%	7%	48%	55%	57%	14%	32%	35%	

STRA ADMIRAL 0150

STRA GENERAL 882

STRA BANDITO 8132

RED U-2 RAINBOW 417C

RED U-2 RECON 192Y

RED U2 RAINBOW 172Z

PIE ONE OF A KIND 352  
BIEBER PRIMROSE 107W  
BIEBER DRIVEN C540  
STRA BANDITO 423  
RED U2 MISSION 61W  
RED U-2 LARKABA 8133U  
RED HOWE MAGNUM 169W  
RED U-2 RAINBOW 6012S

Rainbow and our high-selling bull from 2021, STRA Admiral 0150. Admiral sold for \$27,500 to Kenner Simmentals. He was a standout General son who we have used heavily in our program. This mating will really click, I think.



# Bieber Laura 158W



**BIEBER LAURA 158W**

The Laura 158W cow needs little introduction. She has flat out changed our program. She has put many daughters back into our herd and we have sold many high-selling bulls out of her. She is most well known for being the dam of Bieber Hard Drive. She has an MPPA of 111

**3A**

## 3 OR 5 IVF EMBRYOS

BIEBER LAURA 158W X RREDS BLUE PRINT H001

ProS	HB	GM	STORED AT BOVAGEN EMBRYO TRANSFER CENTER, BRITTON, SD																												
90	48	42	48%	62%	48%	CED	BW	WW	YW	ADG	DMI	M	ME	HPG	CEM	ST	MARB	YG	CW	REA	FAT										
16	-3.1	65	105	0.25	1.82	28	9	12	10	14	0.43	-0.02	34	0.55	0.03	19%	31%	35%	35%	35%	81%	30%	73%	45%	15%	61%	50%	16%	26%	4%	56%

RREDS BLUE PRINT H001

GLACIER CHATEAU 744

RREDS PRIMROSE F835

LMAN KING ROB 8621

GLACIER REBALA

RREDS SENECA 731C

STRA PRIMROSE 530

LJC LANCER 806

LJC HANNAH 106

C A FUTURE DIRECTION 5321

BASIN LAURA 3673

BIEBER LAURA 158W

LJC MISSION STATEMENT P27

BASIN LAURA 5301

The first set of embryos on Laura 158W will be full sibs to one of our high sellers in our 2023 sale. He sold to Wasem Red Angus for \$17,000. He was a standout Blue Print son from birth on. Proven embryos that will work.

**3B**

## 3 IVF EMBRYOS

BIEBER LAURA 158W X RED U2 TOWNSHIP 17G

ProS	HB	GM	STORED AT BOVAGEN EMBRYO TRANSFER CENTER, BRITTON, SD																												
85	34	51	51%	83%	41%	CED	BW	WW	YW	ADG	DMI	M	ME	HPG	CEM	ST	MARB	YG	CW	REA	FAT										
11	0.3	67	108	0.25	1.78	27	1	14	6	11	0.58	0.07	33	0.24	0.02	54%	72%	28%	31%	35%	78%	40%	39%	20%	57%	89%	33%	48%	30%	39%	50%

RED U2 TOWNSHIP 17G

RED MRLA RESOURCE 137E

U2 BEAUTY 113Z

MRLA RELOAD 56C

MRLA MISS 4422B

RED U-2 MAMA'S BOY 167X

RED U-2 BEAUTY 48X

LJC LANCER 806

LJC HANNAH 106

C A FUTURE DIRECTION 5321

BASIN LAURA 3673

BIEBER LAURA 158W

LJC MISSION STATEMENT P27

BASIN LAURA 5301

The next set out of 158W are by the \$115,000 U2 Township. This mating works very, very well. You should see the replacement heifer in our pen out of this mating! Another proven mating that works very well.



**RREDS BLUE PRINT H001**



**RED U2 TOWNSHIP 17G**



3C

### 3 OR 5 IVF EMBRYOS

BIEBER LAURA 158W X RED MINBURN COPENHAGEN 3Y

ProS	HB	GM	STORED AT BOVAGEN EMBRYO TRANSFER CENTER, BRITTON, SD													
94	52	42	44%	55%	49%	CED	BW	WW	YW	ADG	DMI	M	ME	HPG	CEM	ST
14	-0.9	67	107	0.25	1.70	25	-2	12	9	13	0.43	0.03	35	0.29	0.01	
42%	63%	29%	33%	38%	72%	54%	32%	47%	26%	72%	50%	32%	24%	29%	30%	

RED MINBURN COPENHAGEN 3Y

RED RMJ REDMAN 1T  
MINBURN MAY 112M  
5L NORSEMAN KING 2291  
CROWFOOT KURUBA 4033P  
CRESCENT CREEK MAIN EVENT 6H  
MINBURN MAY 90G  
LJC LANCASTER 806  
LJC HANNAH 106  
C A FUTURE DIRECTION 5321  
BASIN LAURA 3673

BIEBER LAURA 158W

LJC MISSION STATEMENT P27  
BASIN LAURA 5301

Copenhagen 3Y took the breed by storm after the U2 dispersion when the daughters were the high-selling sire group. They just flat out get the job done. The heifers out of this deal will be special.



RED MINBURN COPENHAGEN 3Y

3D

### 3 OR 5 IVF EMBRYOS

BIEBER LAURA 158W X STRA RELENTLESS

ProS	HB	GM	STORED AT BOVAGEN EMBRYO TRANSFER CENTER, BRITTON, SD													
156	79	77	7%	43%	5%	CED	BW	WW	YW	ADG	DMI	M	ME	HPG	CEM	ST
17	-4.4	62	96	0.21	1.27	32	-5	15	11	15	0.99	0.07	29	0.25	0.03	
8%	25%	45%	50%	53%	46%	19%	29%	14%	10%	53%	2%	47%	40%	37%	58%	

STRA RELENTLESS

BIEBER DRIVEN C540  
STRA CHEREBAL 305  
BIEBER HARD DRIVE Y120  
BIEBER JOAN 309Y  
LARSON SUN KING 016  
STRA MISS TRACKER 141  
LJC LANCASTER 806  
LJC HANNAH 106  
C A FUTURE DIRECTION 5321  
BASIN LAURA 3673

BIEBER LAURA 158W

BASIN LAURA 5301

We have not put any of these 158W x Relentless embryos in yet, but man I think this could be really special. Relentless was one of our high-selling bulls in 2019 to ST Genetics and is proving to be a true calving ease and female maker throughout the country.



STRA RELENTLESS

3E

### 3 OR 5 IVF EMBRYOS

BIEBER LAURA 158W X CRUMP FORERUNNER 6601

ProS	HB	GM	STORED AT BOVAGEN EMBRYO TRANSFER CENTER, BRITTON, SD													
100	33	67	37%	84%	14%	CED	BW	WW	YW	ADG	DMI	M	ME	HPG	CEM	ST
16	-3.0	68	114	0.29	1.80	26	8	11	10	11	0.69	0.08	36	0.24	0.02	
13%	32%	26%	20%	16%	79%	48%	71%	57%	11%	89%	14%	52%	19%	38%	49%	

CRUMP FORERUNNER 6601

CRUMP PACESETTER 491  
MDM SUSIE 133-9  
5L MTN SIGN 435-10Z  
MDM VERNICE 1020  
LJC JAVELIN M08  
MDM SUSIE 91-6  
LJC LANCASTER 806  
LJC HANNAH 106  
C A FUTURE DIRECTION 5321  
BASIN LAURA 3673

BIEBER LAURA 158W

BASIN LAURA 5301

Crump Forerunner has put some awesome females back into our program. We feel this mating will really click.



CRUMP FORERUNNER 6601



Full Sib to Lot 3A



Full Sib to Lot 3B



# Larson Flo - Marie 245-369



**BIEBER JUMPSTART J137**



**CRUMP SUPREME 7813**



**CRUMP FORERUNNER 6601**



**LARSON FLO-MARIE 245-369**

**4A**

## 3 CONVENTIONAL EMBRYOS

LARSON FLO-MARIE 245-369 X BIEBER JUMPSTART J137

ProS	HB	GM
94	45	50
45%	72%	22%

STORED AT BOVAGEN EMBRYO TRANSFER CENTER, BRITTON, SD

CED	BW	WW	YW	ADG	DMI	M	ME	HPG	CEM	ST	MARB	YG	CW	REA	FAT
16	-2.8	73	125	0.33	2.08	32	23	16	9	14	0.48	0.08	34	0.29	0.03
15%	30%	22%	17%	12%	89%	10%	93%	5%	20%	68%	32%	57%	22%	33%	65%

**BIEBER JUMPSTART J137**

BIEBER CL ENERGIZE F121

BIEBER GALLEE 390G

**LARSON FLO-MARIE 245-369**

LARSON SUN KING 016

LARSON FLO-MARIE 369-18

BIEBER CL ATOMIC C218  
BIEBER CL ADELLE 575D  
GMRA TRINITY 5222  
BIEBER GALLEE 550D  
BECKTON NEBULA P P707  
LARSON TAMARA 545-556  
LCHMN HEVN'S SAKE 1002F  
LARSON FLO-MARIE 185

The first mating with Flo is Bieber Jumpstart. These are fresh and new genetics, and we feel this mating has the potential to be very special.

**4B**

## 3 CONVENTIONAL EMBRYOS

LARSON FLO-MARIE 245-369 X CRUMP SUPREME 7813

ProS	HB	GM
68	28	40
72%	83%	38%

STORED AT BOVAGEN EMBRYO TRANSFER CENTER, BRITTON, SD

CED	BW	WW	YW	ADG	DMI	M	ME	HPG	CEM	ST	MARB	YG	CW	REA	FAT
10	0.3	86	142	0.35	2.34	33	23	17	7	12	0.47	0.11	33	0.11	0.02
60%	67%	22%	17%	12%	89%	9%	93%	5%	51%	87%	34%	67%	25%	49%	46%

**CRUMP SUPREME 7813**

PIE ONE OF A KIND 352

MLK CRK SHEBA 048

**LARSON FLO-MARIE 245-369**

LARSON SUN KING 016

LARSON FLO-MARIE 369-18

BUF CRK THE RIGHT KIND U199  
PIE FAYETTE 1160  
5L BLAZIN TRAIL 1336-237V  
MLK CRK SHEBA 748  
BECKTON NEBULA P P707  
LARSON TAMARA 545-556  
LCHMN HEVN'S SAKE 1002F  
LARSON FLO-MARIE 185

Crump Supreme is a One Of A Kind son with a ton of growth. If you want to add performance, these embryos will do the trick.

**4C**

## 3 CONVENTIONAL EMBRYOS

LARSON FLO-MARIE 245-369 X CRUMP FORERUNNER 6601

ProS	HB	GM
84	39	45
57%	76%	29%

STORED AT BOVAGEN EMBRYO TRANSFER CENTER, BRITTON, SD

CED	BW	WW	YW	ADG	DMI	M	ME	HPG	CEM	ST	MARB	YG	CW	REA	FAT
16	-3.3	64	107	0.28	1.75	29	11	12	10	13	0.51	0.13	26	0.00	0.02
19%	26%	40%	30%	21%	76%	32%	88%	50%	16%	81%	28%	73%	38%	68%	54%

**CRUMP FORERUNNER 6601**

CRUMP PACESETTER 491

MDM SUSIE 133-9

**LARSON FLO-MARIE 245-369**

LARSON SUN KING 016

LARSON FLO-MARIE 369-18

5L MTN SIGN 435-10Z  
MDM VERNICE 1020  
LJC JAVELIN M08  
MDM SUSIE 91-6  
BECKTON NEBULA P P707  
LARSON TAMARA 545-556  
LCHMN HEVN'S SAKE 1002F  
LARSON FLO-MARIE 185

I think the heifers out of this mating by Crump Forerunner 6601 will be fantastic.





**BIEBER DATELINE 308Y**

We purchased Bieber Dateline 308Y a few years back off of Bieber's fall production sale. She is most well-known for raising the \$65,000 Bieber Atomic who sold to Accelerated Genetics. She is an easy-fleshing, good-footed and good-uddered cow.

**5A**

## 5 IVF EMBRYOS

BIEBER DATELINE 308Y X BIEBER DRIVEN C540

ProS	HB	GM	STORED AT BOVAGEN EMBRYO TRANSFER CENTER, BRITTON, SD																												
104	60	44	49%	50%	36%	CED	BW	WW	YW	ADG	DMI	M	ME	HPG	CEM	ST	MARB	YG	CW	REA	FAT										
15	-3.2	74	113	0.24	1.67	27	7	15	7	16	0.50	0.02	34	0.35	0.02	29%	26%	12%	20%	38%	69%	40%	68%	33%	53%	46%	41%	28%	20%	18%	39%

**BIEBER DRIVEN C540**

BIEBER HARD DRIVE Y120  
BIEBER JOAN 309Y  
LACY GOLD BAR 8123  
BIEBER LAURA 158W  
LCOC HIGH NOON A093R  
BIEBER JOAN 7502  
CCF SEQUOYA 0361  
LCC REBELLA NA123  
HUST CHIEF SEQUOYA R336  
BASIN CHEROKEE 4246  
BASIN ROSE 7127  
BASIN ROSE 1938

**BIEBER DATELINE 308Y**

Bieber Driven C540 has been a herd sire here for many years. He will be breeding cows again for us this year at 8 years old. He has put some of the most productive daughters back into our herd. Proven, awesome embryos here.



**BIEBER DRIVEN C540**

**5B**

## 5 IVF EMBRYOS

BIEBER DATELINE 308Y X RREDS SENECA 731C

ProS	HB	GM	STORED AT BOVAGEN EMBRYO TRANSFER CENTER, BRITTON, SD																												
61	47	13	80%	55%	77%	CED	BW	WW	YW	ADG	DMI	M	ME	HPG	CEM	ST	MARB	YG	CW	REA	FAT										
14	-3.1	72	112	0.26	1.75	24	7	13	5	17	0.17	0.12	31	0.26	0.05	38%	28%	16%	21%	31%	73%	62%	70%	44%	74%	45%	84%	62%	24%	23%	63%

**RREDS SENECA 731C**

BIEBER ROLLIN DEEP Y118  
RREDS ASTER 309A  
BIEBER ROOSEVELT W384  
BIEBER TILLY 399W  
BECKTON EPIC R397 K  
MLK CRK ASTER 175  
CCF SEQUOYA 0361  
LCC REBELLA NA123  
HUST CHIEF SEQUOYA R336  
BASIN ROSE 7127  
BASIN CHEROKEE 4246  
BASIN ROSE 1938

**BIEBER DATELINE 308Y**

RREDS Seneca 731C needs very little introduction for what he has done for people around the country. We have full sibs to these embryos in production and they are good-looking cows.



**RREDS SENECA 731C**



# Bieber Dateline 308Y

50

## 5 IVF EMBRYOS

BIEBER DATELINE 308Y X CRUMP SUPREME 7813

ProS	HB	GM	STORED AT BOVAGEN EMBRYO TRANSFER CENTER, BRITTON, SD																												
45	12	33	94%	96%	51%	CED	BW	WW	YW	ADG	DMI	M	ME	HPG	CEM	ST	MARB	YG	CW	REA	FAT										
10	-0.5	90	144	0.34	2.24	29	21	15	4	12	0.38	0.08	35	0.20	0.02	56%	57%	8%	12%	19%	80%	24%	86%	34%	86%	84%	55%	51%	18%	31%	39%

CRUMP SUPREME 7813

PIE ONE OF A KIND 352  
MLK CRK SHEBA 048  
HUST CHIEF SEQUOYA R336  
BASIN ROSE 7127  
BUF CRK THE RIGHT KIND U199  
PIE FAYETTE 1160  
5L BLAZIN TRAIL 1336-237V  
MLK CRK SHEBA 748  
CCF SEQUOYA 0361  
LCC REBELLA NA123  
BASIN CHEROKEE 4246  
BASIN ROSE 1938

BIEBER DATELINE 308Y

Dateline and Crump Supreme produce powerhouse embryos with high growth.



CRUMP SUPREME 7813

50

## 5 IVF EMBRYOS

BIEBER DATELINE 308Y X PIE CINCH 4126

ProS	HB	GM	STORED AT BOVAGEN EMBRYO TRANSFER CENTER, BRITTON, SD																												
46	43	3	93%	60%	79%	CED	BW	WW	YW	ADG	DMI	M	ME	HPG	CEM	ST	MARB	YG	CW	REA	FAT										
15	-3.3	70	109	0.24	1.53	28	6	10	5	17	0.13	0.12	22	-0.02	0.03	32%	24%	19%	26%	39%	58%	31%	61%	76%	83%	42%	85%	62%	49%	61%	55%

PIE CINCH 4126

LSF SAGA 1040Y  
TKP BONNE BEL 110  
HUST CHIEF SEQUOYA R336  
BASIN ROSE 7127  
BECKTON EPIC R397 K  
LSF MINOLA T7172 W9041  
HXC CONQUEST 4405P  
TKP BONNE BEL 9031  
CCF SEQUOYA 0361  
LCC REBELLA NA123  
BASIN CHEROKEE 4246  
BASIN ROSE 1938

BIEBER DATELINE 308Y

The Dateline x Cinch mating has done wonders for our program and the daughters are working great now. Awesome, proven embryos here.



PIE CINCH 4126







**STRA RELENTLESS**



**RREDS SENECA 731C**



**CRUMP FORERUNNER 6601**



**BIBER BELGA 345X SON**



**BIBER BELGA 345X**

Bieber Belga 345X was a cow we purchased from Biebers. She started her career with us by raising one of our high sellers, STRA Hercules, to Nordlund Stock Farm. Hercules is doing an awesome job for them. She ranks in the top 1% for HB and 7% for PROS. She has a 108 MPPA. Belga is making a difference in our program, and I know she can do it in yours too. We have used all these matings in our program with great success. We are confident in all of them.

## 6A 3 OR 5 CONVENTIONAL EMBRYOS BIBER BELGA 345X X STRA RELENTLESS

ProS	HB	GM	STORED AT BOVAGEN EMBRYO TRANSFER CENTER, BRITTON, SD																												
149	119	30	14%	1%	54%	CED	BW	WW	YW	ADG	DMI	M	ME	HPG	CEM	ST	MARB	YG	CW	REA	FAT										
17	-4.3	54	81	0.17	1.06	33	-10	17	11	19	0.57	0.11	17	0.12	0.05	12%	27%	72%	79%	82%	28%	11%	7%	5%	4%	12%	50%	69%	66%	46%	92%

STRA RELENTLESS

BIEBER DRIVEN C540

STRA CHEREBAL 305

BIBER BELGA 345X

BIEBER ROUGH RIDER 10712

OLC BELGA R408

BIEBER HARD DRIVE Y120  
BIEBER JOAN 309Y  
LARSON SUN KING 016  
STRA MISS TRACKER 141  
BASIN TREND SETTER 6074  
BIEBER ADELLE 8958  
OLC VALOR N131  
OLC BELGA L407

## 6B 2 CONVENTIONAL EMBRYOS BIBER BELGA 345X X RREDS SENECA 731C

ProS	HB	GM	STORED AT BOVAGEN EMBRYO TRANSFER CENTER, BRITTON, SD																												
92	98	-6	45%	7%	97%	CED	BW	WW	YW	ADG	DMI	M	ME	HPG	CEM	ST	MARB	YG	CW	REA	FAT										
14	-2.0	64	101	0.24	1.69	25	0	16	9	19	0.01	0.15	27	0.27	0.07	41%	45%	42%	44%	48%	68%	54%	39%	13%	29%	14%	98%	79%	38%	21%	97%

RREDS SENECA 731C

BIEBER ROLLIN DEEP Y118

RREDS ASTER 309A

BIBER BELGA 345X

BIEBER ROUGH RIDER 10712

OLC BELGA R408

BIEBER ROOSEVELT W384  
BIEBER TILLY 399W  
BECKTON EPIC R397 K  
MLK CRK ASTER 175  
BASIN TREND SETTER 6074  
BIEBER ADELLE 8958  
OLC VALOR N131  
OLC BELGA L407

## 6C 3 CONVENTIONAL EMBRYOS BIBER BELGA 345X X CRUMP FORERUNNER 6601

ProS	HB	GM	STORED AT BOVAGEN EMBRYO TRANSFER CENTER, BRITTON, SD																												
93	74	20	44%	42%	63%	CED	BW	WW	YW	ADG	DMI	M	ME	HPG	CEM	ST	MARB	YG	CW	REA	FAT										
16	-2.9	60	99	0.24	1.59	27	3	13	11	16	0.26	0.13	24	0.11	0.04	17%	34%	53%	49%	45%	62%	39%	49%	47%	5%	48%	63%	74%	45%	47%	82%

CRUMP FORERUNNER 6601

CRUMP PACESETTER 491

MDM SUSIE 133-9

BIBER BELGA 345X

BIEBER ROUGH RIDER 10712

OLC BELGA R408

5L MTN SIGN 435-10Z  
MDM VERNICE 1020  
LJC JAVELIN M08  
MDM SUSIE 91-6  
BASIN TREND SETTER 6074  
BIEBER ADELLE 8958  
OLC VALOR N131  
OLC BELGA L407



# NSFR MTX W14



**BIEBER DRIVEN C540**



**S A V RAINFALL 6846**



**STRA RELENTLESS**



**NSFR MTX W14**

NSFR MTX W14 is a cow that flat out gets the job done. She was born and raised at Nordlund Stock Farm where she was purchased by Rust Mountain View Ranch. She was a donor at Rust Mountain for many years before we acquired her. The MTX cow family is a true cow-maker family. The daughters we have in our herd are outstanding. She also raises awesome sons with her PIE Cinch son topping the sale in 2020 to Weber Red Angus and Charolais where he is working very well for them. We have used all these matings in our program with great success. They are true female-making embryos.

**7A**

## 3 OR 5 IVF EMBRYOS

NSFR MTX W14 X BIEBER DRIVEN C540

ProS	HB	GM	STORED AT BOVAGEN EMBRYO TRANSFER CENTER, BRITTON, SD														
116	89	28	41%	13%	57%	CED	BW	WW	YW	ADG	DMI	M	ME	HPG	CEM	ST	MARB
			15	-2.7	61	93	0.20	1.13	23	4	15	10	19	0.44	0.04	15	0.11
			27%	32%	51%	56%	66%	39%	67%	51%	36%	8%	19%	52%	35%	56%	54%

BIEBER DRIVEN C540

BIEBER HARD DRIVE Y120

LACY GOLD BAR 8123

BIEBER LAURA 158W

BIEBER JOAN 309Y

LCOC HIGH NOON A093R

BIEBER JOAN 7502

NSFR MTX W14

RED SIX MILE SAKIC 832S

RED SIX MILE AVIATOR 217P

RED SIX MILE SIERA 257P

LMG MTX 3032

FORSTER KING ROB 9028

LMG MTX 672-827

**7B**

## 3 OR 5 IVF EMBRYOS

NSFR MTX W14 X S A V RAINFALL 6846

ProS	HB	GM	STORED AT BOVAGEN EMBRYO TRANSFER CENTER, BRITTON, SD														
95	67	29	48%	32%	56%	CED	BW	WW	YW	ADG	DMI	M	ME	HPG	CEM	ST	MARB
			16	-2.4	59	96	0.24	0.99	21	-2	12	9	17	0.40	0.07	8-0.05	0.02
			17%	38%	55%	52%	50%	28%	84%	27%	47%	33%	45%	55%	50%	71%	67%

S A V RAINFALL 6846

COLEMAN CHARLO 0256

O C C PAXTON 730P

S A V BLACKCAP MAY 4136

BOHI ABIGALE 6014

S A V 8180 TRAVELER 004

S A V MAY 2397

NSFR MTX W14

RED SIX MILE SAKIC 832S

RED SIX MILE AVIATOR 217P

RED SIX MILE SIERA 257P

LMG MTX 3032

FORSTER KING ROB 9028

LMG MTX 672-827

**7C**

## 3 OR 5 IVF EMBRYOS

NSFR MTX W14 X STRA RELENTLESS

ProS	HB	GM	STORED AT BOVAGEN EMBRYO TRANSFER CENTER, BRITTON, SD														
130	98	32	41%	12%	54%	CED	BW	WW	YW	ADG	DMI	M	ME	HPG	CEM	ST	MARB
			17	-4.9	49	71	0.14	0.58	28	-6	13	11	19	0.67	0.10	2-0.14	0.03
			7%	16%	84%	91%	94%	4%	46%	22%	38%	5%	16%	47%	60%	89%	84%

STRA RELENTLESS

BIEBER DRIVEN C540

BIEBER HARD DRIVE Y120

STRA CHEREBAL 305

BIEBER JOAN 309Y

LARSON SUN KING 016

STRA MISS TRACKER 141

NSFR MTX W14

RED SIX MILE SAKIC 832S

RED SIX MILE AVIATOR 217P

RED SIX MILE SIERA 257P

LMG MTX 3032

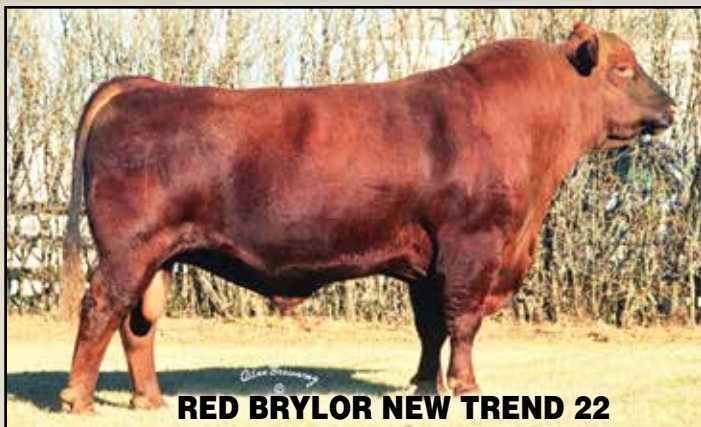
FORSTER KING ROB 9028

LMG MTX 672-827









**RED BRYLOR NEW TREND 22**

11

## RED BRYLOR NEW TREND 22

#438816

BD	BW	WW	WR	Cat.	%	Dam's MPPA	Age
2/10/94	84	766	114	1A	100%	107.0	3

SSS BLACK TREND 13B

V D A R NEW TREND 315

RED SSS MISS DYNAMO 3W

MEADOW CK MS SEAMAN 31A

RED SEAMAN CHIEF 47Y

RED MEADOW CK PRINCESS 10W

ProS	HB	GM
97	62	35
40%	35%	51%

CED	BW	WW	YW	ADG	DMI	M	ME	HPG	CEM	ST	MARB	YG	CW	REA	FAT
7	2.6	56	93	0.23	1.60	31	10	17	7	16	0.32	0.10	28	0.09	0.02
97%	97%	71%	62%	50%	59%	12%	81%	5%	49%	40%	67%	62%	34%	54%	50%

3 Units



**5L NORSEMAN KING 2291**

12

## 5L NORSEMAN KING 2291

#806707

GGP

BD	BW	WW	WR	Cat.	%	Dam's MPPA	Age
2/9/01	97	721		1A	100%	100.0	9

VGW KING OF THE WEST

VGW ACE 613

VGW MT TABITHA 9633

NORSEMAN 1312 PJM

376 P J M 141

P J M POWERPOINT 2009

ProS	HB	GM
69	43	26
75%	67%	67%

CED	BW	WW	YW	ADG	DMI	M	ME	HPG	CEM	ST	MARB	YG	CW	REA	FAT
9	0.2	50	82	0.20	1.50	25	-5	13	6	13	0.38	-0.28	00.61	-0.02	
84%	81%	86%	82%	73%	50%	56%	15%	34%	74%	78%	56%	2%	97%	5%	5%

6 Units



**PZC TMA5 FIRESTORM 1800 ET**

13

## PZC TMA5 FIRESTORM 1800 ET

#1472101

BD	BW	WW	WR	Cat.	%	Dam's MPPA	Age
3/30/11	92	715		1A	100%	100.0	7

RED SIX MILE SAKIC 832S

RED SIX MILE AVIATOR 217P

RED SIX MILE SIERA 257P

GT CITA 4060

CITATION 138

JMDF MISS LANA

ProS	HB	GM
76	84	-9
67%	9%	98%

CED	BW	WW	YW	ADG	DMI	M	ME	HPG	CEM	ST	MARB	YG	CW	REA	FAT
12	-0.7	63	91	0.18	1.17	29	-12	18	8	14	0.10	0.00	9-0.24	-0.03	
61%	68%	47%	66%	82%	25%	21%	5%	3%	31%	66%	95%	20%	88%	96%	3%

3 Units